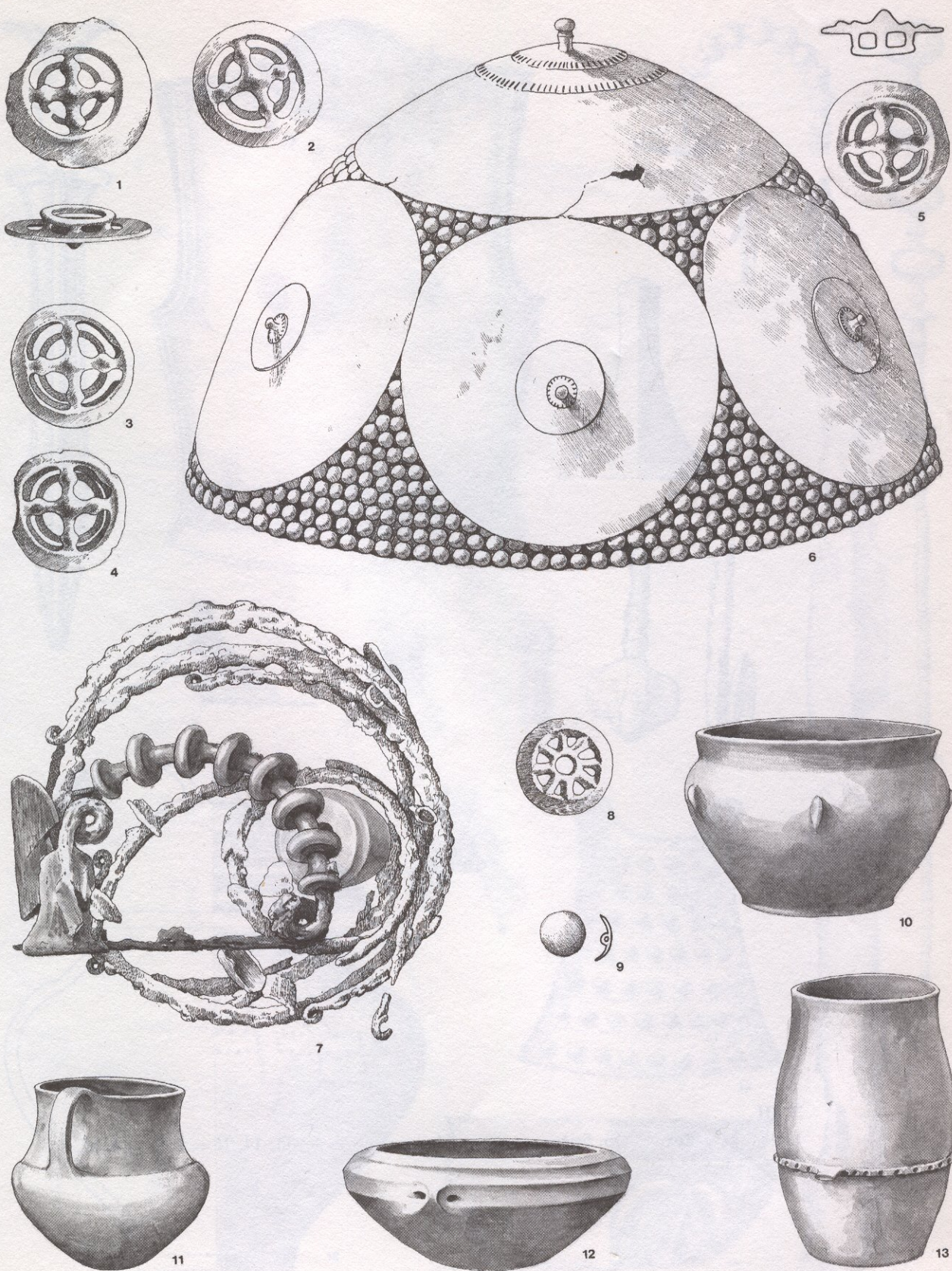


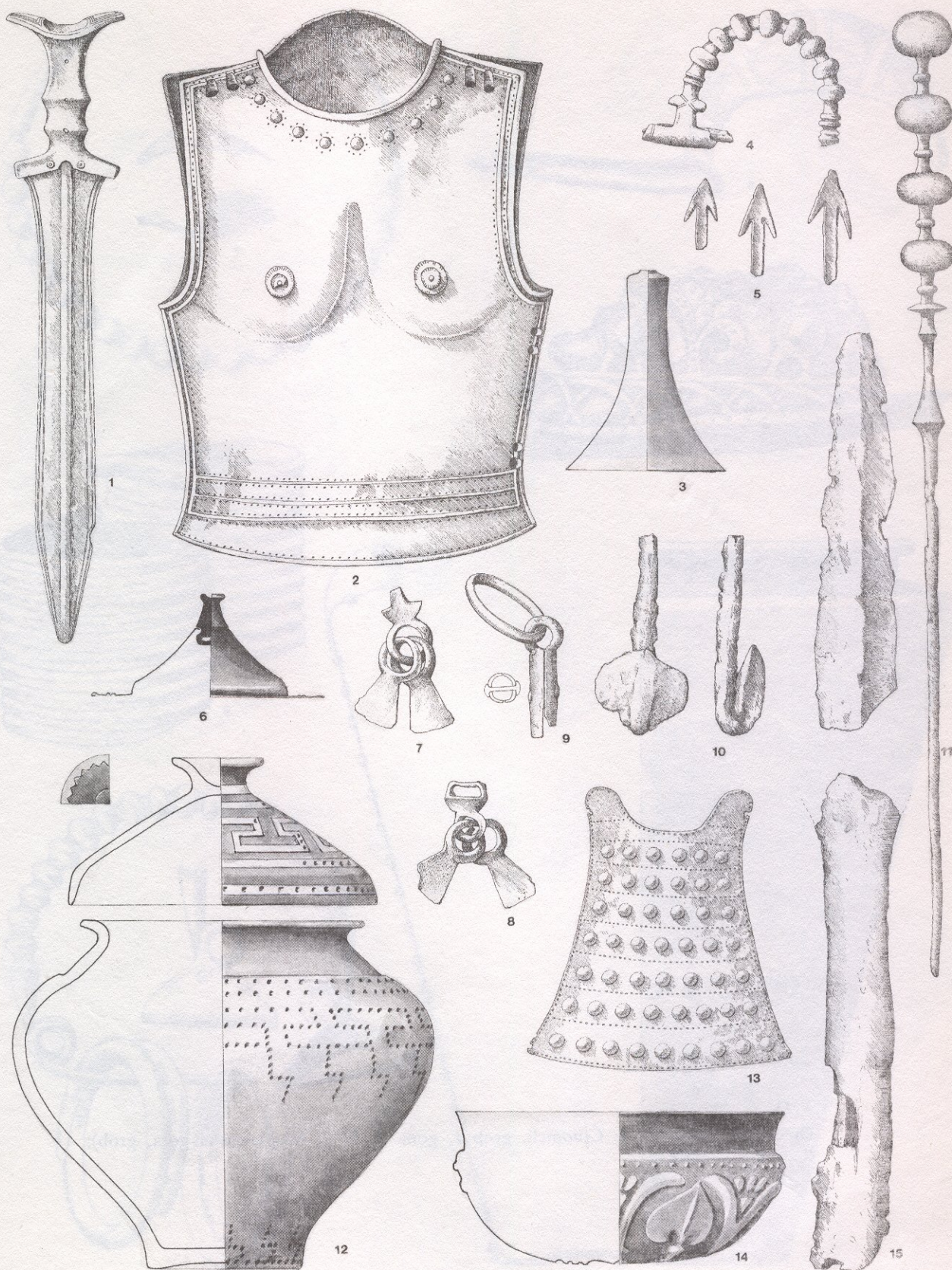
Dolenjska grupa (1—3: Podzemelj, grob s antenskim mačem; 4—6: Ljubljana—SAZU, grob 175; 7—10: Črnomelj—Sadež, grob); R — 1, 3, 4, 6, 8, 9 = 1:2; 2, 5, 7, 10 = 1:4





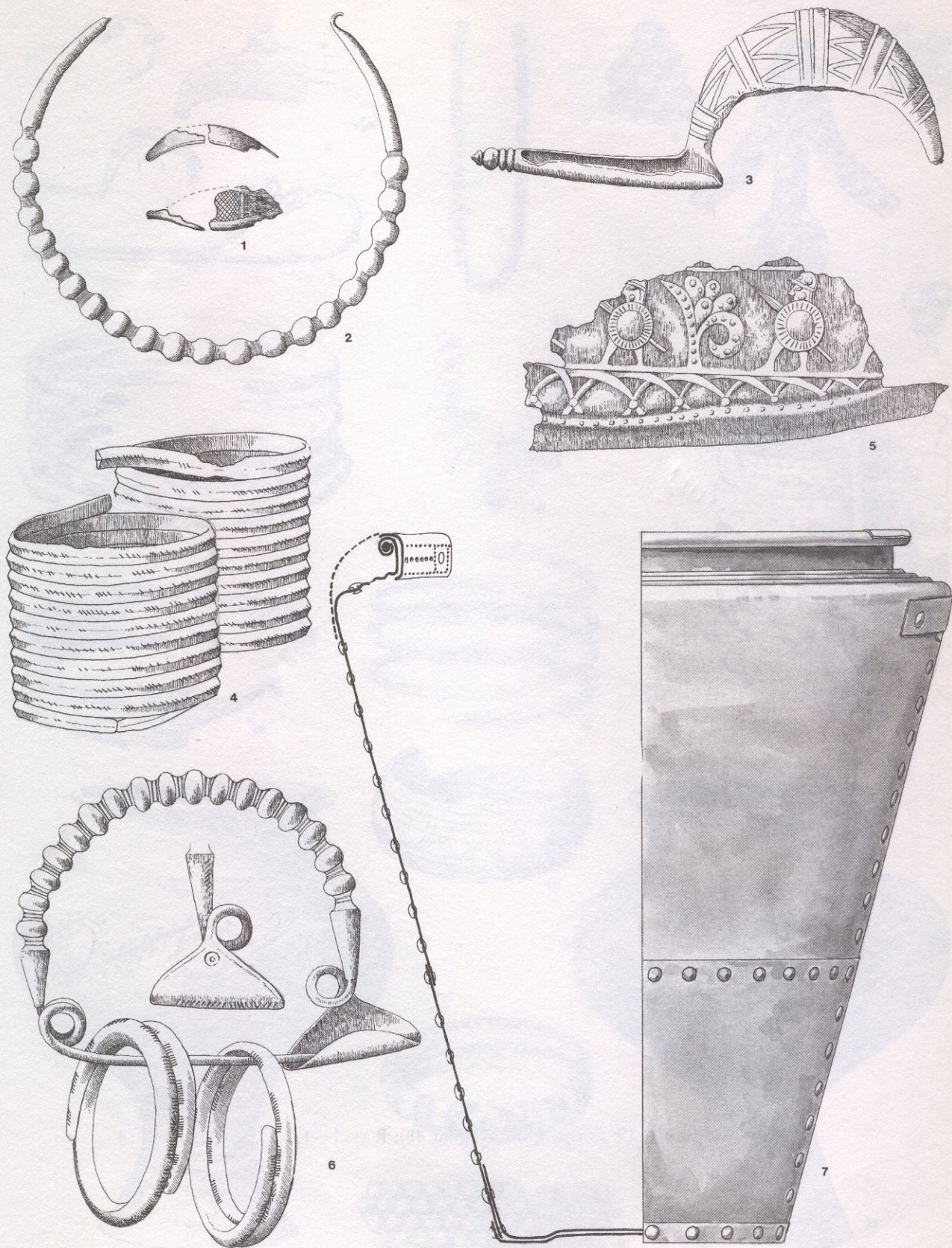
Dolenjska grupa (1—6: Šmarjeta, grob; 7—13: Ljubljana—SAZU, grob 223); R —  
1—9 = 1:2; 10—12 = 1:4; 13 = 1:8





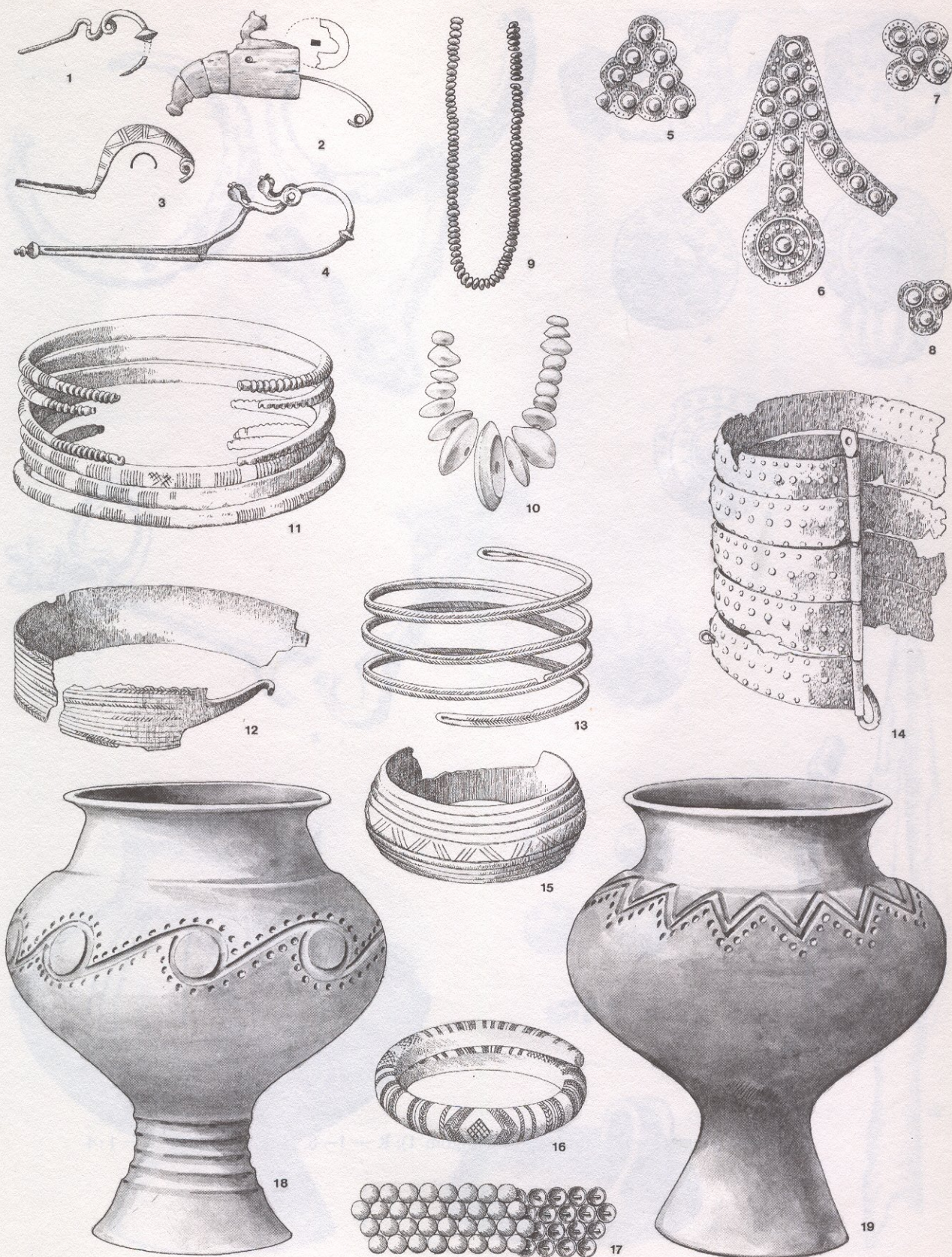
Dolenjska grupa (1—15: Stična, grob sa oklopom); R — 4—11, 14, 15 = 1:2; 1, 3, 12, 13 = 1:4; 2 = 1:6





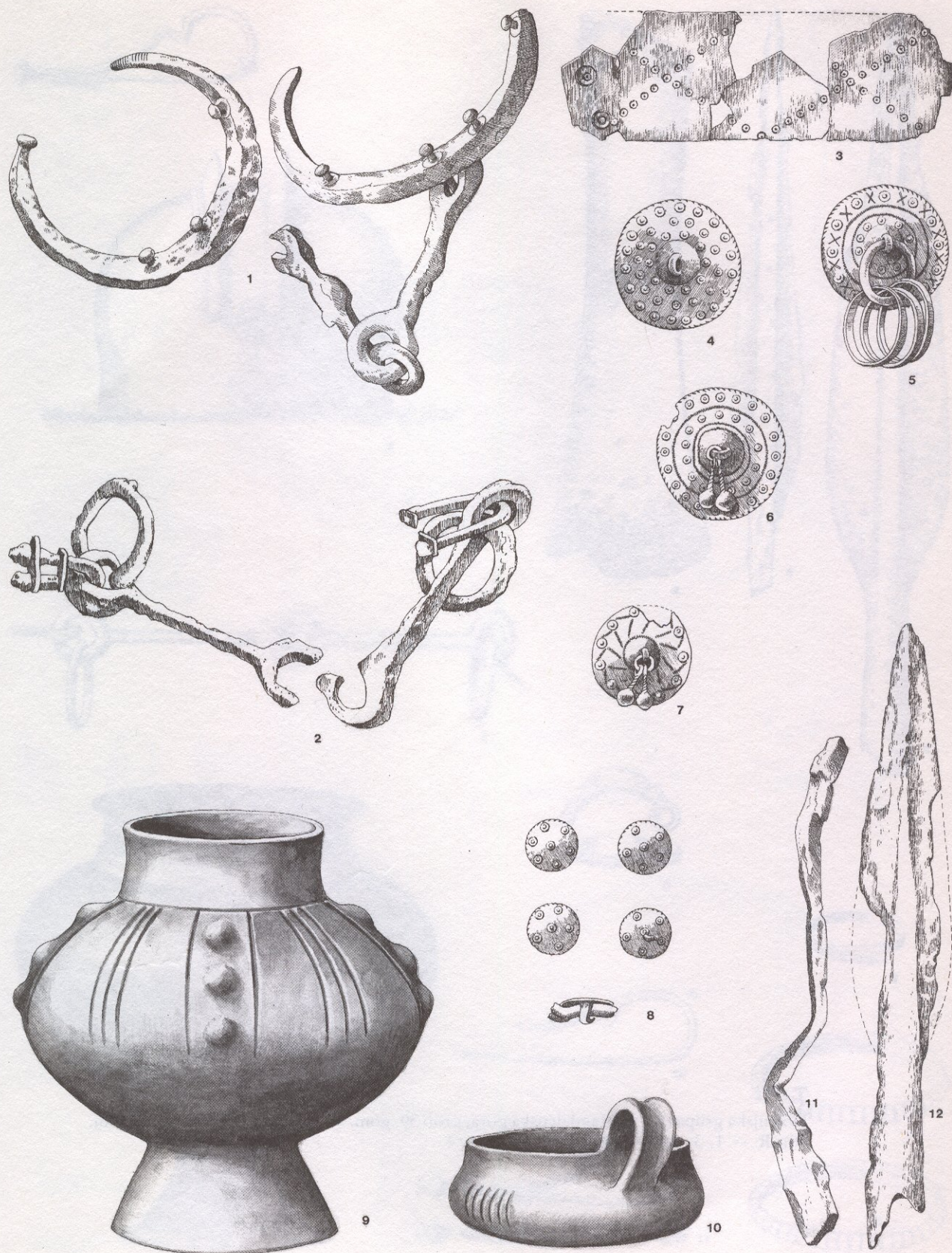
Dolenjska grupa (1—4: Črnomelj, grob 1, gom. 4; 5—7: Magdalenska gora, grob);  
R — 1—7 = 1:2





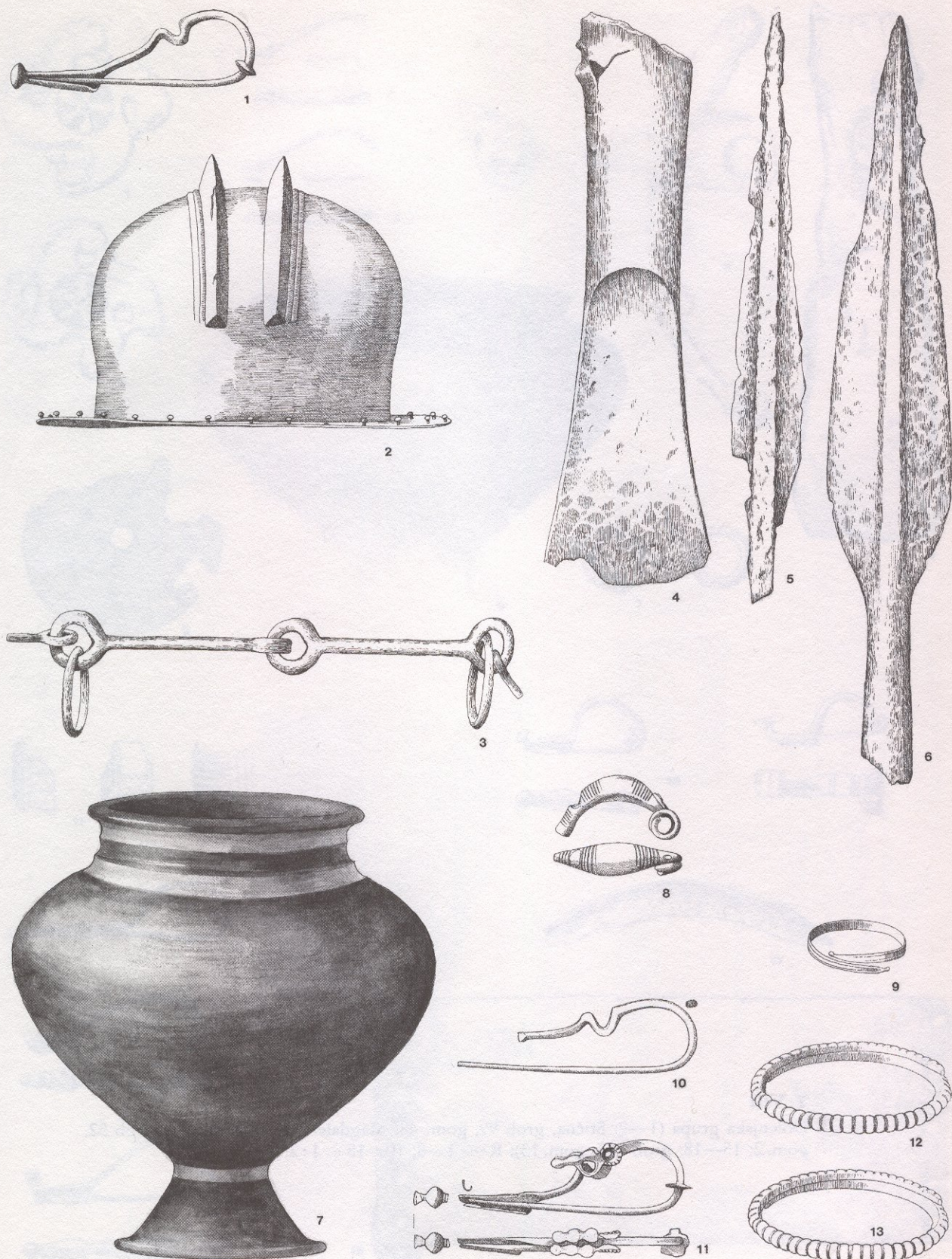
Dolenjska grupa (1—19: Stična, grob 27, gom. 48); R — 1—17 = 1:2; 18, 19 = 1:4





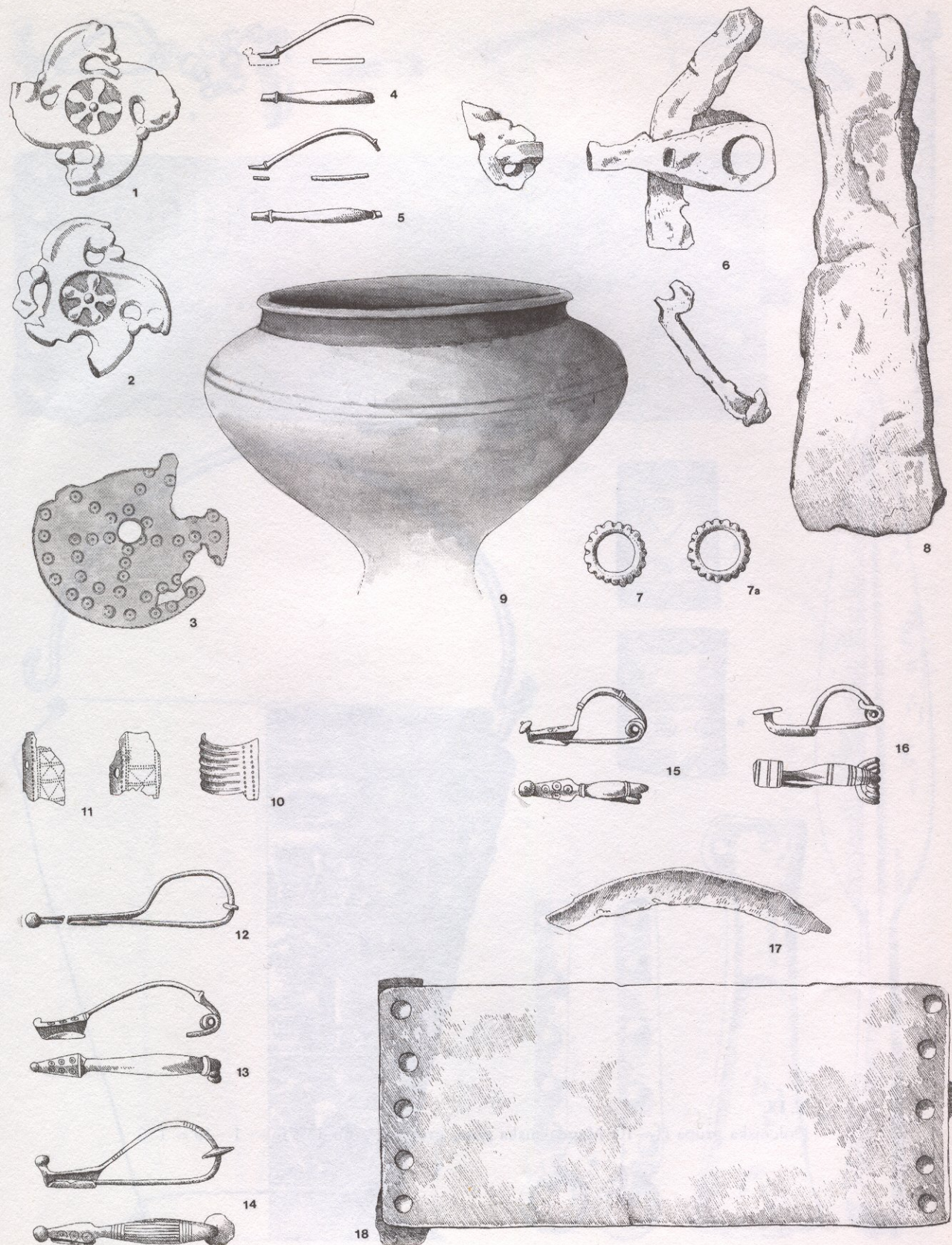
Dolnjska grupa (1—12: Libna, Špilerjeva gom. 1); R — 1—8, 11, 12 = 1:2; 9, 10 = 1:4





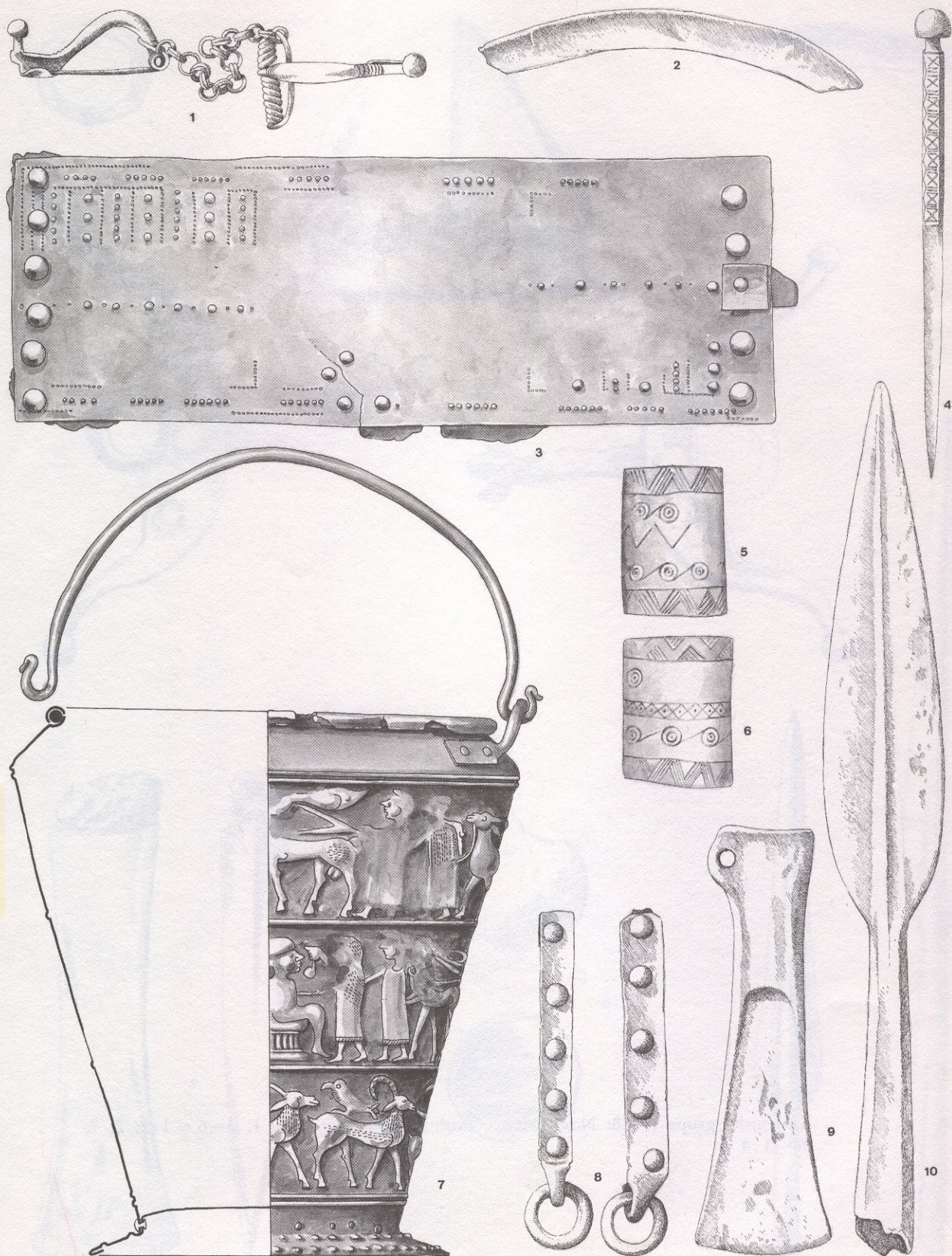
Dolenjska grupa (1—6: Magdalenska gora, grob 39, gom. 7; 7—13; Stična, grob 136, gom. 48); R — 1, 3—6, 8—13 = 1:2; 2, 7 = 1:4





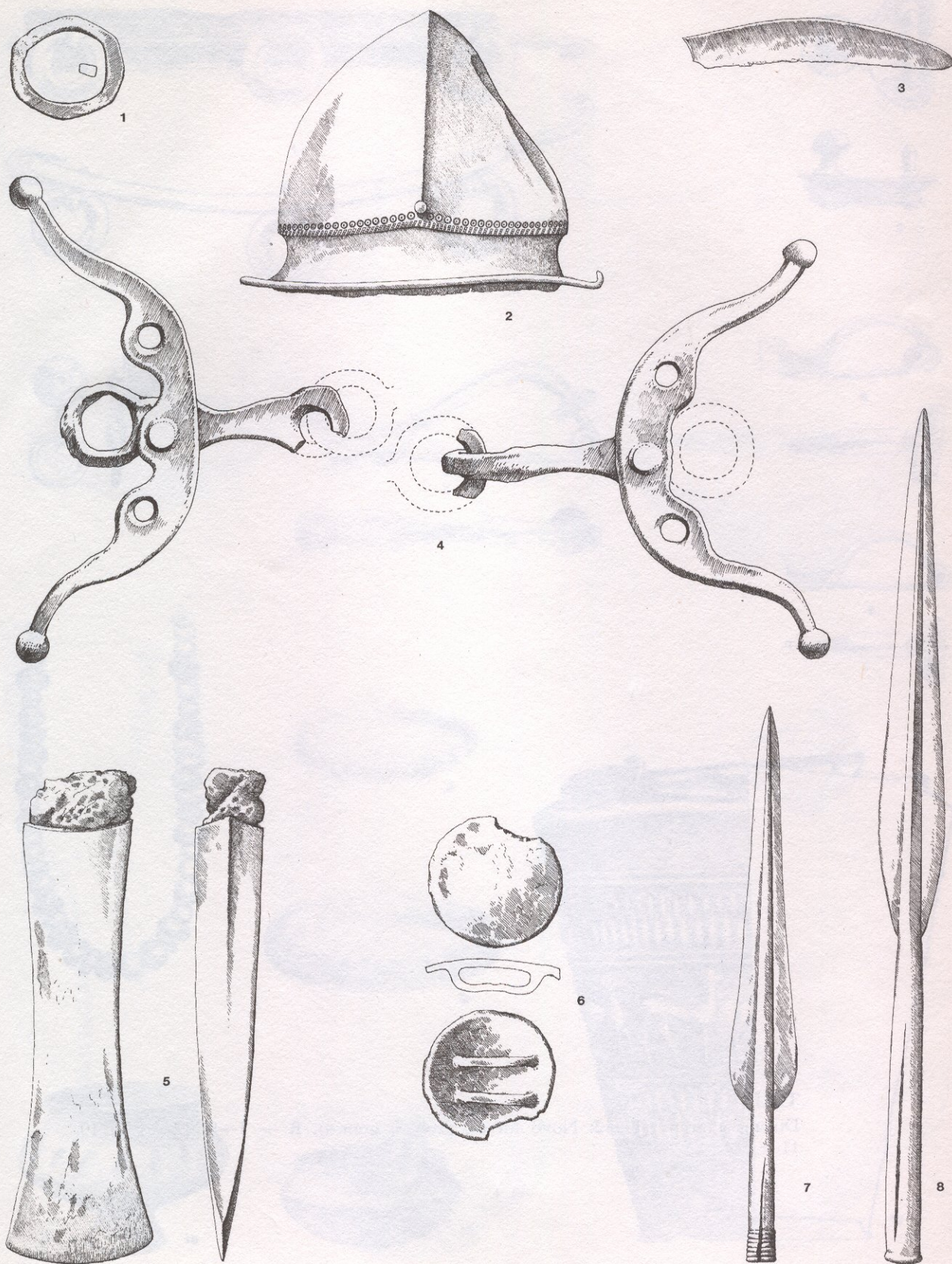
Dolenjska grupa (1—9: Stična, grob 99, gom. 48; Magdalenska gora, 10—14: grob 52, gom. 2; 15—18: grob 153, gom. 13); R — 1—8, 10—18 = 1 : 2; 9 = 1 : 4





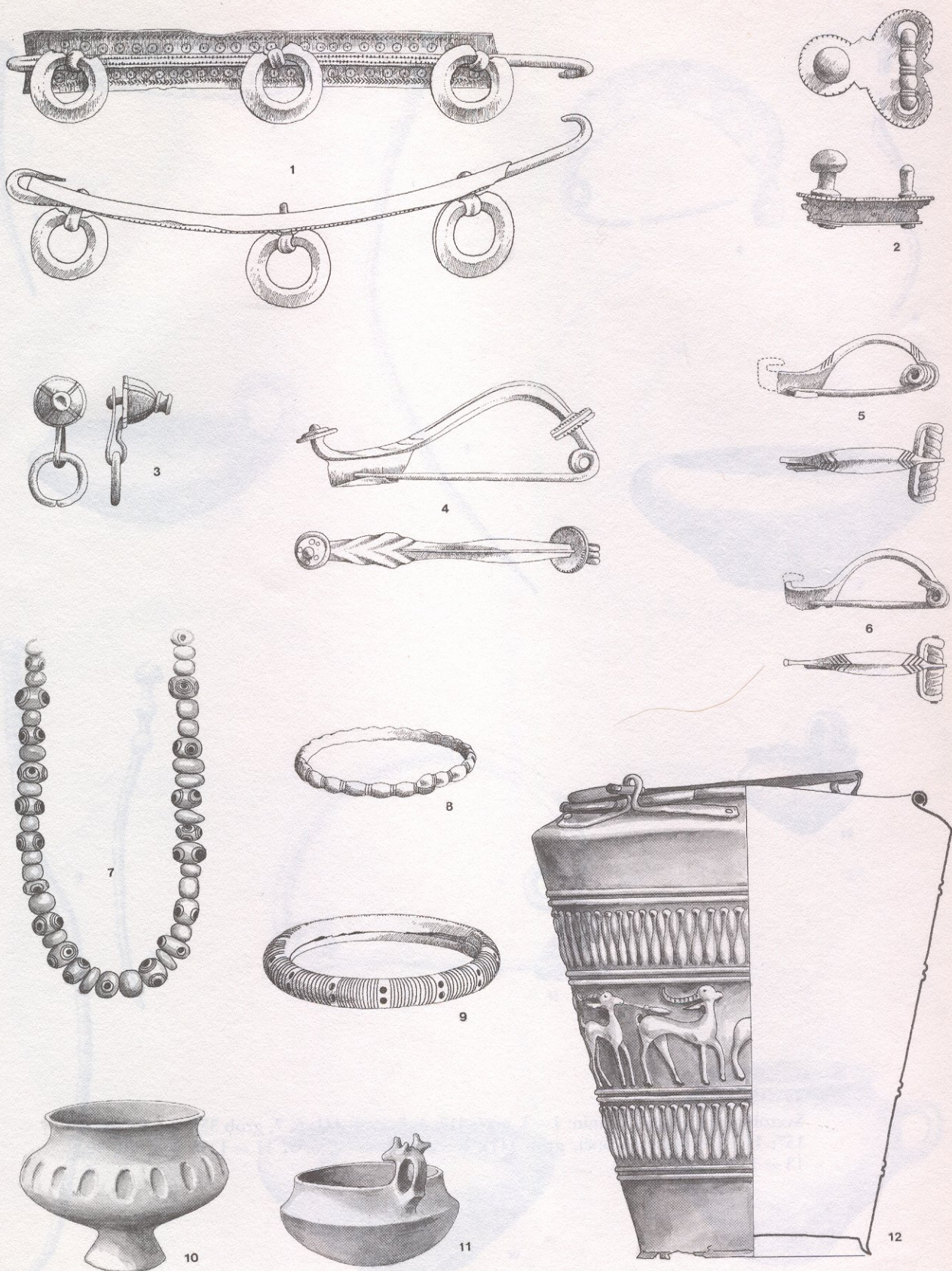
Dolnjska grupa (1—10: Magdalenska gora, grob 55, gom. 13); R — 1—10 = 1:2





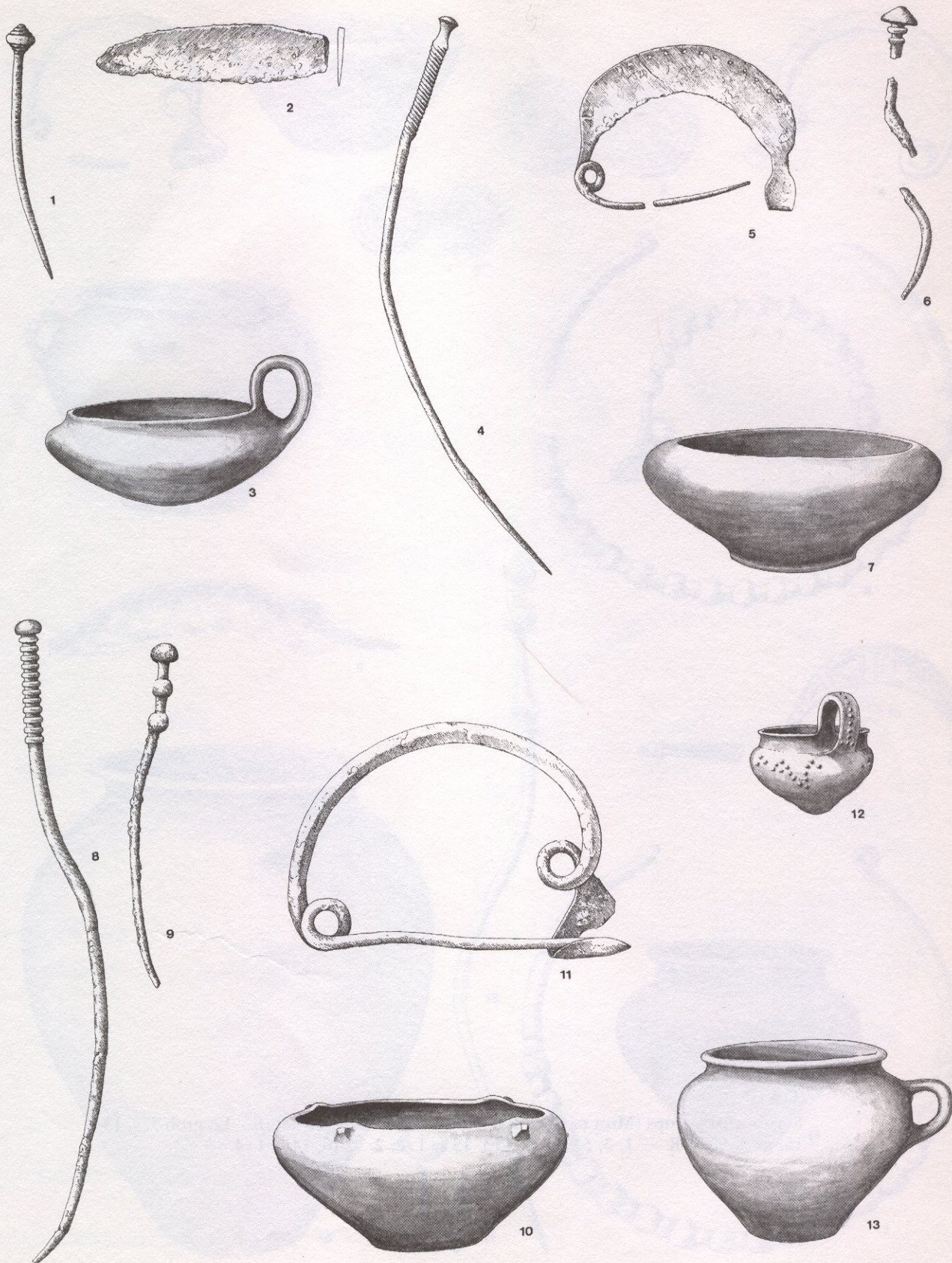
Dolenjska grupa (1—8: Novo Mesto, grob 3, gom. 4); R — 1, 3—6 = 1:2; 2, 7, 8 = 1:4





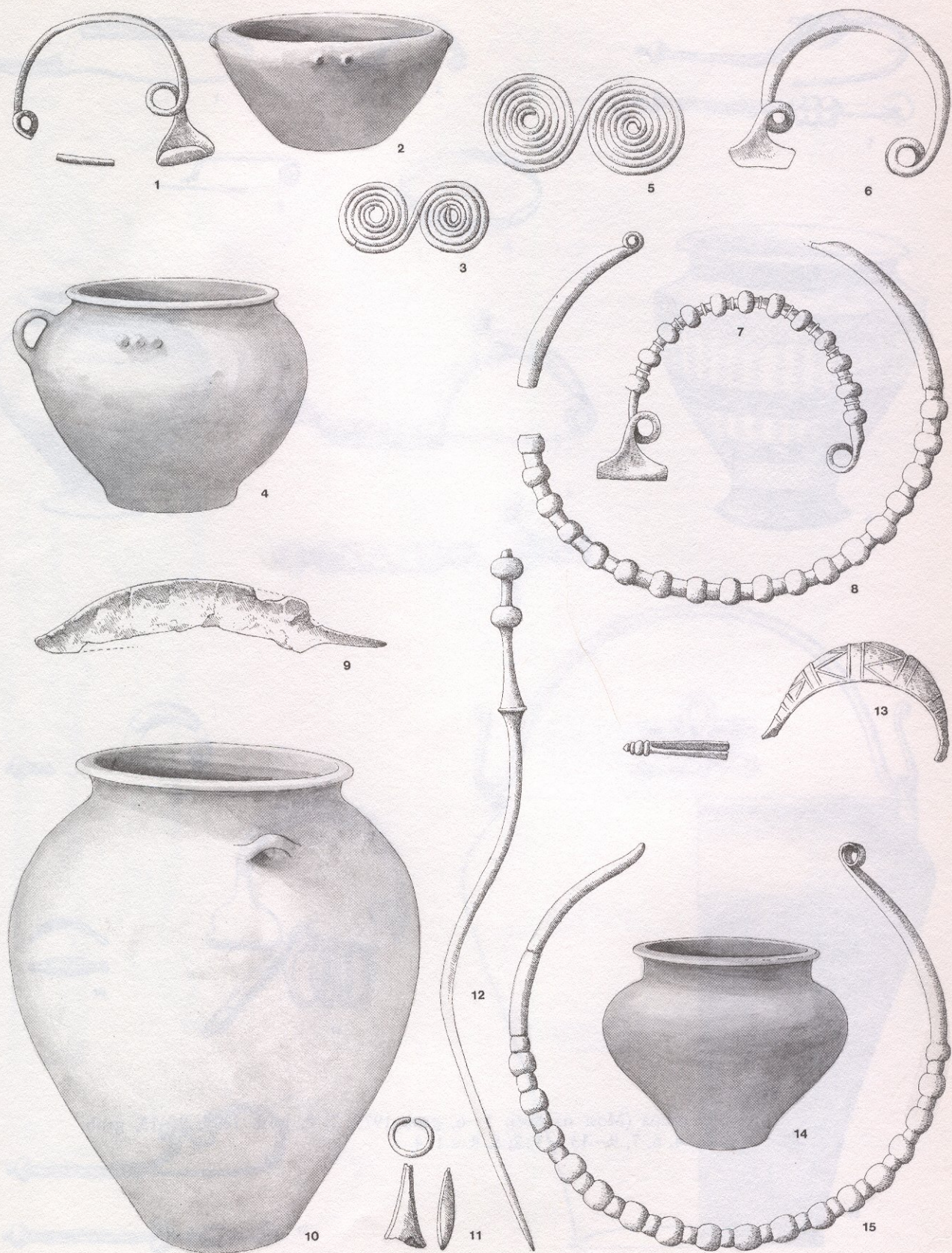
Dolnjska grupa (1—12: Novo Mesto, grob 3, gom.4); R — 1—9, 12 = 1:2; 10, 11 = 1:4





Svetolucijska grupa (Tolmin: 1—3, grob 417; 4, 5, grob 441; 6, 7, grob 351; 8—10, grob 157; 11—13: Most na Soči, grob 111); R — 1, 2, 4—6, 8, 9, 11 = 1:2; 3, 7, 10, 12, 13 = 1:4





Svetolucijska grupa (Most na Soči: 1—4, grob 782; 5—8, grob 480; 9—12, grob 775, 13—15, grob 957); R — 1, 3, 5—9, 11—13, 15 = 1:2; 2, 4, 10, 14 = 1:4





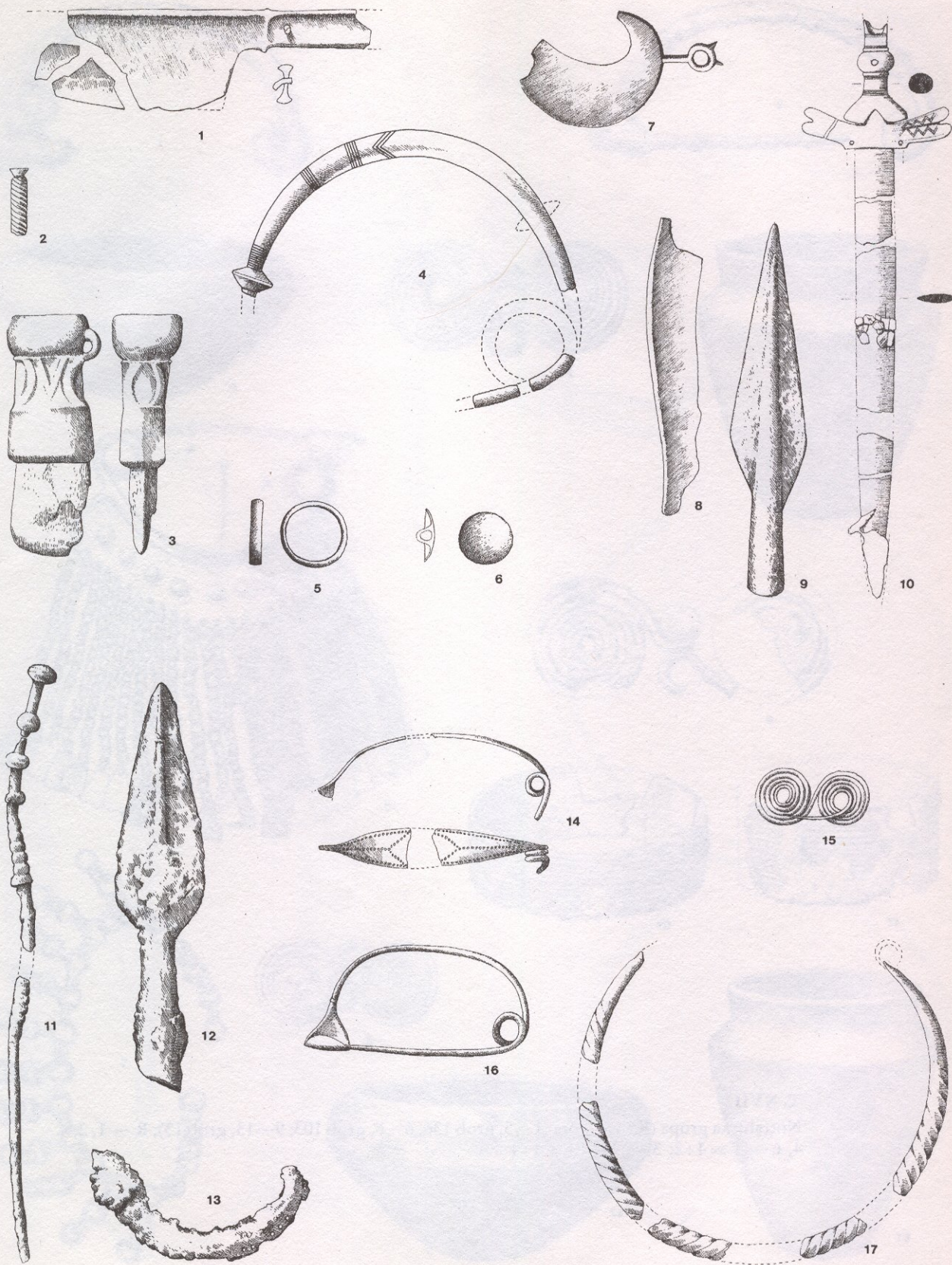
Svetoiucijska grupa (Most na Soči: 1—6, grob 1975; 7, 8, grob 1837; 9—13, grob 682); R — 1—4, 6, 7, 9—13 = 1:2; 5, 8 = 1:4





Svetolucijska grupa (Most na Soči: 1—5, grob 1008; 6, 8, grob 306; 7 iz groba 45; 9—12, grob 1309); R — 1, 2, 6—12 = 1:2; 3, 4 = 1:4; 5 = 1:6





Notranjska grupa (Škocjan—Brežec: 1—3, grob 158; 4—6, grob 116; 7—10, grob 136; 14—17, grob 49; 11—13: Križna gora, grob 11); R — 1—17 = 1 : 2





Notranjska grupa (Križna gora: 1—5, grob 136; 6—8, grob 103; 9—13, grob 13); R — 1, 2, 4, 6—11 = 1:2; 3, 5, 12, 13 = 1:4





Notranjska grupa (Križna gora: 1—2, grob 32; 3—4, grob 95; Šmihel pod Nanosom: 5—6, grob 144; 7—9, grob 135; 10—12, grob 120); R — 1—6, 9—12 = 1:2; 7, 8 = 1:4





Grupa Martijanec-Kaptol (1—10: Kaptol, tumulus IV, grob 1); R — 1—10 = 1:4





Grupa Martijanec-Kaptol (1—8: Kaptol, tumulus IV, grob 1; 9: Kaptol, tumulus IX, grob 2; 10, 11: Kaptol, tumulus XII, grob 1; 12: Kaptol, tumulus II, grob 2; 13—15: Kaptol, tumulus V, grob 1; 16, 17: Martijanec, tumulus, grob); R — 1—9, 12—15, 17 = 1:2; 10, 11, 16 = 1:4





Grupa Martijanec-Kaptol (1—4: Turčišće—Dvorišće, tumulus I, grob 1; 5—7: Goričan, tumulus IV, grob 1; 8—11: Goričan, tumulus XII, grob 1); R — 2—4, 6, 7, 9, 10 = 1 : 2; 1, 5, 8, 11 = 1 : 4



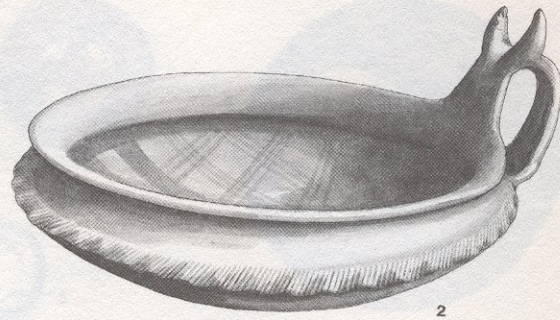


Grupa Martijanec-Kaptol (1—7: Goričan, tumulus VI, grob 1; 8: Goričan, tumulus 1, oštećen grob); R — 5—7 = 1:2; 1—4, 8 = 1:4

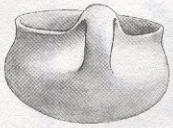




1



2



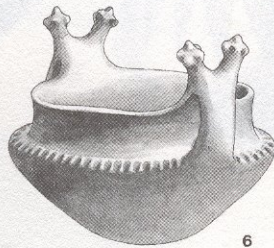
3



4



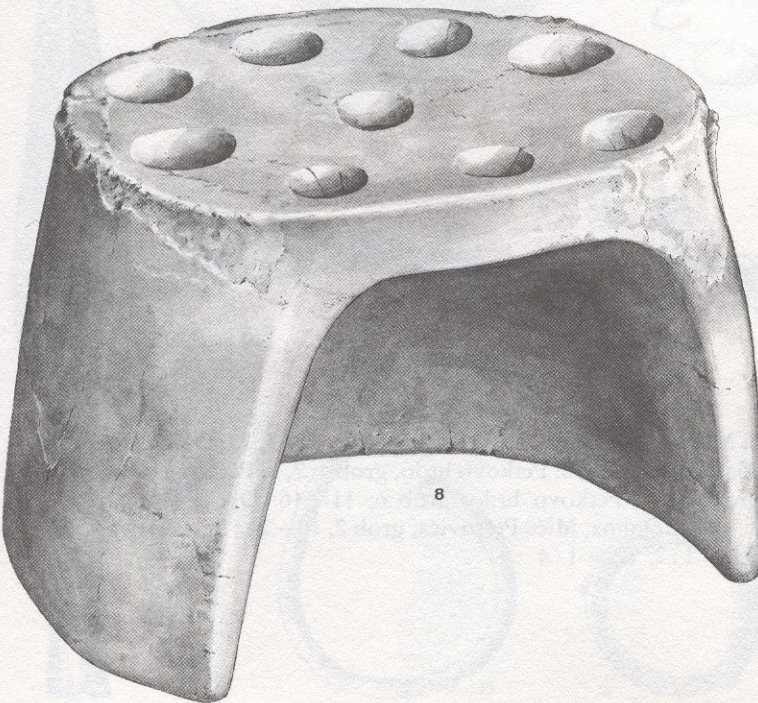
5



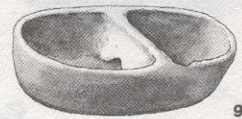
6



7



8



9



10





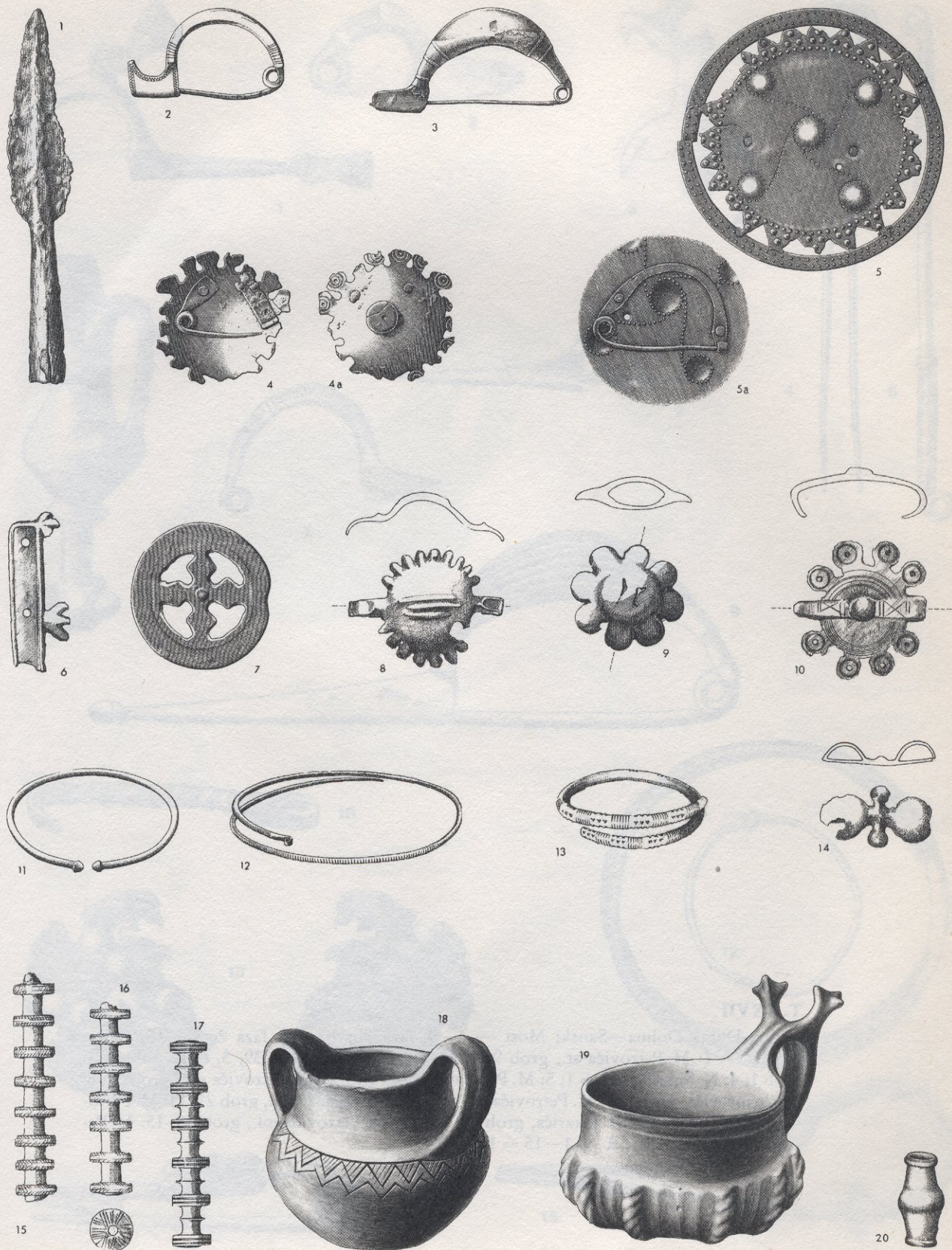
Grupa Donja Dolina—Sanski Most — 1—10: faza 1; 11—21: faza 2a (1—3, 18: Donja Dolina, iz razorenih grobova; 4, 5: Bajinci, grob; 6: Petkovo brdo, grob 4; 7, 8: Petkovo brdo, grob 1; 9: Petkovo brdo, grob 9; 10: Petkovo brdo, grob 6; 11—16: Donja Dolina, M. Petrovića ml., grob 46; 17: Donja Dolina, Miće Petrovića, grob 2; 19—21: St. Jakarića, grob 14); R — 1—11, 13—21 = 1:2; 12 = 1:4





Grupa Donja Dolina—Sanski Most — 1—7: faza 2a; 8—19: faza 2b (1—4: Donja Dolina, St. Čagrlje, grob 3b; 5: Donja Dolina, iz razorenih grobova; 6: Donja Dolina, Miće Petrovića, grob 2; 7: Donja Dolina, St. Jakarića, grob 15; 8—13: Sanski Most, grob 3; 14, 15: Donja Dolina, Miće Petrovića, grob 3; 16: Donja Dolina, M. Petrovića ml., grob 3; 17—19: Sanski Most, grob 99); R — 1—19 = 1:2





Grupa Donja Dolina—Sanski Most — 1—19: faza 2b (1, 7: Donja Dolina, M. Petrovića st., grob 9; 2, 9, 10: Donja Dolina, N. Šokića I, grob 1; 3: Donja Dolina, iz razorenih grobova; 4, 5, 15, 16: Donja Dolina, Miće Petrovića, grob 3; 6, 13, 14, 17: Donja Dolina, I. Stipančevića, grob 8; 8, 12: Donja Dolina, M. Petrovića st., grob 16; 11: Donja Dolina, Miće Petrovića, grob 5; 18: Sanski Most, iz naselja; 19: Donja Dolina, iz naselja); R — 1—20 = 1 : 2





Grupa Donja Dolina—Sanski Most — 1—9: faza 2b; 10—15: faza 2c (1—15: Donja Dolina — 1: M. Petrovića st., grob 9; 2: M. Petrovića ml., grob 39; 3, 6: N. Šokića II, grob 1; 4: N. Šokića I, grob 1; 5: M. Petrovića st., grob 9; 7: M. Petrovića ml., grob 37; 8: I. Stipančevića, grob 8; 9: M. Petrovića st., grob 16; 10: St. Jakarića, grob 21; 11: M. Petrovića st., grob 30; 12: St. Jakarića, grob 14; 13, 14: M. Petrovića ml., grob 35; 15: M. Petrovića ml., grob 31); R — 1—15 = 1 : 1





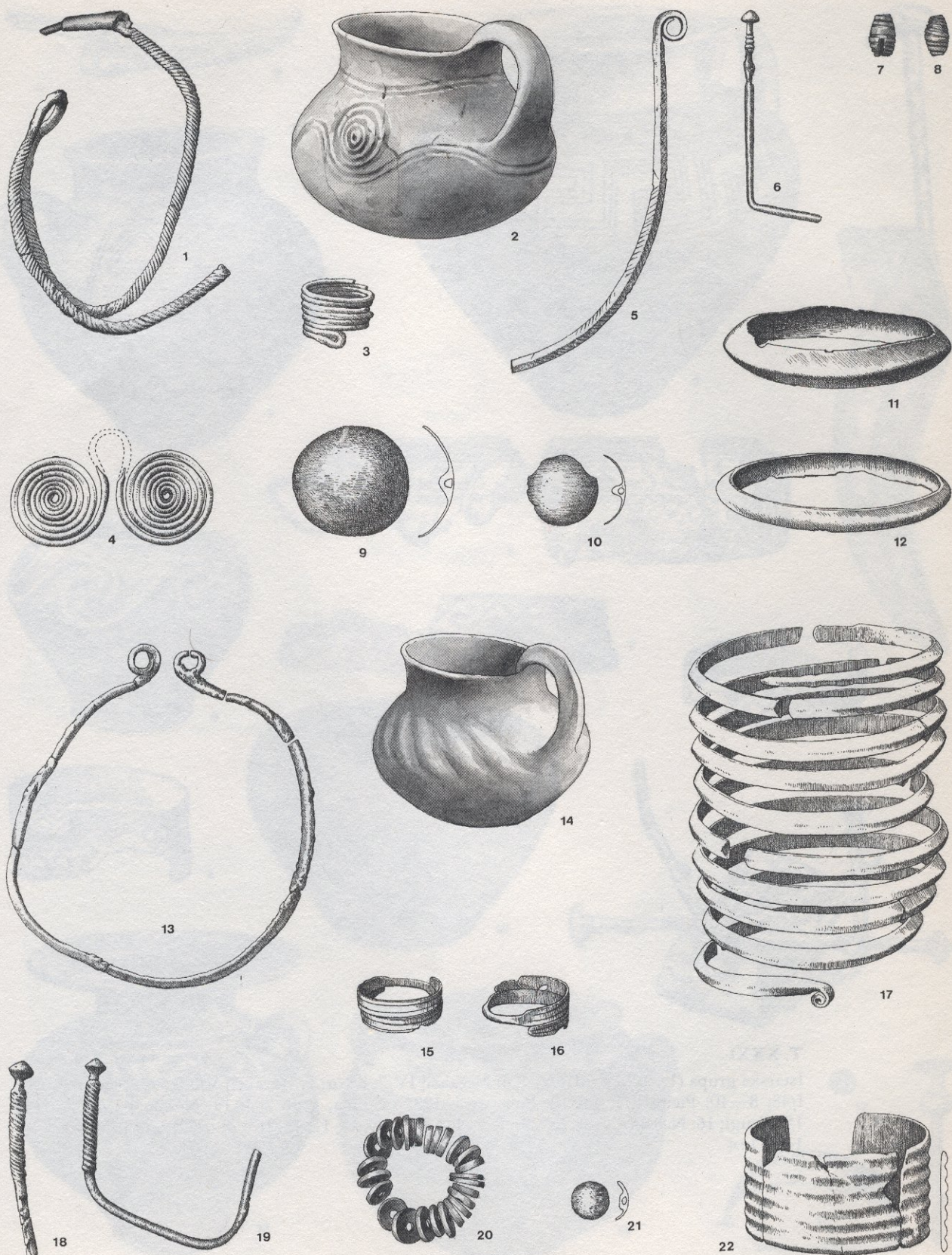
Grupa Donja Dolina—Sanski Most — 1—6: faza 2c; 7, 8: faza 3a—1; 9—26: faza 3a—2 (1—3: Donja Dolina, M. Petrovića ml., grob 35; 4—6: Donja Dolina, I. Stipančevića, grob 16; 7: Sanski Most, grob 36; 8: Sanski Most, grob 80; 9: Sanski Most, grob 55; 10: Sanski Most, grob 14; 11: Sanski Most, grob 76; 12: Sanski Most, grob 17; 13, 16: Sanski Most, grob 127; 14: Sanski Most, grob 114; 15: M. Petrovića st., grob 2; 17: Sanski Most, grob 63; 18: Sanski Most, grob 133; 19: Sanski Most, grob 20; 20: Donja Dolina, N. Šokića I, grob 27; 21: Sanski Most, grob 81; 22, 26: Sanski Most grob 59; 23: Sanski Most, grob 14; 24: Sanski Most, grob 62; 25: Sanski Most, grob 115); R — 1—26 = 1:2





Grupa Donja Dolina—Sanski Most — 1—16, 19—21: faza 3b (1, 2: Donja Dolina, M. Petrovića ml., grob 47; 3: Donja Dolina, M. Petrovića ml., grob 43b; 4: Sanski Most, grob 136; 5: Sanski Most, grob 109; 6, 7: Sanski Most, grob 12; 8, 9, 15: Sanski Most, grob 50; 10: Sanski Most, iz naselja; 11: Sanski Most, grob 15; 12, 20: Sanski Most, grob 53; 13, 19: Sanski Most, grob 2; 14: Donja Dolina, iz razorenih grobova; 16: Donja Dolina, St. Jakarića, grob 10; 17, 18: Donja Dolina, iz slojeva naselja; 21: Sanski Most, grob 161); R — 1—21 = 1 : 1





Istarska grupa (1—4: Nezakcij, grob V/27, izbor; 5: Nezakcij, nepoznat grob; 6: Limska gradina, grob 19; 7, 8: Limska gradina, grob 60; 9—12: Limska gradina, grob 58, izbor; 13—17: Limska gradina, grob 59, izbor; 18, 19: Nezakcij, V/25, izbor; 20, 21: Nezakcij I/12; 22: Limska gradina, grob 15); R — 1, 3—13, 15—22 = 1 : 2; 2, 14 = 1 : 4





Istarska grupa (1, 2: Picugi II/92; 3, 4: Nezakcij IV/2, izbor; 5: Nezakcij V/35; 6, 7: Picugi I/48; 8—10: Picugi I/1; 11, 12: Pula, grob 125; 13: Pula, grob 204; 14: Nezakcij IV/1; 15: Picugi; 16: Nezakcij grob 22, 23); R — 1, 4, 5, 7—9, 11, 12, 15, 16 = 1:2; 2, 3, 6, 10, 13, 14 = 1:4





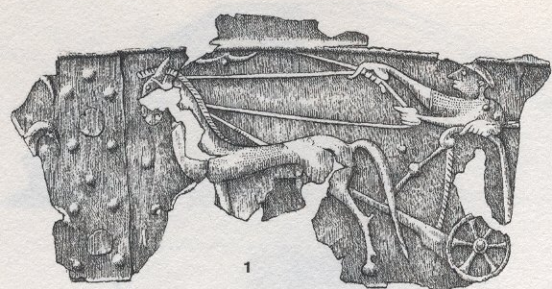
Istarska grupa (1: Nezakcij I/4; 2: Nezakcij I/13; 3, 4: Kastel kod Buja, grob 21; 5: Nezakcij; 6: Picugi II/19, izbor; 7: Picugi II/20, izbor; 8: Nezakcij V/8, izbor; 9: Nezakcij IV/3; 10: Nezakcij I/10, izbor; 11: Nezakcij I (15—17), nema grobova); R — 2, 5, 7, 8, 10 = 1:2; 1, 3, 4, 6, 9, 11 = 1:4





Istarska grupa (1: Nezakcij V/8, izbor; 2: Nezakcij I/4, izbor; 3, 4: Nezakcij I/12 izbor; 5, 6: Nezakcij I/10, izbor; 7: Nezakcij, nepoznat grob; 8: Picugi I/14; 9: Picugi, nepoznat grob; 10: Picugi, nepoznat grob; 11: Nezakcij I/5, izbor; 12: Picugi I/11, izbor; 13: Nezakcij IV/1); R — 3—10 = 1:2; 1, 2, 11—13 = 1:4





1



3



4



2



5



7



8



6



9



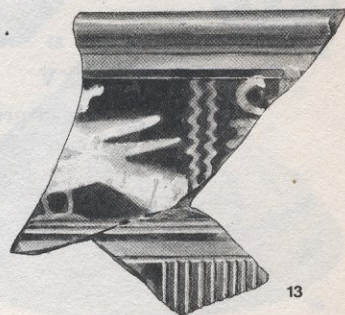
10



11



12



13

Istarska grupa (1—4: Nezakcij I/12, izbor; 5, 6: Picugi; 7—13: Nezakcij, sloj ispod limskog hrama B); R — 1, 5—10, 12, 13 = 1:2; 2—4, 11 = 1:4





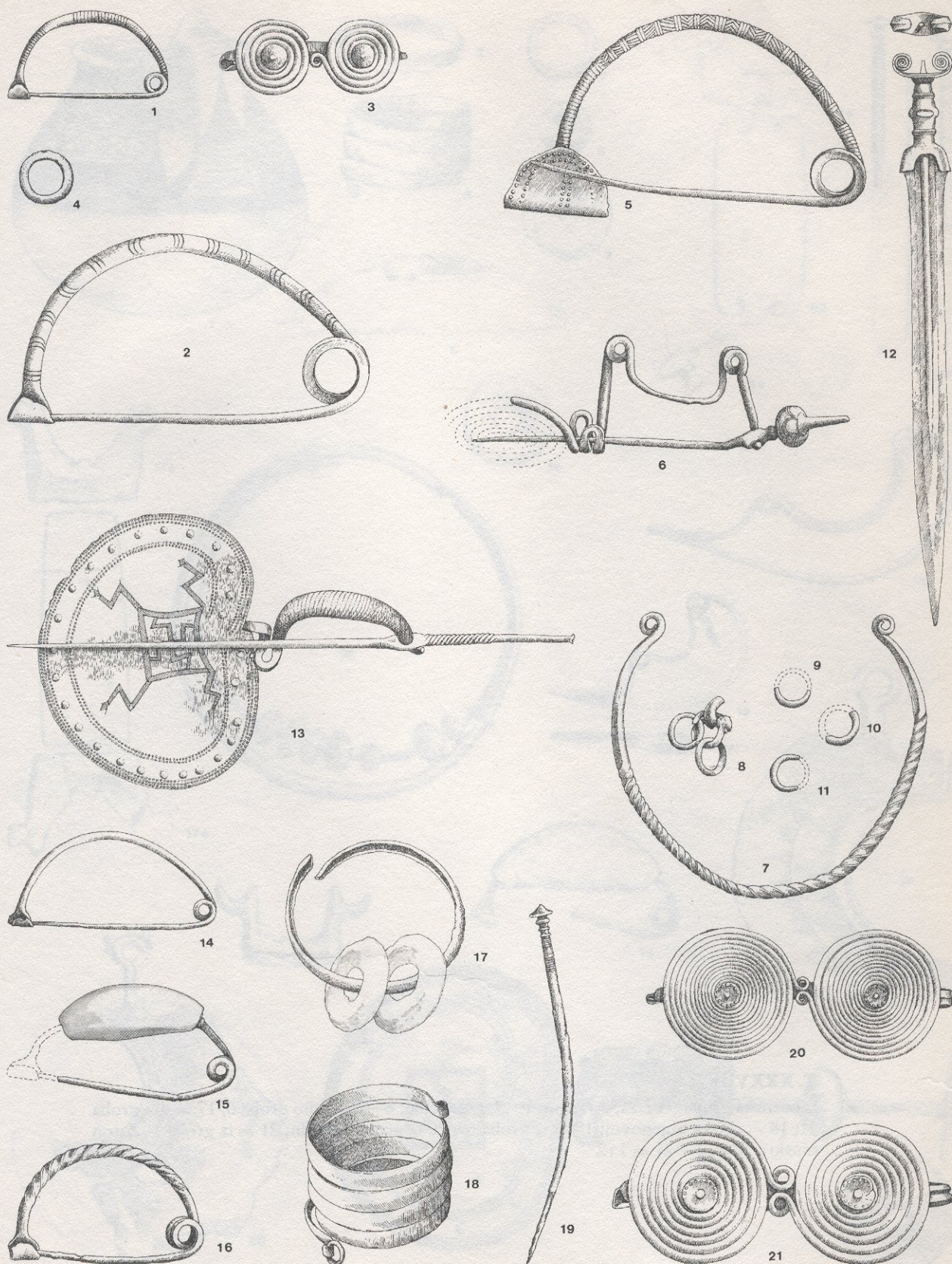
Liburnska grupa (1—3, 6—8, 12, 14, 15: Nin, 1—3 dječiji grobovi; 4, 10, 11, 13, 16: Radovin; 5: iz groba u Nadinu; 9: iz groba u Ljupču); R — 5, 7—11, 15, 16 = 1:2; 1, 4, 6, 12—14 = 1:4; 2, 3 = 1:8





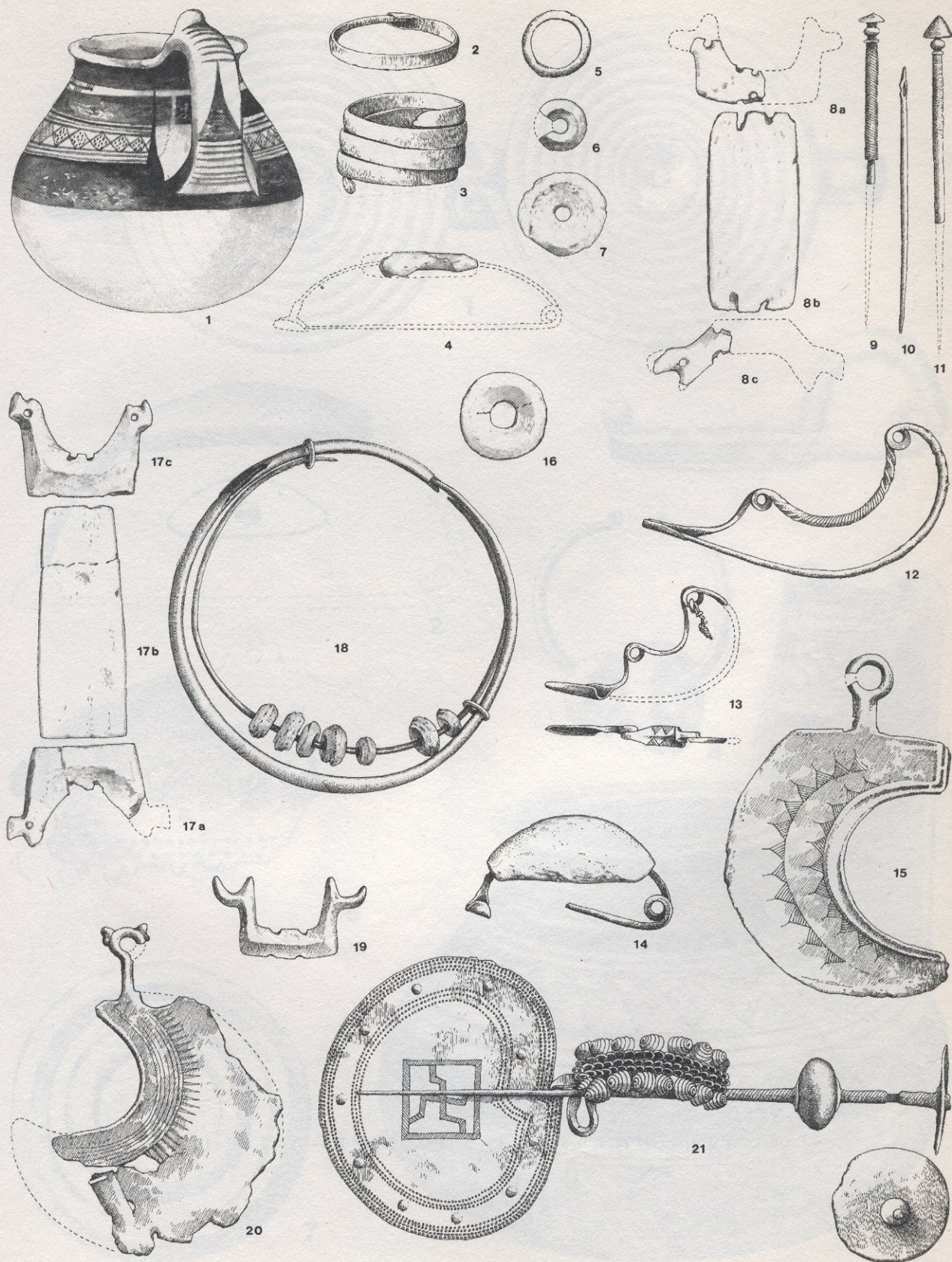
Liburnska grupa (1, 4—6: Nin, 6 iz groba; 2, 3, 9: Zadar, 7, 8: Radovin); R — 1, 4—7 = 1:2; 2, 3, 8, 9 = 1:4





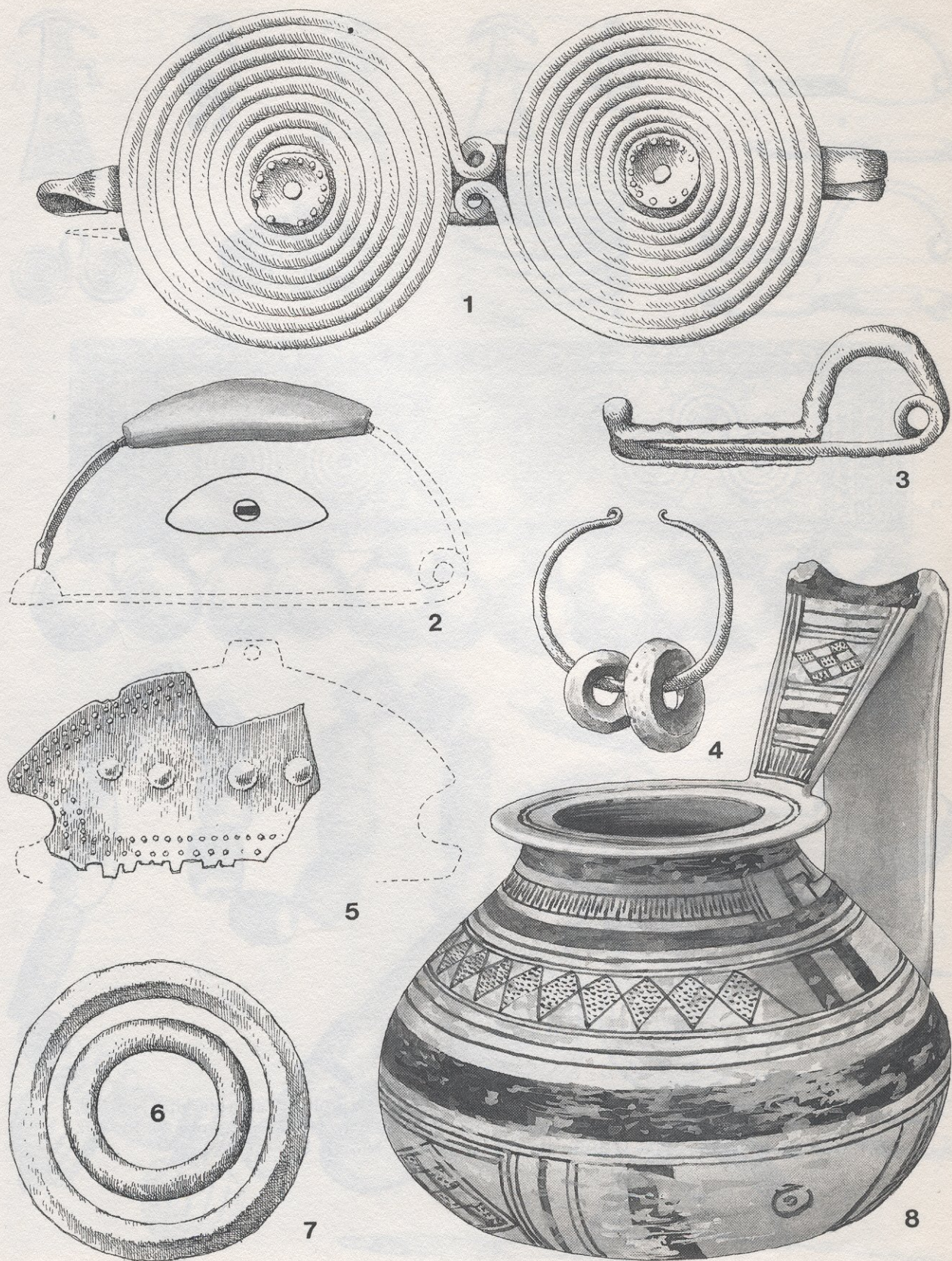
Liburnska grupa (I faza, 9. st.; 1—4 = grob 34; 5—11 = dio groba 7; II faza, 8. st.: 12 = iz groba 90; 13 = iz groba 26; 14—21 = grob 24; Nin); R — 1—11, 13—21 = 1:2; 12 = 1:4





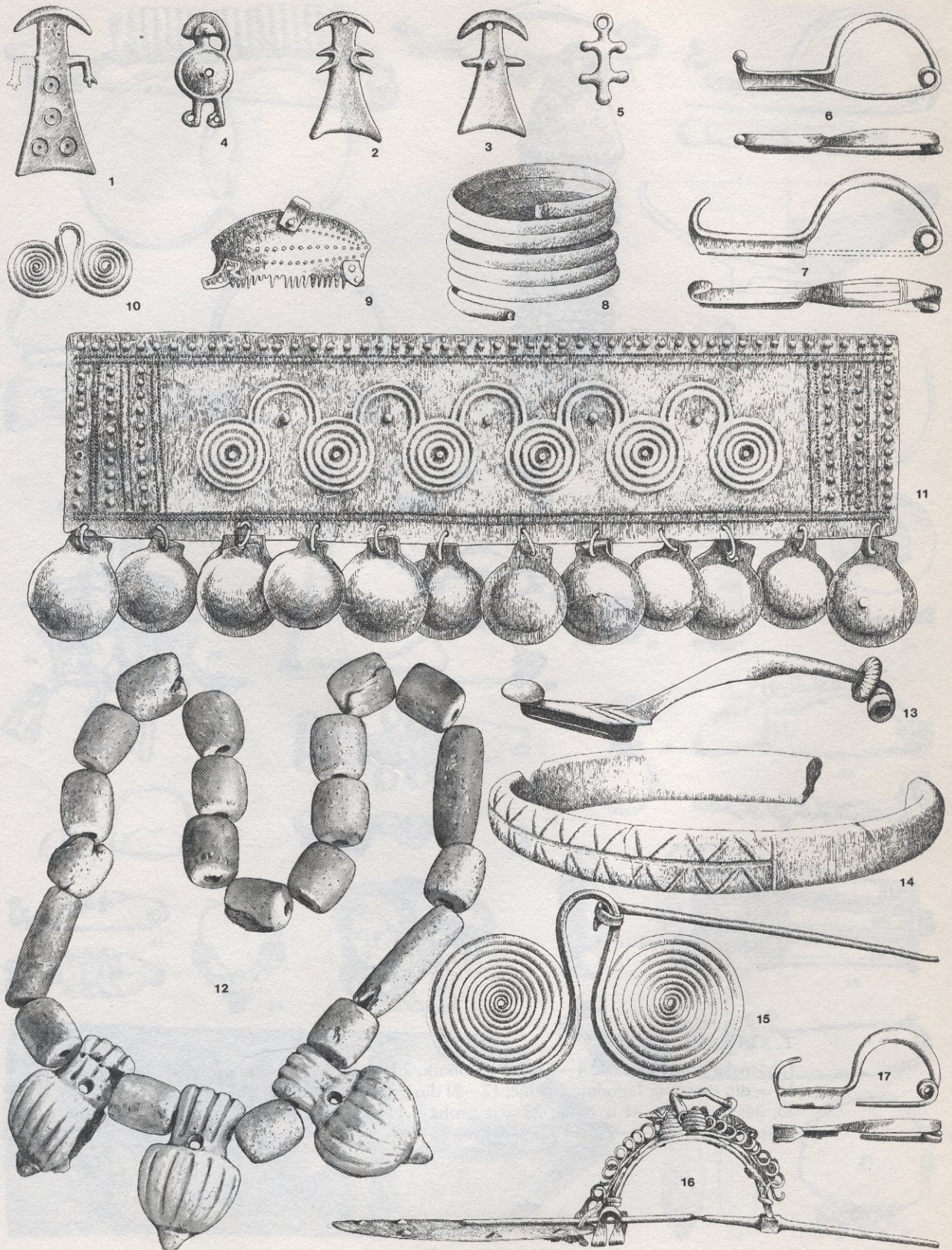
Liburnska grupa (II faza, 8—7. st.: 1—7 = grob 86; 8—16 = dio groba 6; 17 = dio groba 21; 18 = zbirka Snjegovoj; 19 = iz groba 69; 20 iz groba 31: Nin; 21 = iz groba 1: Zaton ninski); R — 1—21 = 1:2





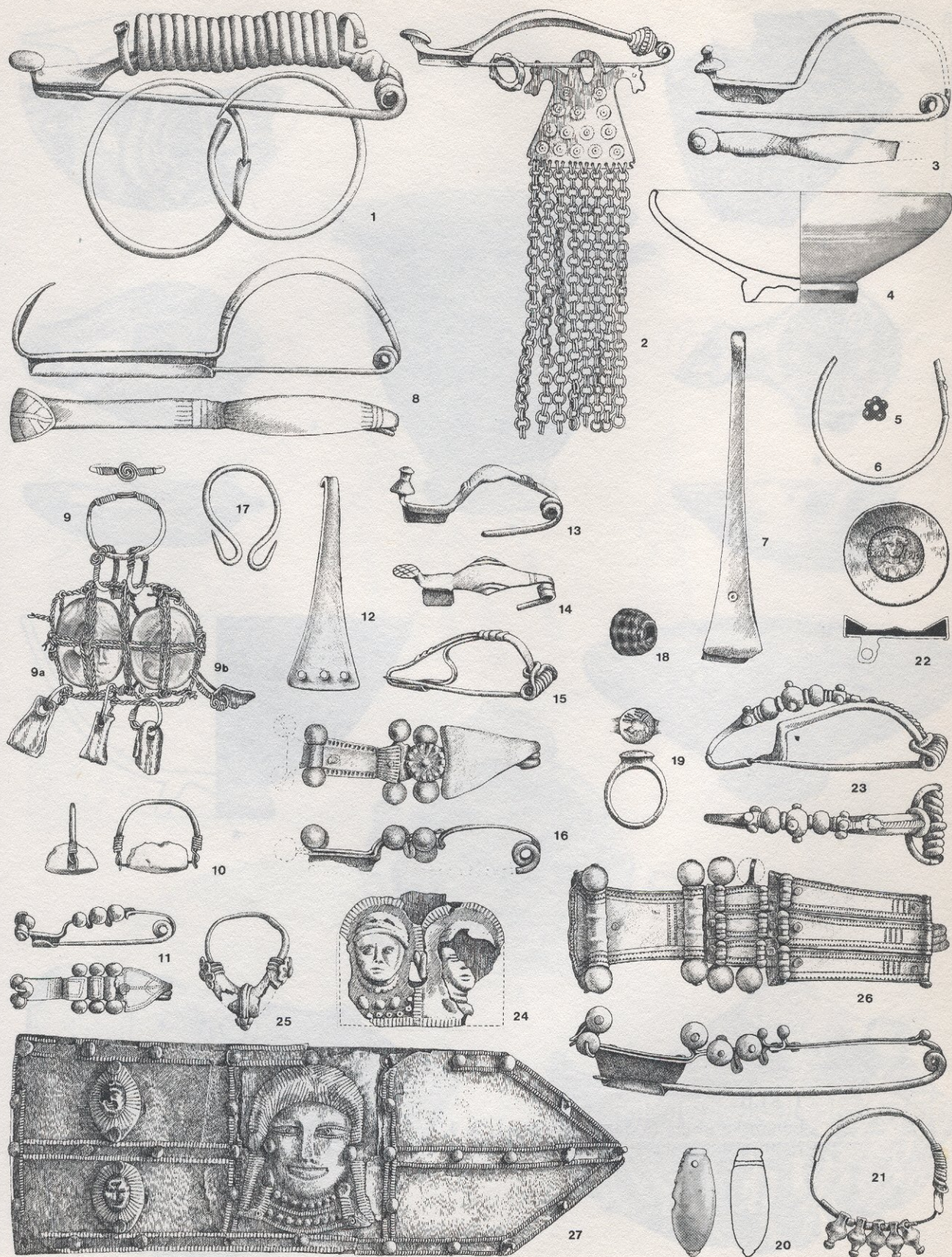
Liburnska grupa (III faza, 6. st.: 1—8 = grob 23: Nin); R — 1—8 = 1:1





Liburnska grupa (III faza, 6. st.: 1 = iz groba 5; 2, 3 = iz groba 3: Zaton ninski; 4: Nin; 5, 8, 9 = iz groba 12; 6, 7, 10: iz groba 3: Nin; IV faza, 5. st.: 11, 12 = iz groba 40; 13 = iz groba 60; 14—16 = iz groba 10; 17 = iz groba 9: Nin); R — 1—17 = 1:2





Liburnska grupa (V faza, 4—1. st.: 1 Grobnik; 2:Kastav; 3—7 = dio groba 37: Nin; 8—11 = dio ostave iz Jagodnje Gornje; 12—21 dio groba 1 iz Nadina; 22 = iz groba u Ninu; 23, 24: dio groba 82 iz Nina; 25 = iz groba u Ljupču, 26, 27 = iz grobova u Lisičiću (Asseria); R — 1, 3—27 = 1:2; 2 = 1:4





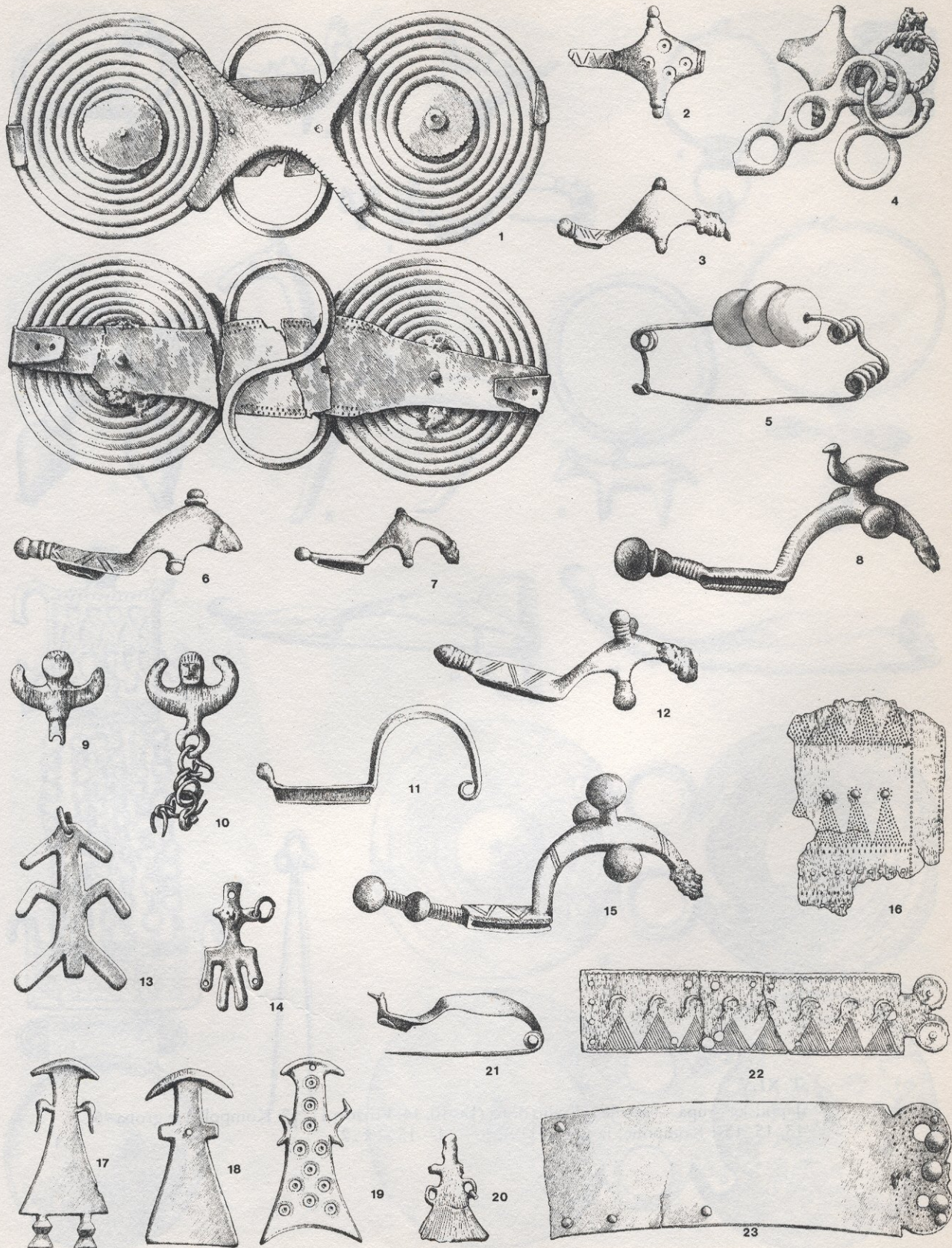
Liburnska grupa (V faza, 4—1 st.: 1, 3, 4, 8, 9: Zadar; 2: Bribir; 5—7 = dio groba 1; 10 = dio groba 2 iz Nadina); R — 1—4, 6—10 = 1:2; 5 = 1:4





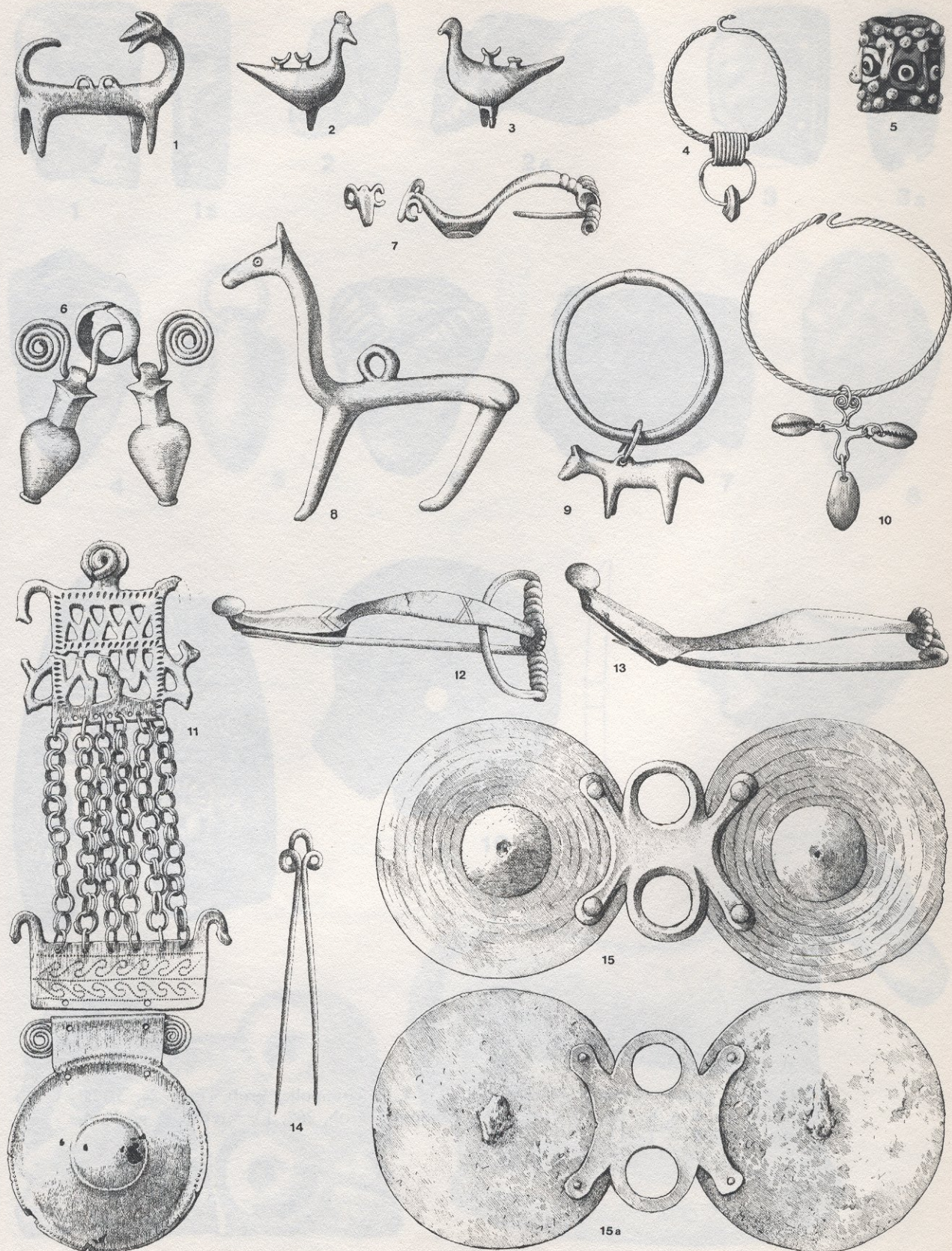
Japodska grupa — starije željezno doba (1, 1a: Prozor; 2: Medak; 3: Vrebac, iz groba 8, tumul IV; 4, 13—15: Prozor; 5, 6: Kompolje, iz groba 238; 7—11: Kompolje, grob 107; 12: Kompolje, iz groba 169; 16: Kompolje, iz groba 312); R — 1—16 = 1:2





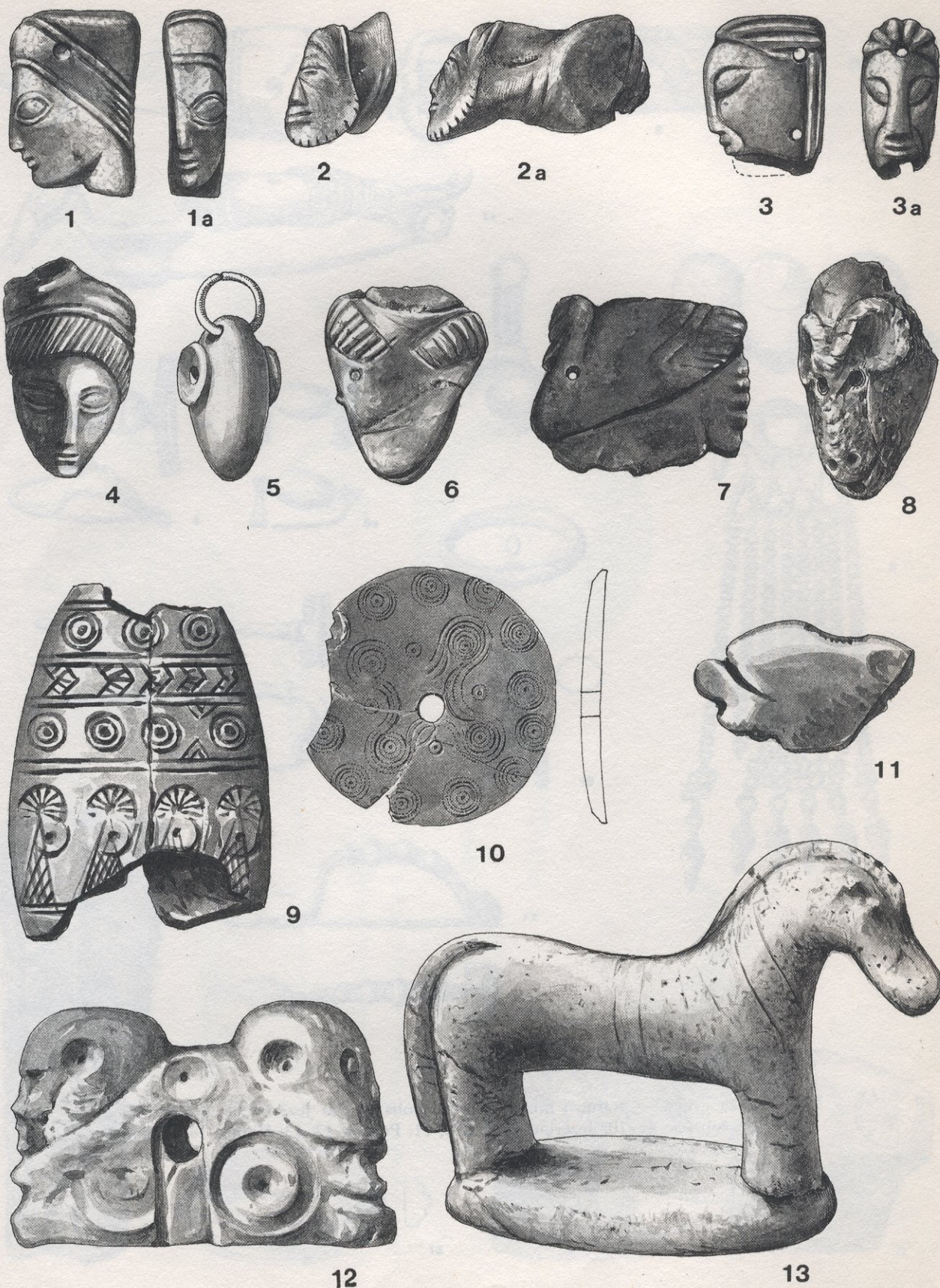
Japodska grupa — starije željezno doba (1—4: Kompolje, iz groba 108; 5, 15: Kompolje, iz groba 160; 6, 7, 11—14, 17—19, 21—23: Prozor; 8: Kompolje, iz groba 36; 9: Kompolje, iz groba 258; 10: Kompolje, iz groba 224; 16: Gornji Budački; 20: Kompolje, iz groba 28); R — 1—23 = 1:2





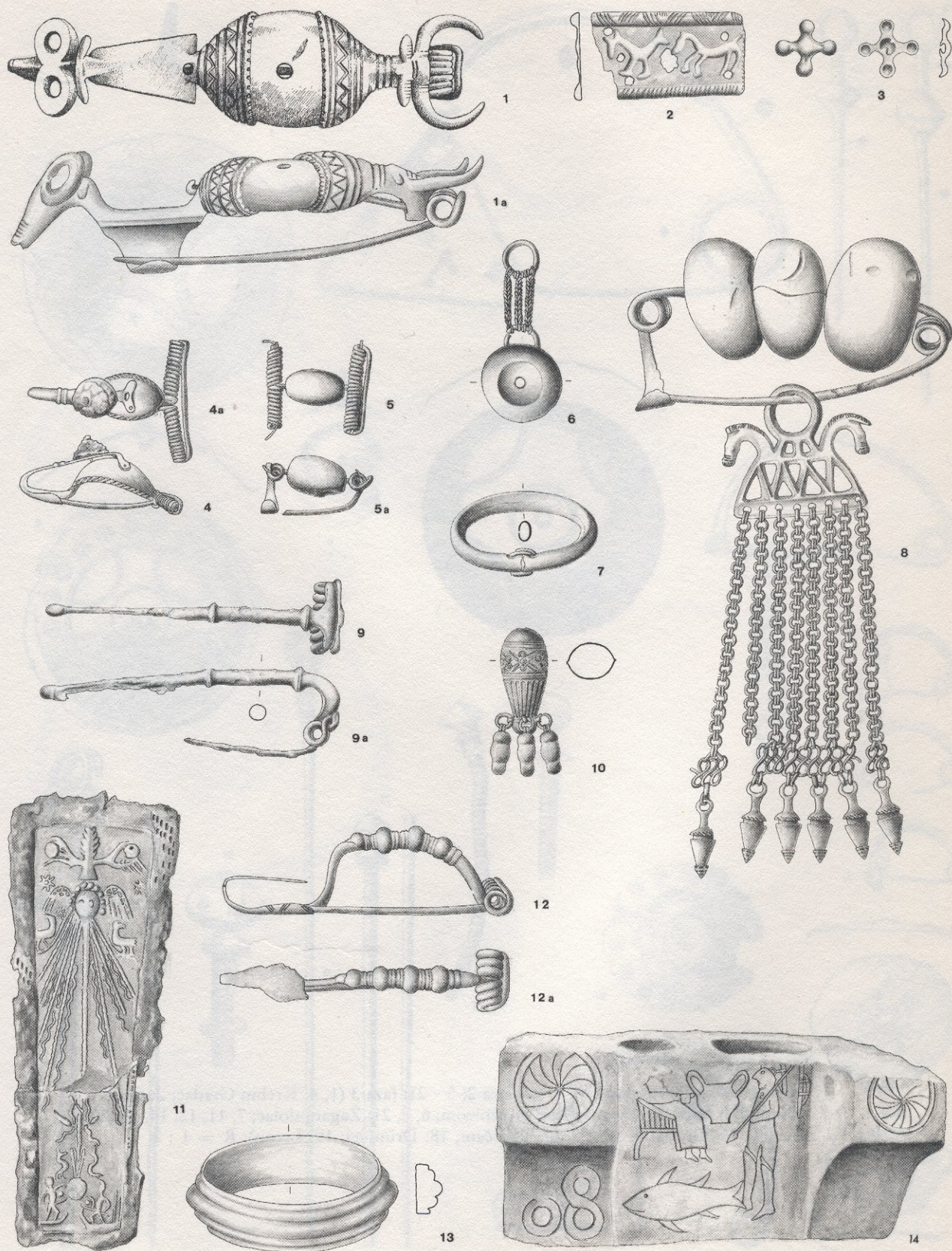
Japodska grupa — starije željezno doba (1—10, 14: Prozor; 11, 12: Kompolje, iz groba 45; 13, 15, 15a: Kompolje, iz groba 119); R — 1—15 = 1:2





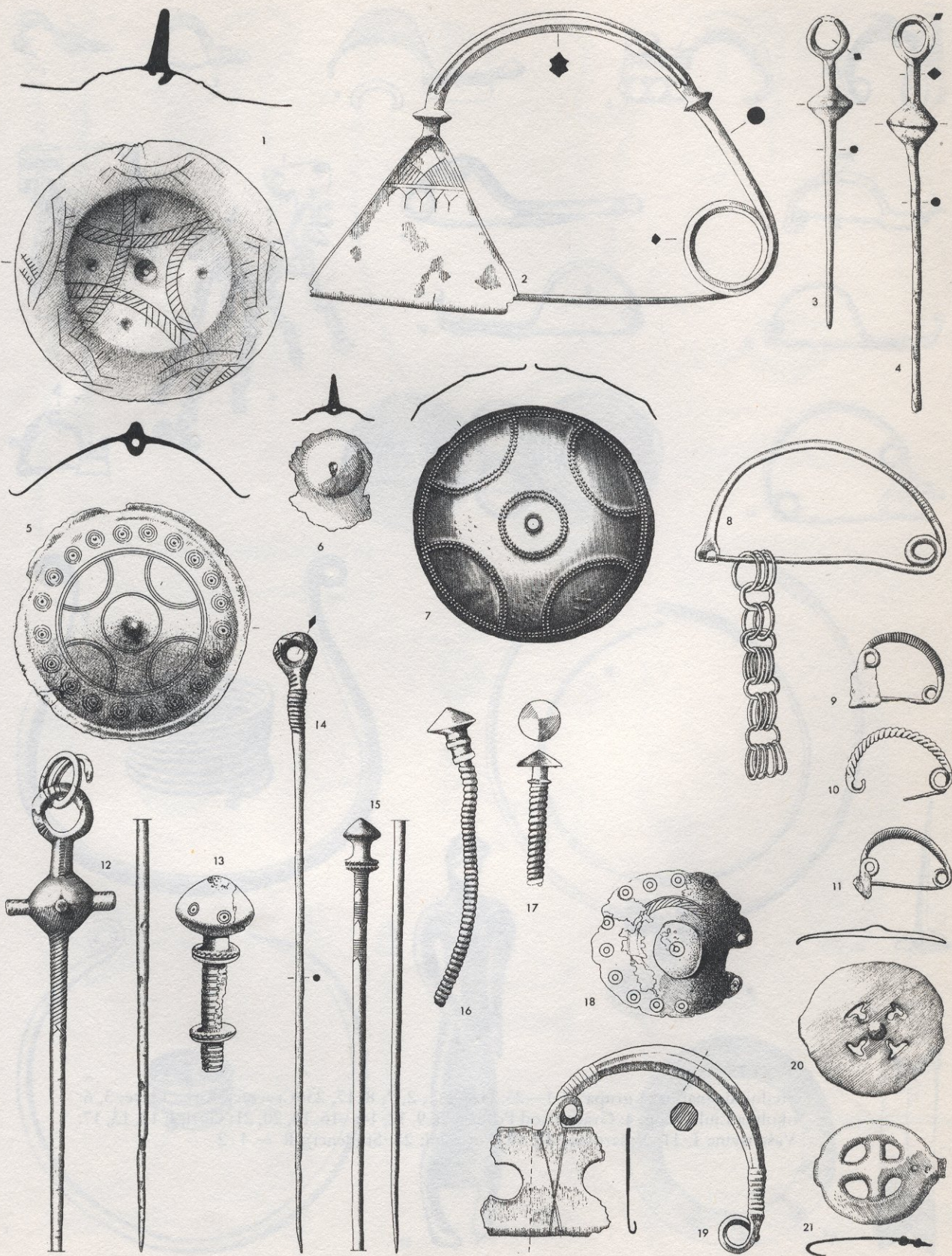
Japodska grupa — starije željezno doba (1, 4, 7: Kompolje, grob 47; 2, 2a, 3, 3a: Kompolje; 5, 6, 8—10, 12: Prozor; 11: Kompolje, grob, 262; 13: Vrebac, iz groba 4, tumul IV); R — 1—13 = 1:1





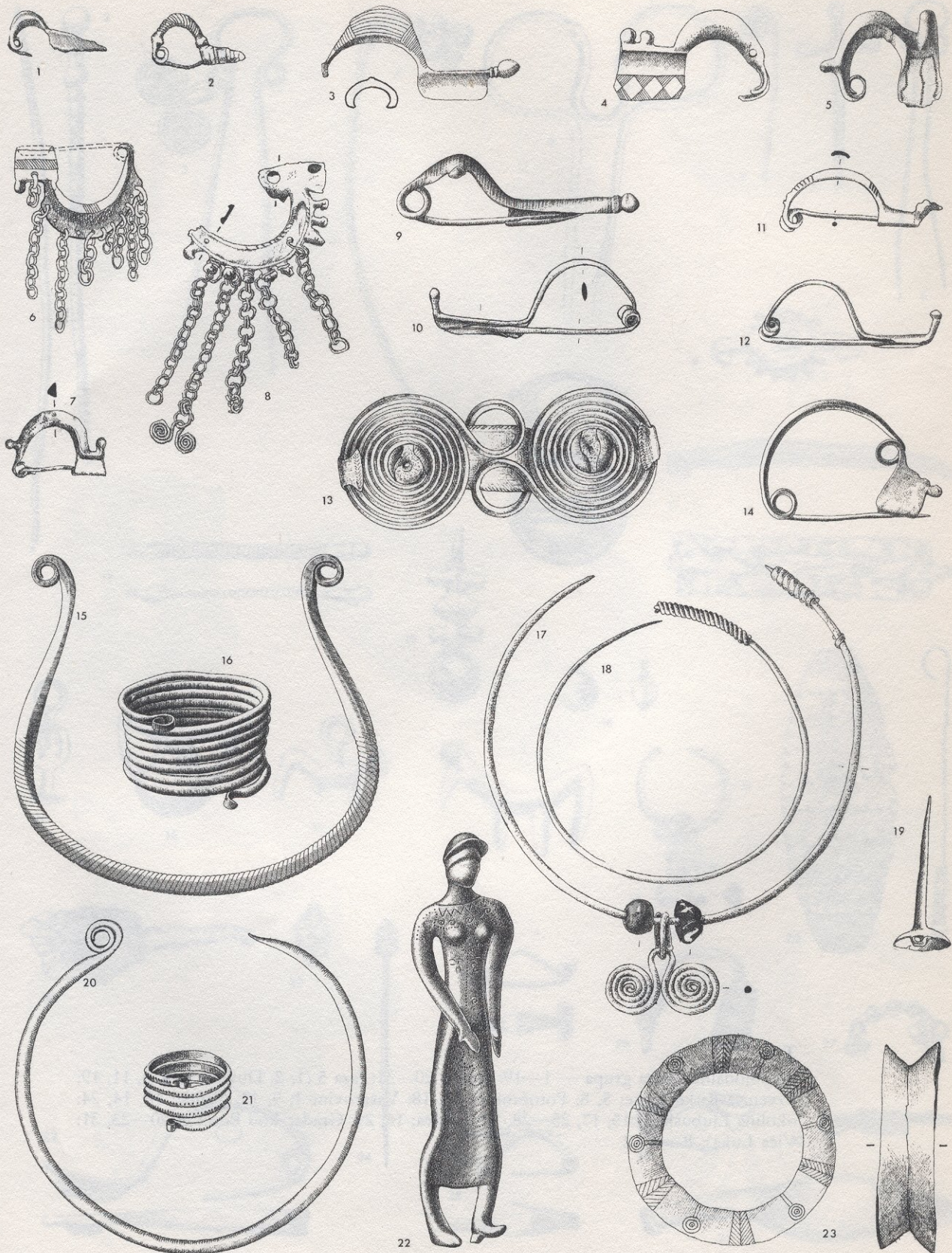
Japodska grupa — starije i mlade željezno doba (1, 1a: Jezerine, iz groba 145; 2, 3: Ribić, grob »e«; 4—10: Jezerine, grob 278; 11: Prozor; 12, 13: Vinica; 14: Ribić); R — 1—14 = 1:2





Srednjodalmatinska grupa — 1—4: faza 2; 5—21: faza 3 (1, 4: Krehin Gradac; 2: Otok u Vitini; 3: Korita; 5: Crvenica-Pod Stražnicom; 6, 8, 21: Žaganj-dolac; 7, 11, 12, 14, 15, 20: Gorica; 13: Grude; 9, 10, 16, 17: Potočani; 18: Drinovci; 19: Livno); R = 1 : 2





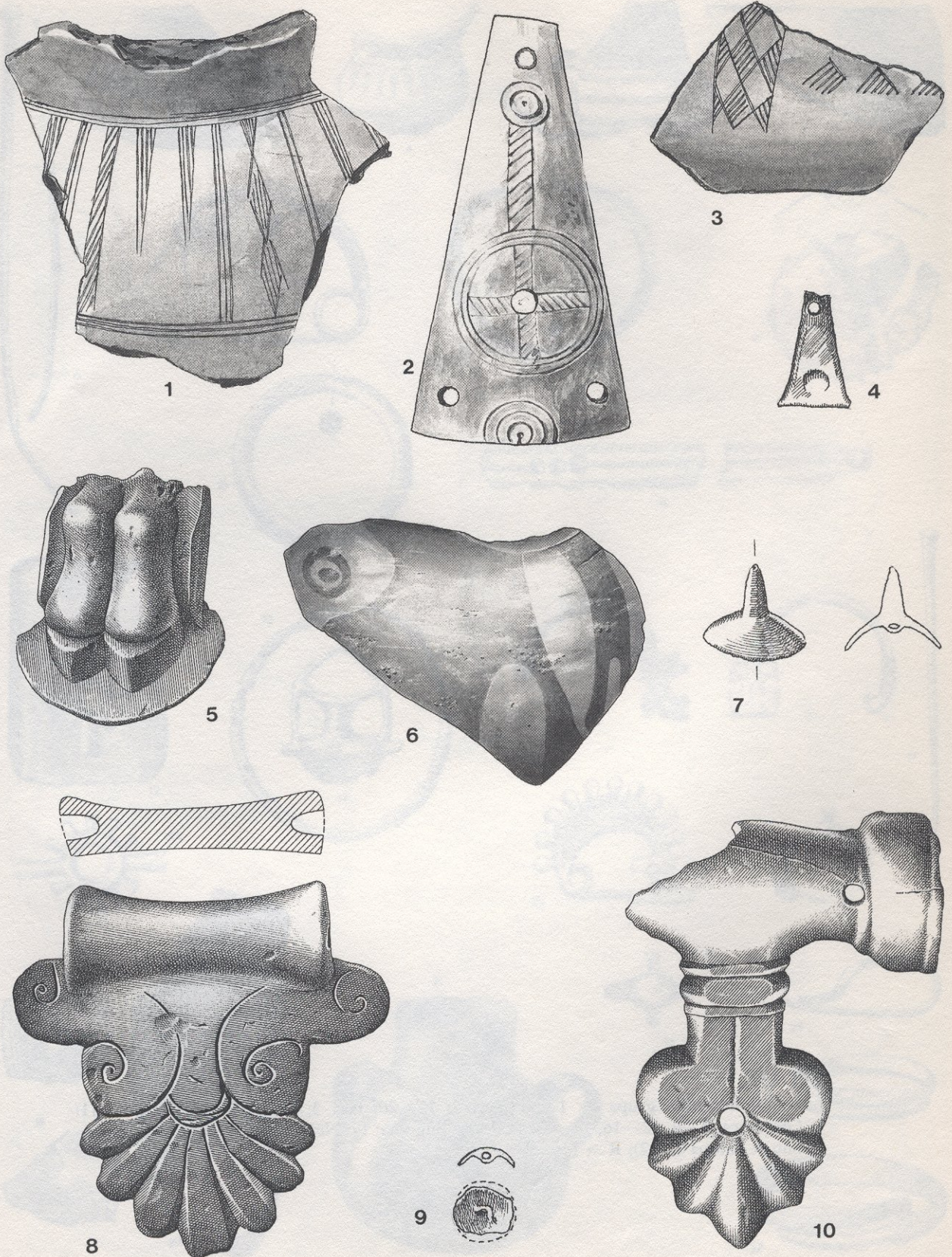
Srednjodalmatinska grupa — 1—23: faza 4 (1, 2, 7, 8, 17, 23: Crvenica-Ritke Liske; 3, 6: okolina Ljubuškog; 4: Gradac kod Posušja; 5, 9, 12, 14—16, 18, 20, 21: Gorica; 10, 13, 17: Vašarovine I, 11: Vašarovine II; 19: Potočani; 22: Studenci); R = 1:2





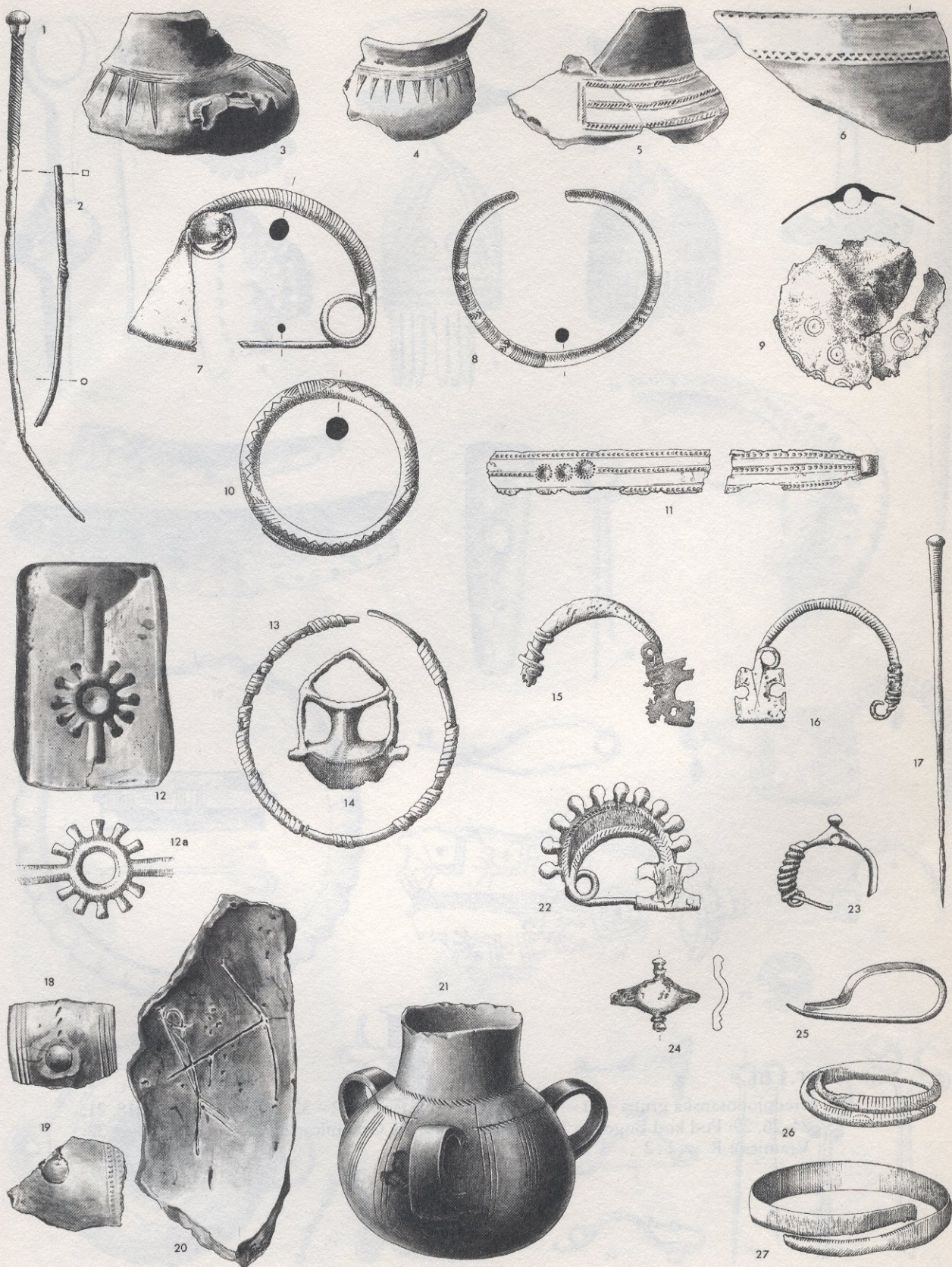
Srednjodalmatinska grupa — 1—19: faza 4; 20—31: faza 5 (1, 2: Duvno; 3, 4, 6, 11, 19: Crvenica-Ritke Liske; 5, 8: Potočani; 7, 12, 18: Vašarovine I; 9, 13: Grude; 10, 14, 24: okolina Ljubuškog; 15, 17, 25—28, 30: Gorica; 16, 29: Gradac kod Posušja; 20—23, 31: Viča Luka); R = 1:2





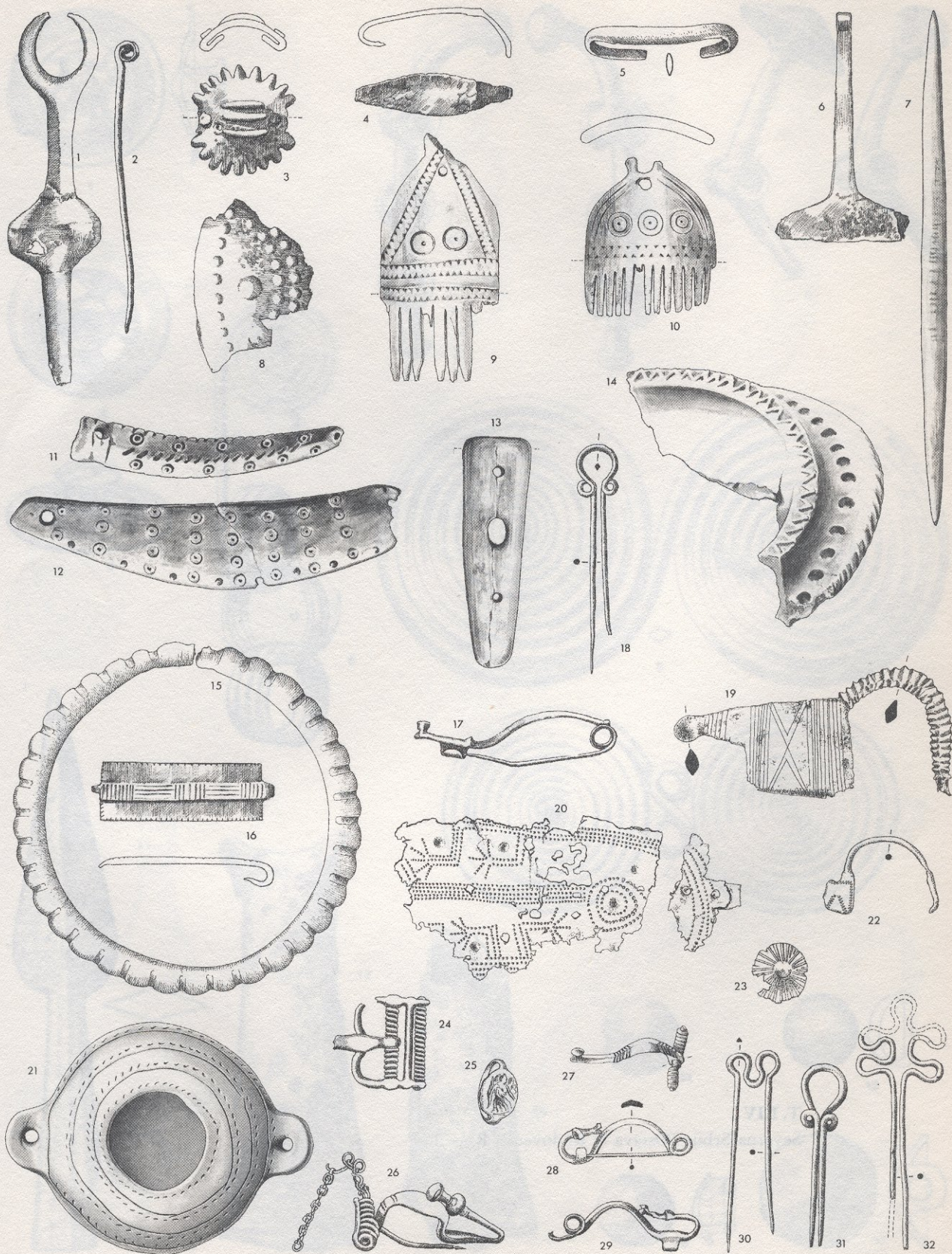
Srednjobosanska grupa — 1, 3: faza 2; 2: faza 3; 4—7, 9, 10: faza 4; 8: faza 5 (1, 2, 4—10: Pod kod Bugojna; 3: Semizovac); R = 1:1





Srednjobosanska grupa — 1—11: faza 2; 12—20: faza 3; 21—27: faza 4 (1, 7—11: Gračanica; 2—6, 12—16, 18—27: Pod kod Bugojna; 17: Nević polje; 12a: otisak u plastelinu iz kalupa sl. 12); R = 1 : 2





Srednjobosanska grupa — 1—14: faza 4; 15—21: faza 5; 22—32: faza 6 (1—15, 17, 18, 21, 24, 26, 29: Pod kod Bugojna; 16: Semizovac; 19, 20: Gračanica; 22, 23, 25, 27, 28, 30—32: Vratnica); R = 1:2