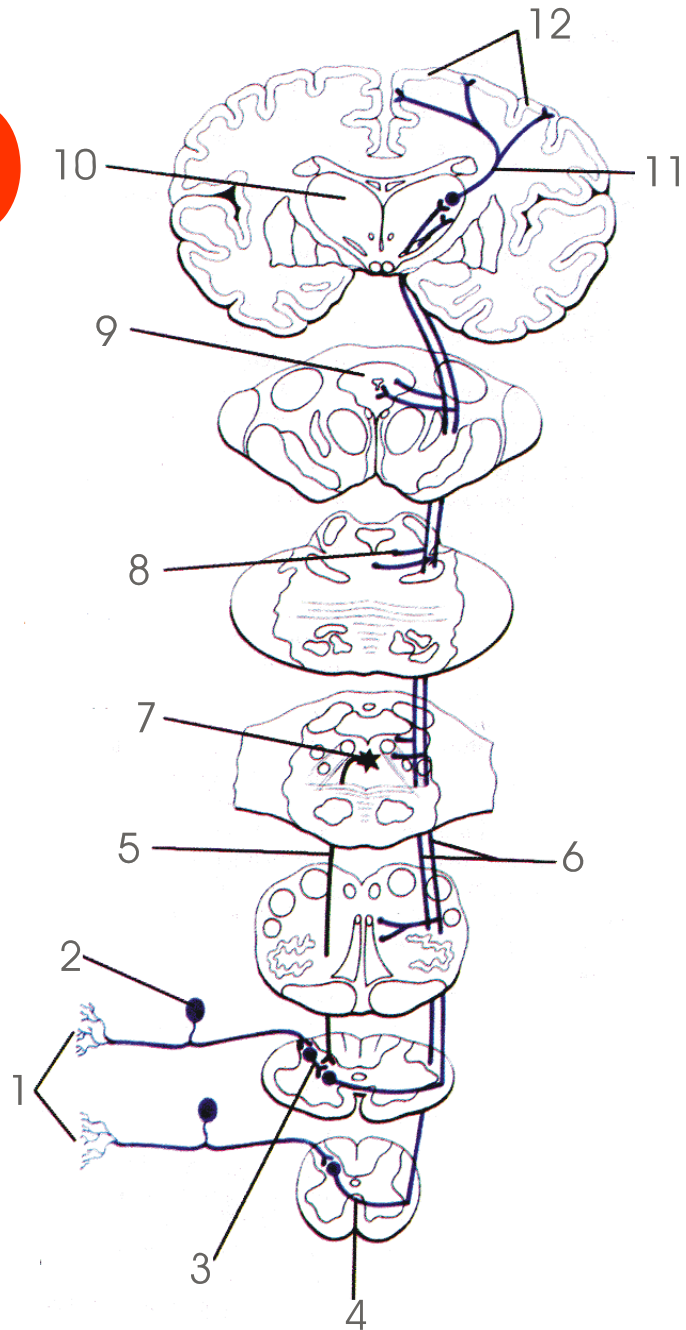
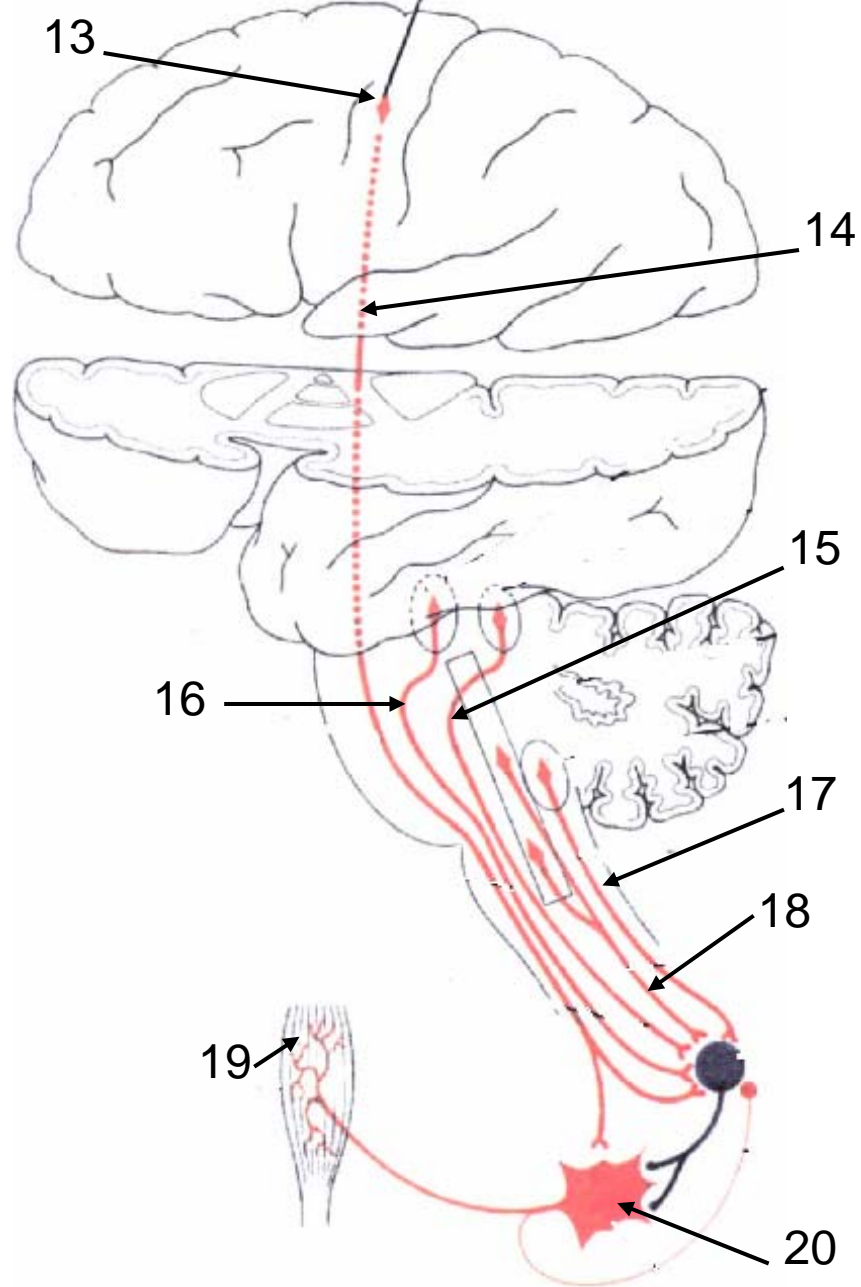


# A - grupa

# OPCA MORFOLOGIJA



ANTEROLATERALNI SPINOTALAMIČKI SUSTAV



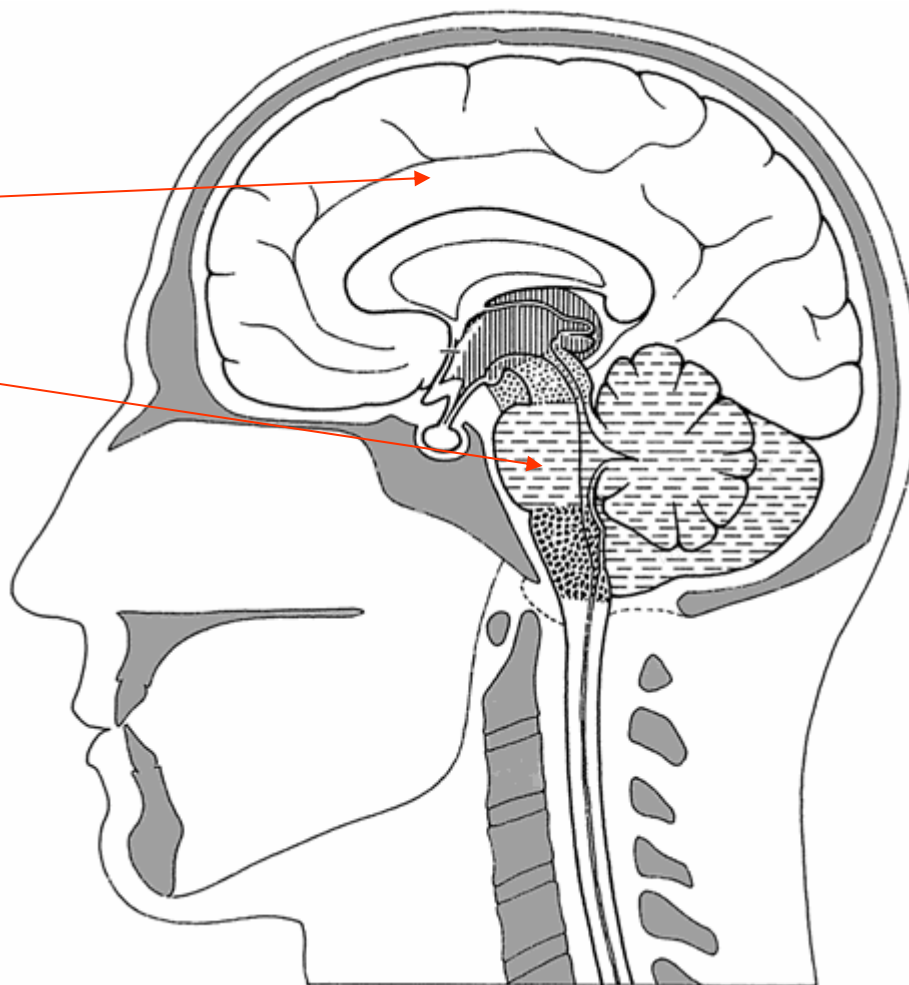
SILAZNI MOTORSNI PUTOWI

## KOJEM MOŽDANOM MJEHURIĆU PRIPADA TVORBA

**A**

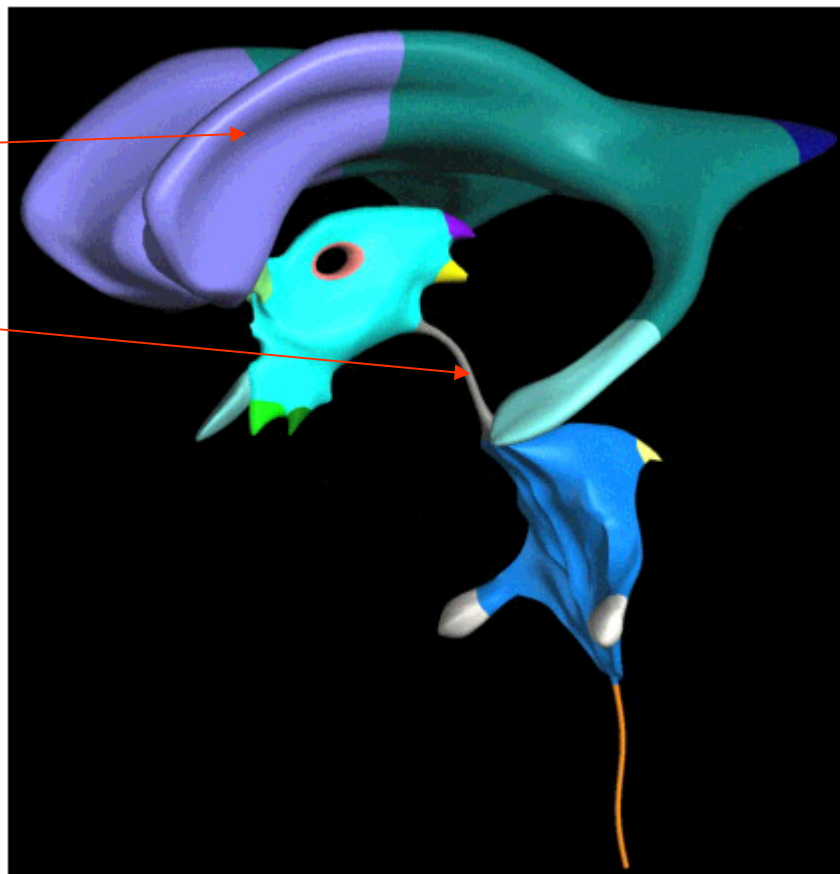
**1.**

**2.**



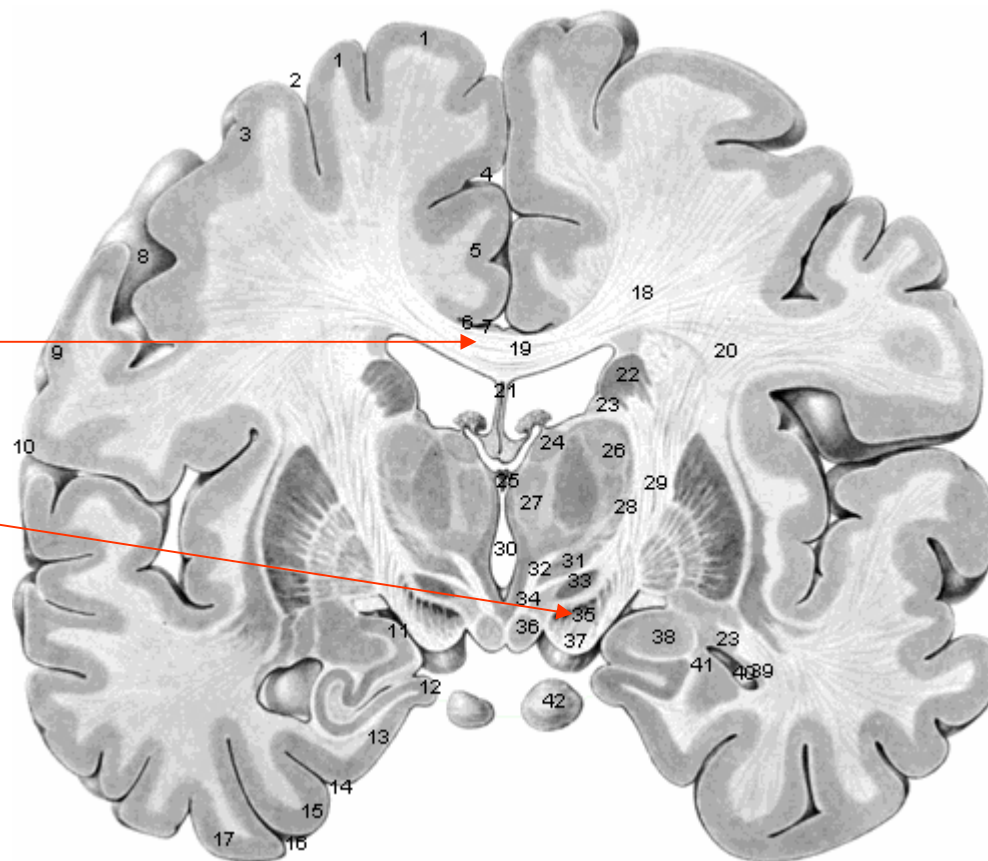
3.

4.



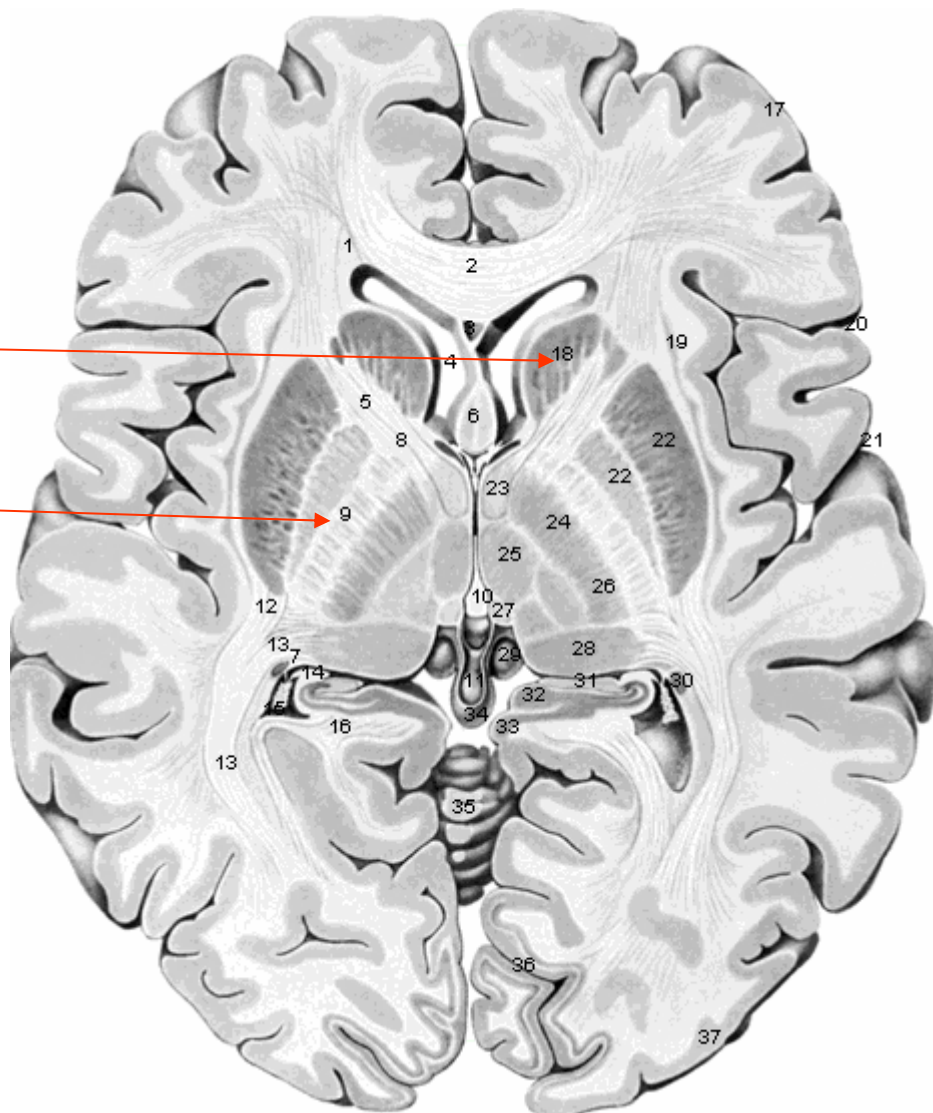
**5.19**

**6.35**



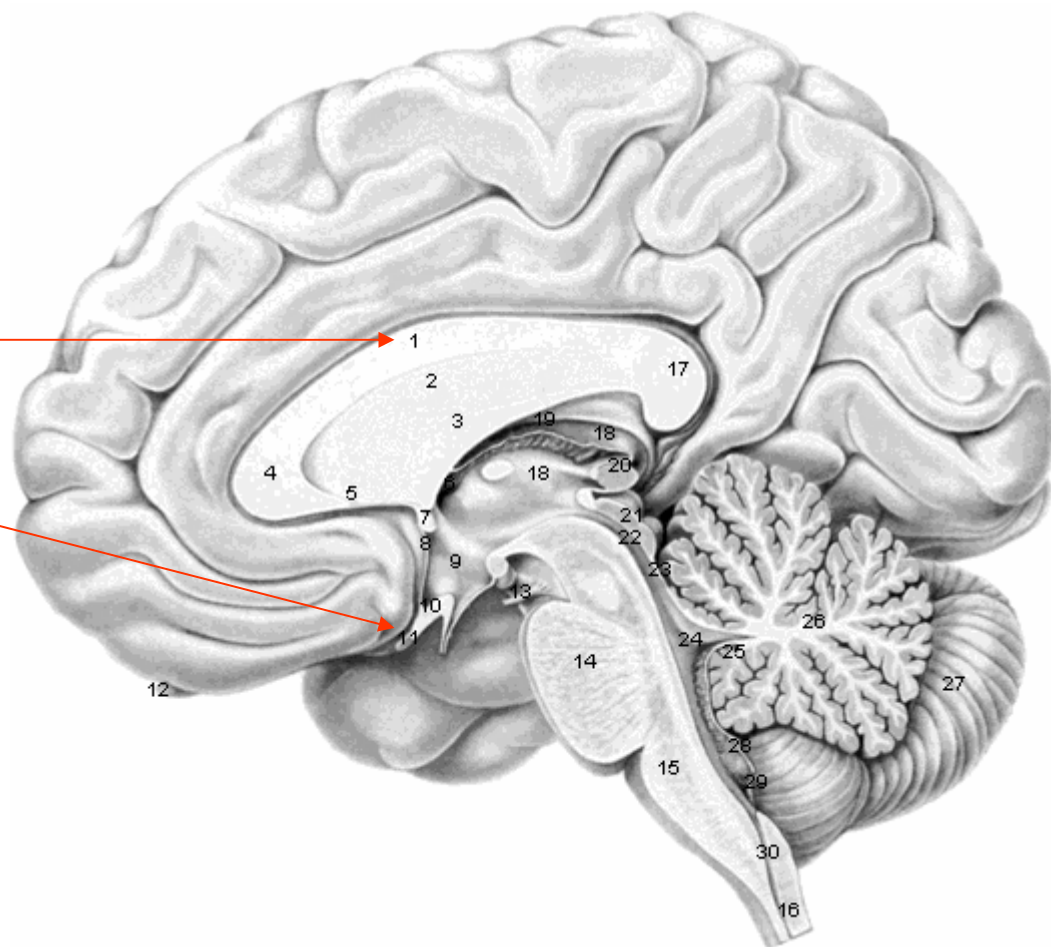
**7.**18

**8.**9

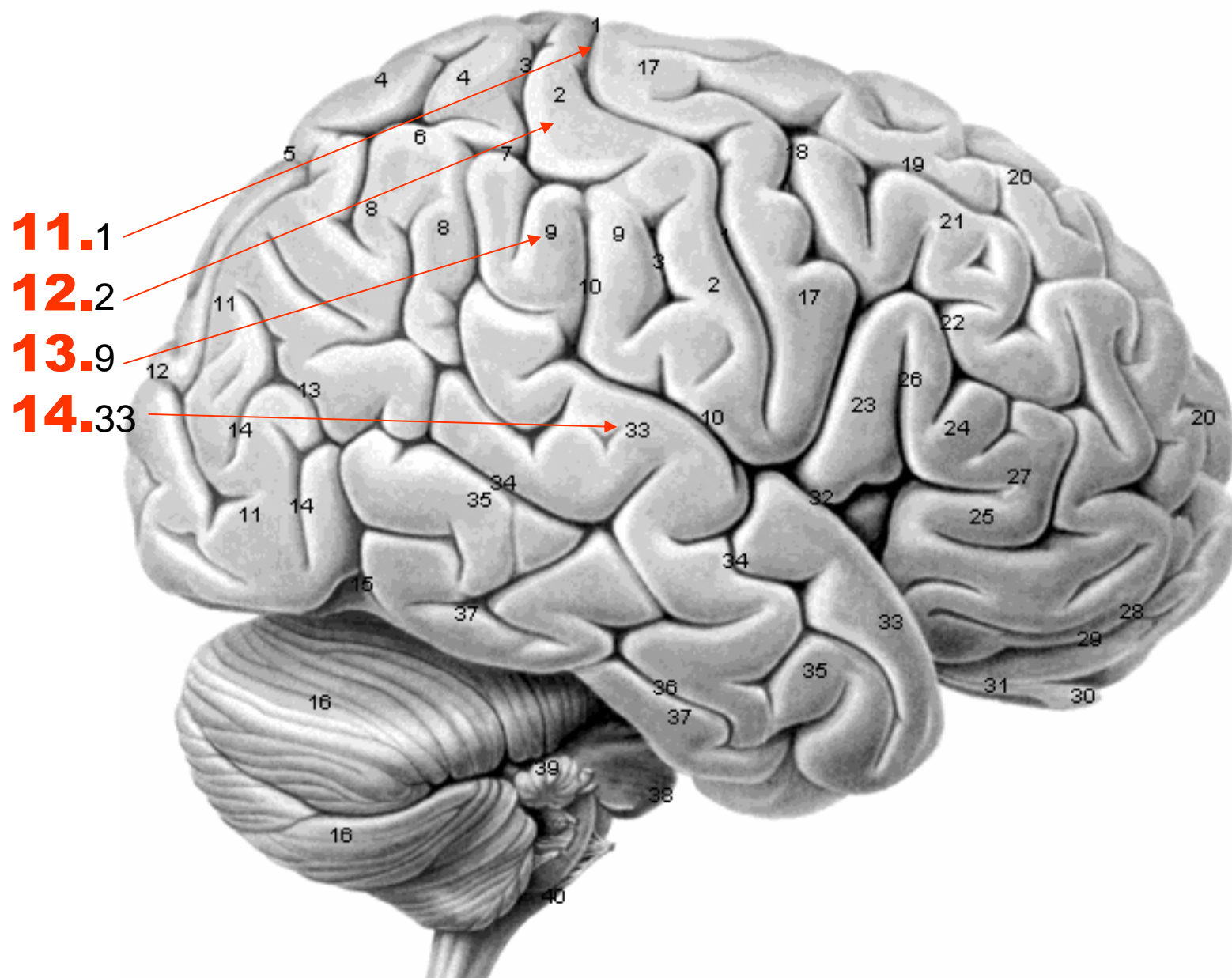


**9.1**

**10.13**





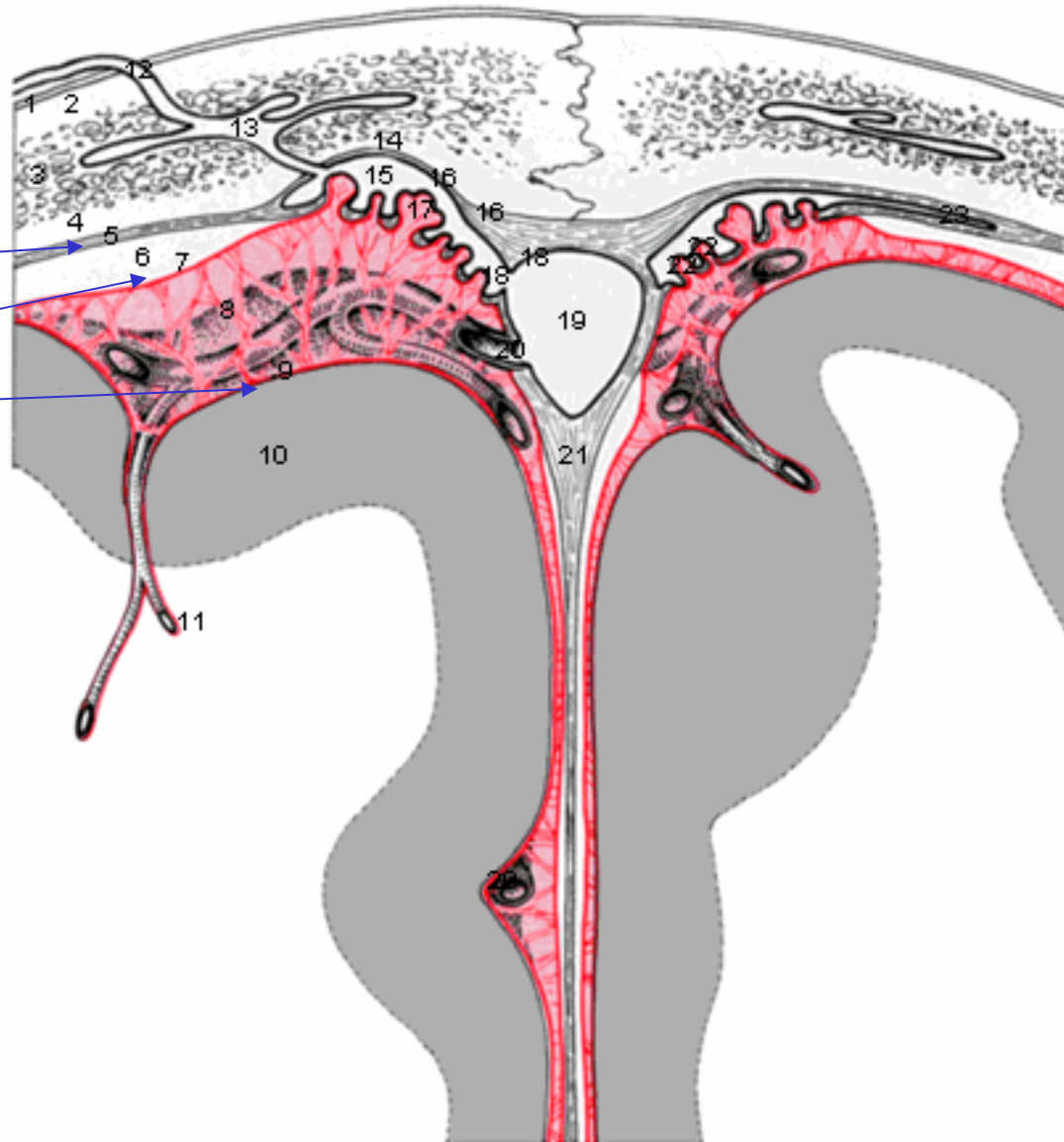




**15.5**

**16.7**

**17.9**



**18.24**

**19.5**

**20.11**

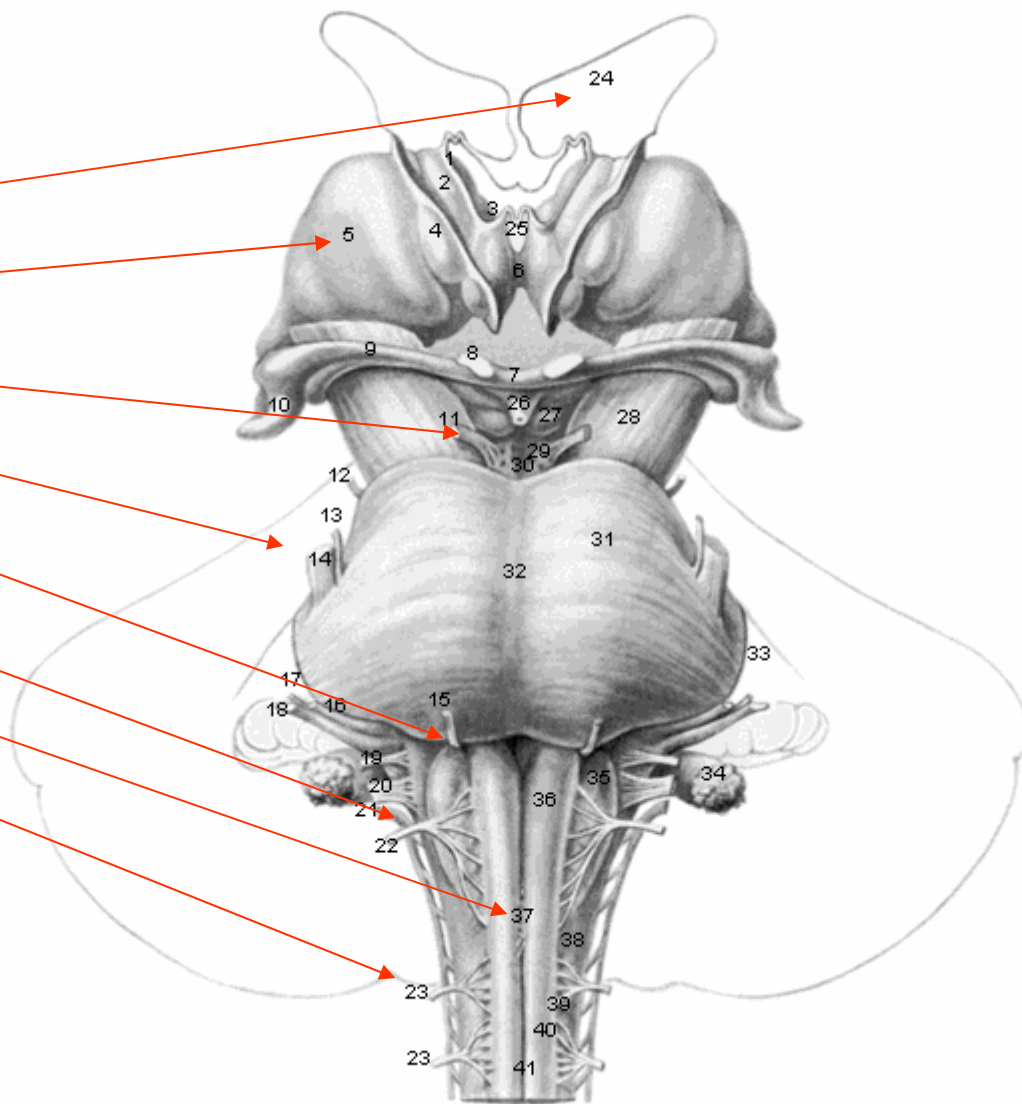
**21.14**

**22.15**

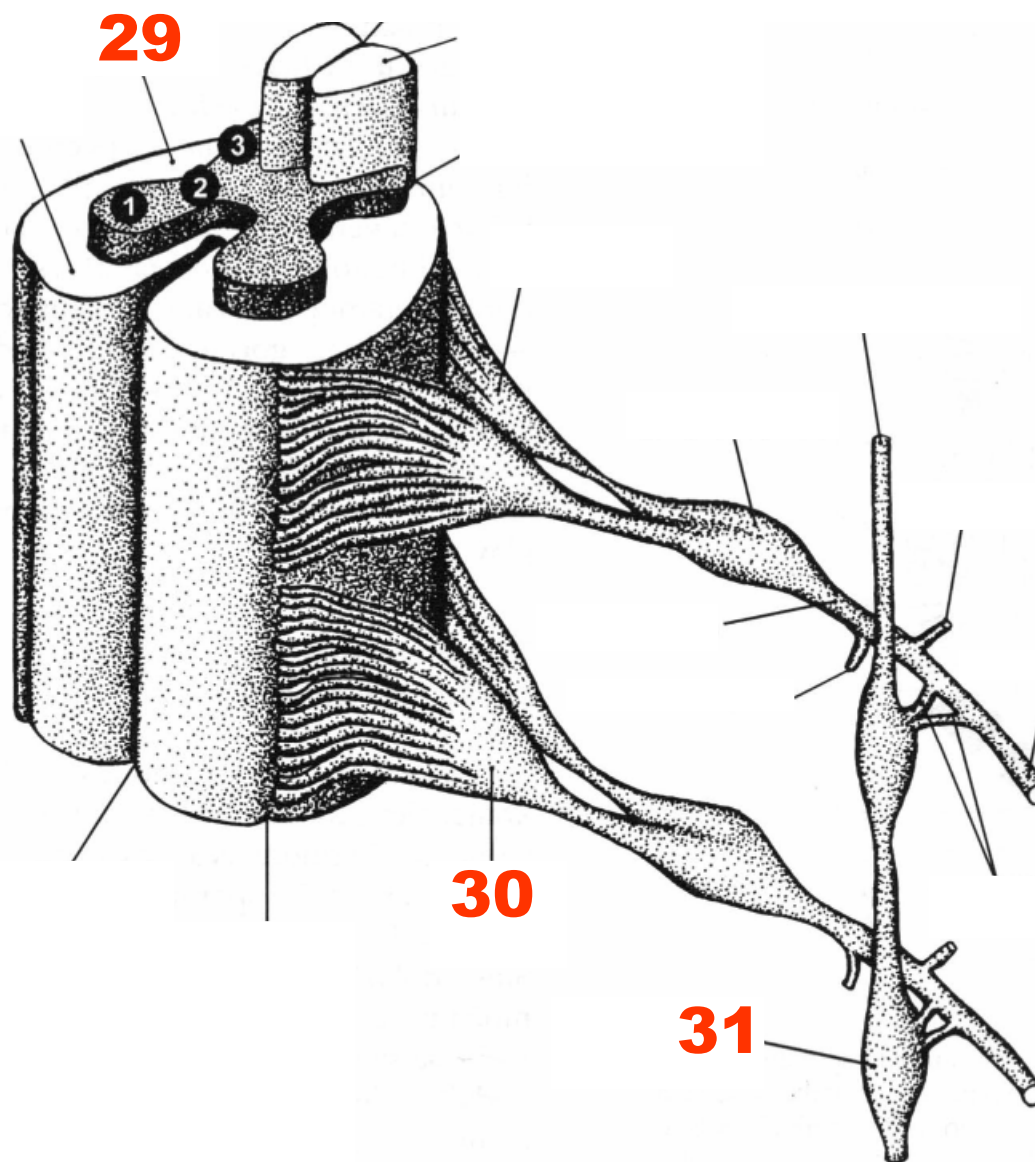
**23.22**

**24.37**

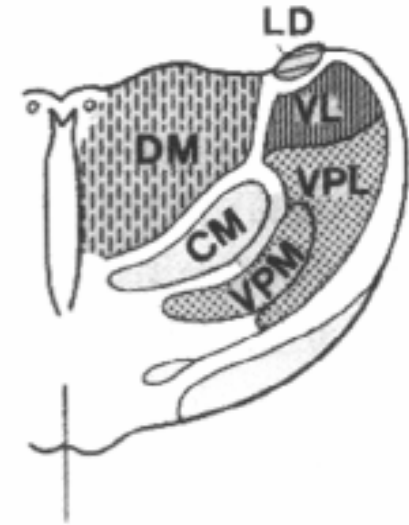
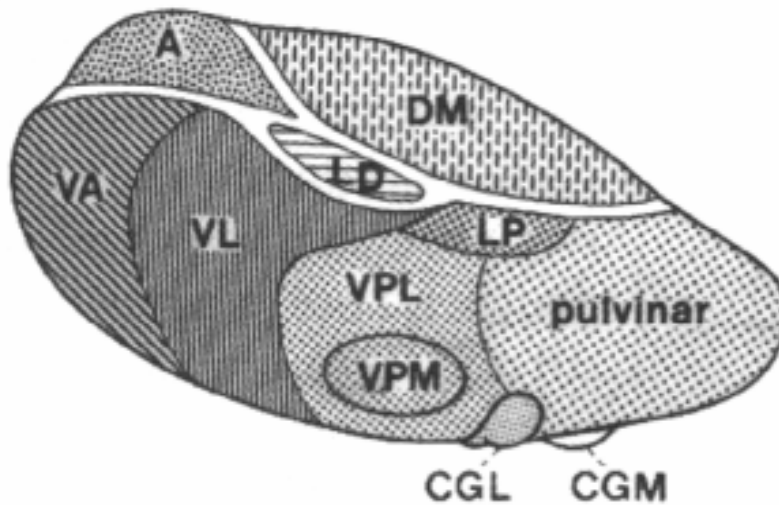
**25.23**



**26** - 1; **27** - 2; **28** - 3



# ŠTO OZNAČAVAJU KRATICE



- 32 A
- 33 VA
- 34 VL
- 35 VPL
- 36 VPM
- 37 CGL
- 38 CGM
- 39 LP
- 40 DM

