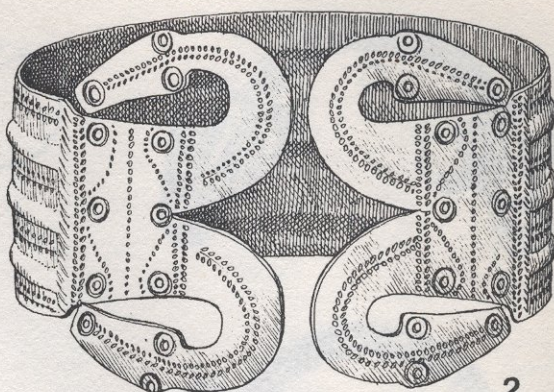
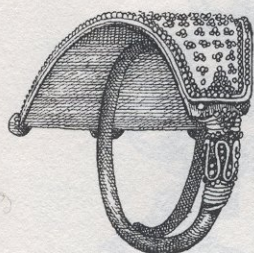


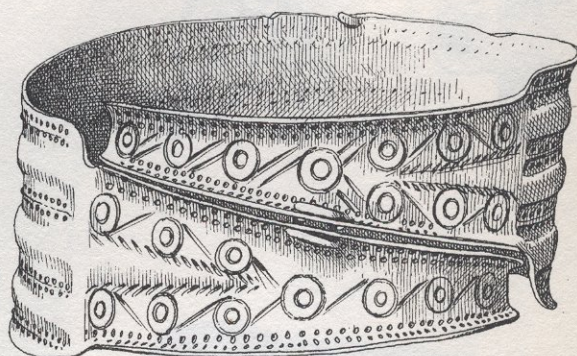
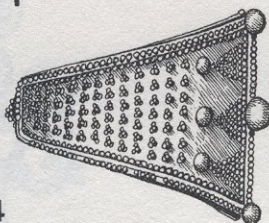
1



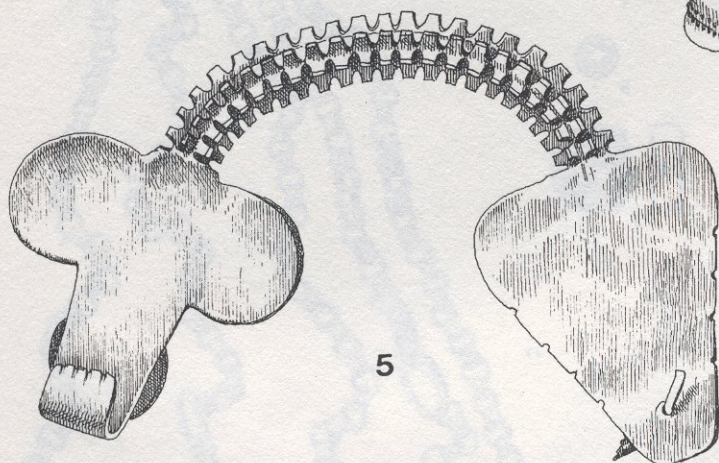
2



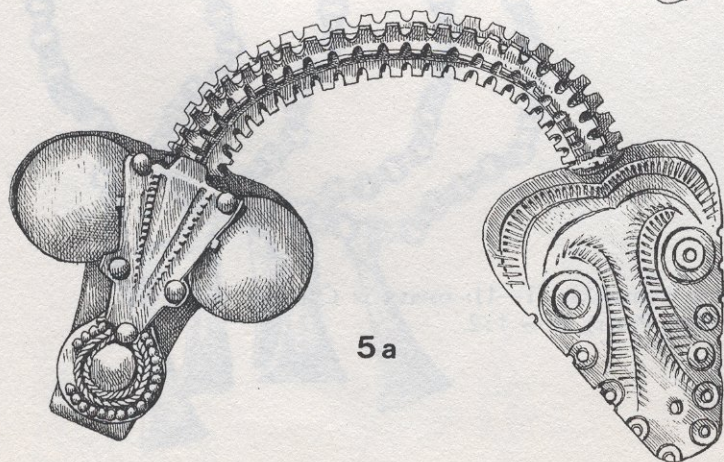
4



3



5



5a



6



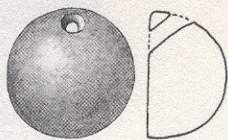
6a



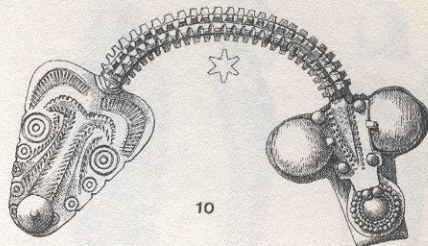
7



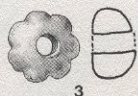
1



2



10



3



4



5



6



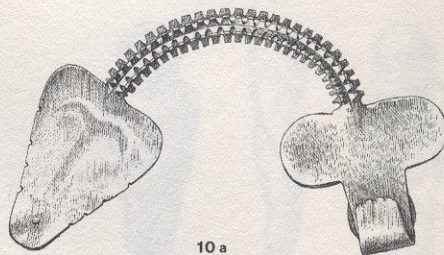
7



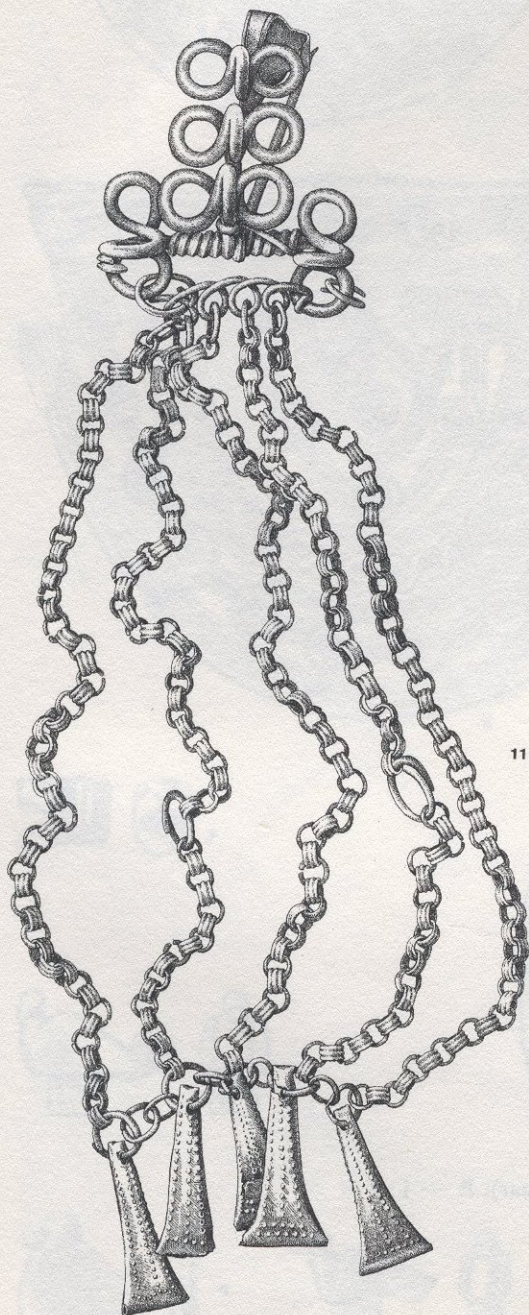
8



9



10 a



11

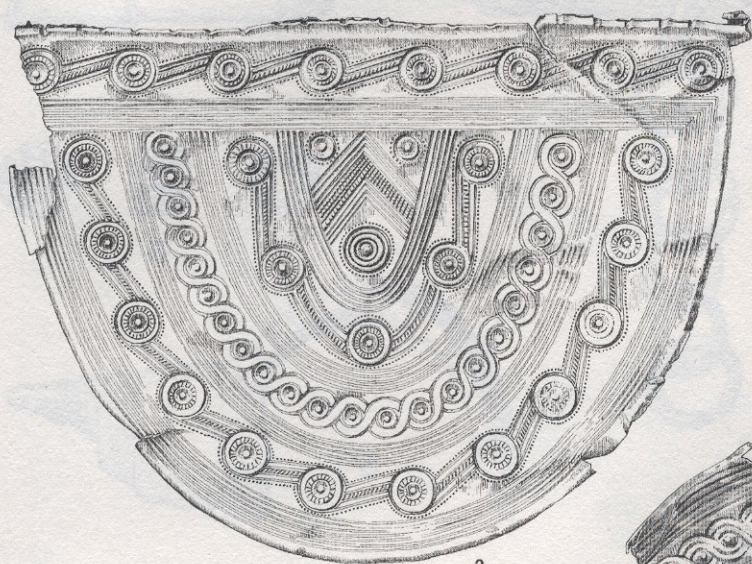


12

Sremska grupa zapadnobalkanskog kompleksa (1—11: ostava iz Čuruga); Kneževski grobovi jugozapadne Srbije (12: Novi Pazar); R — 1:2



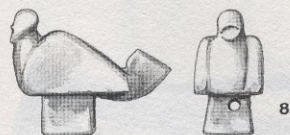
1



2



7



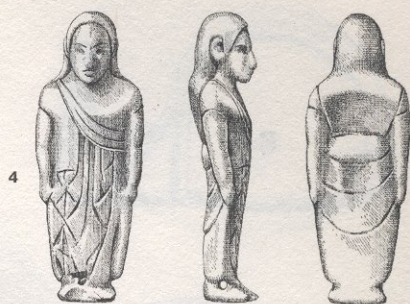
8



9



10



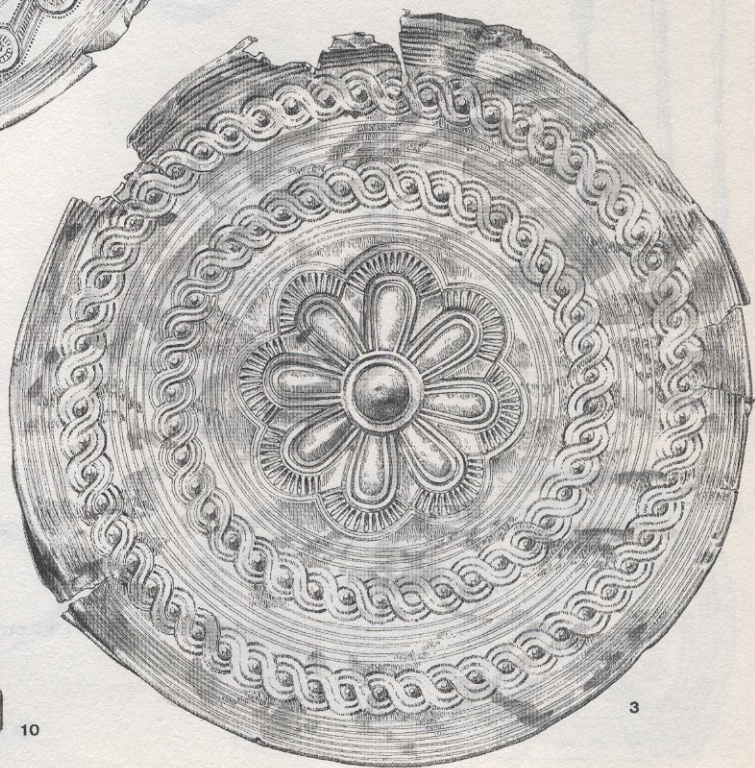
4



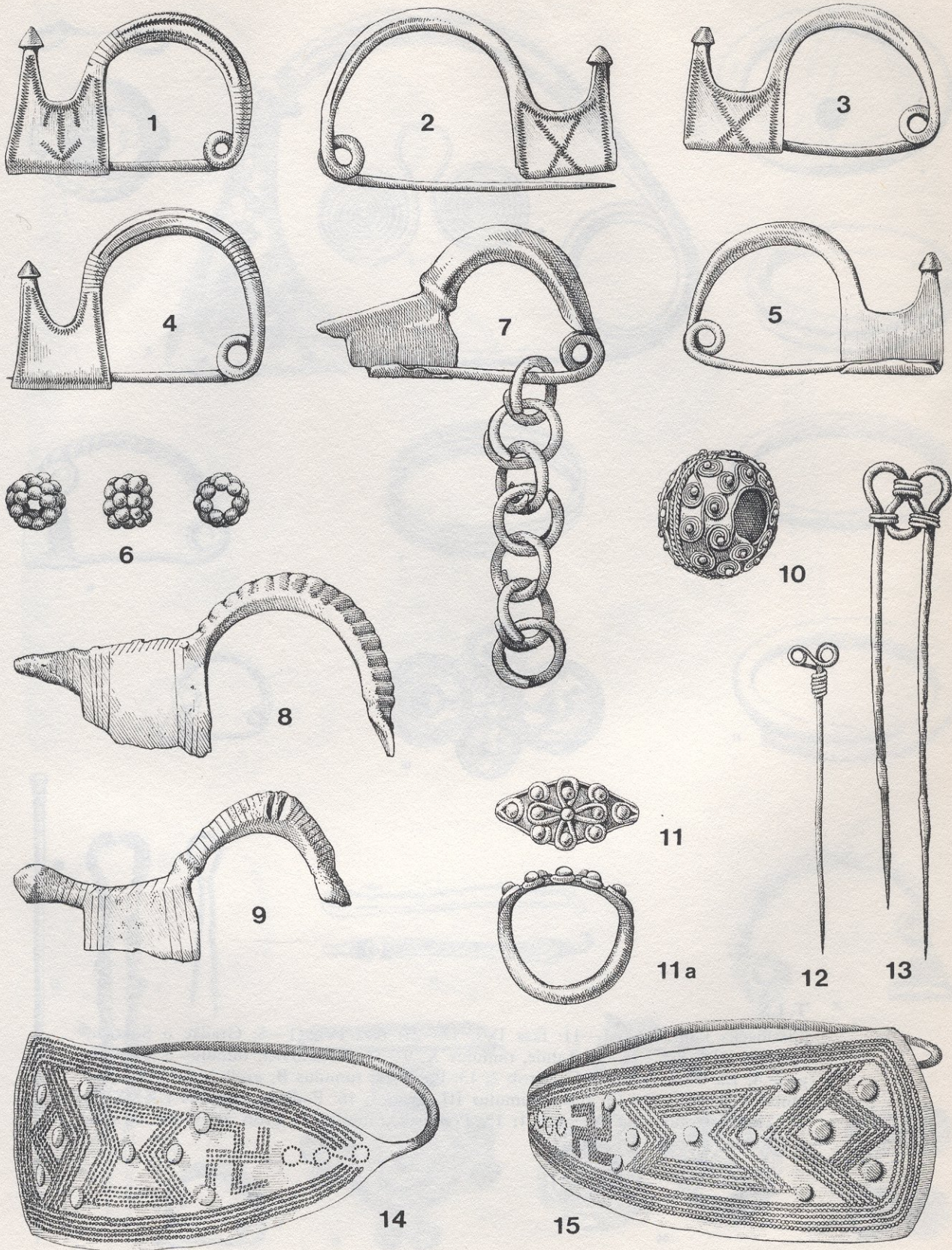
5

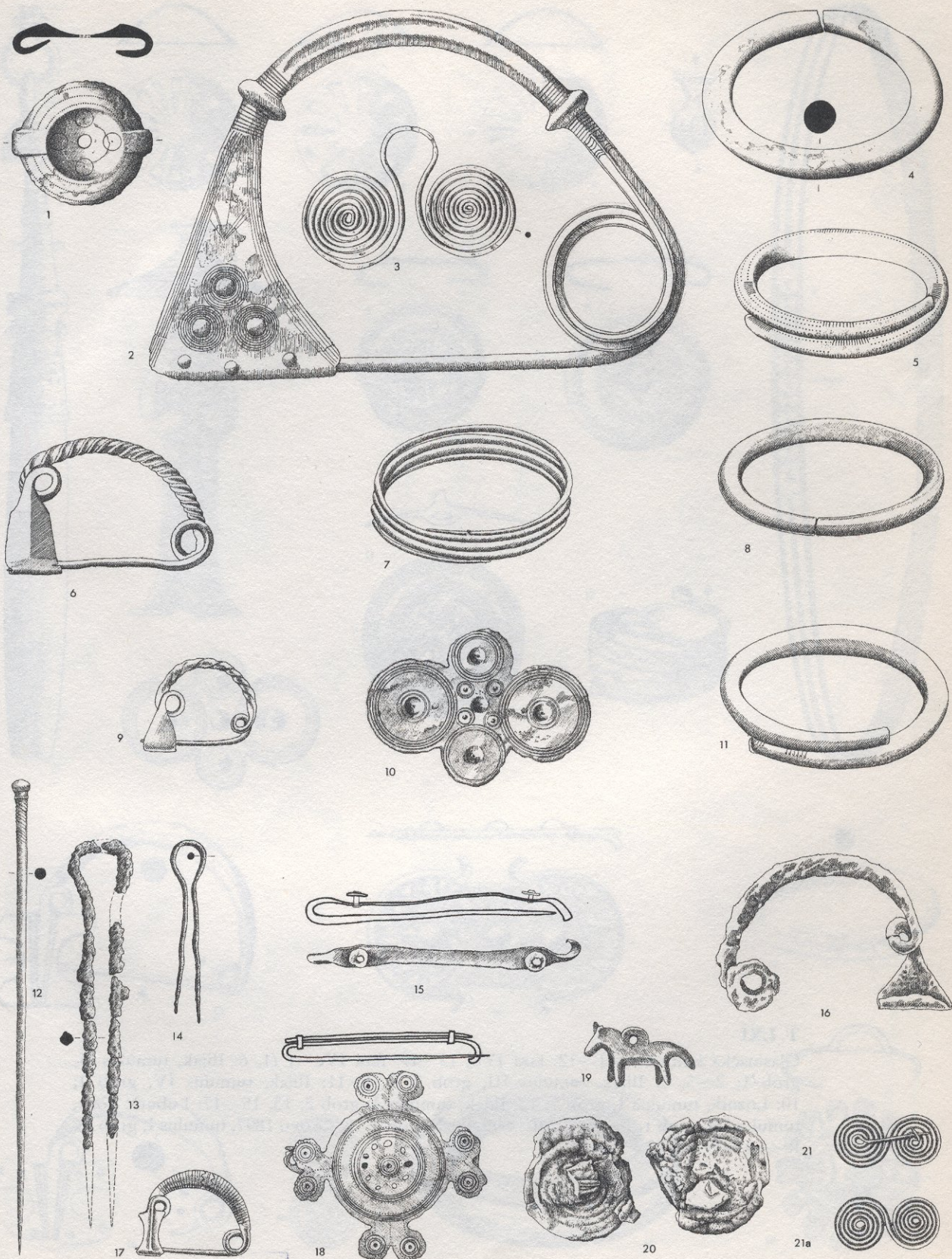


6



3

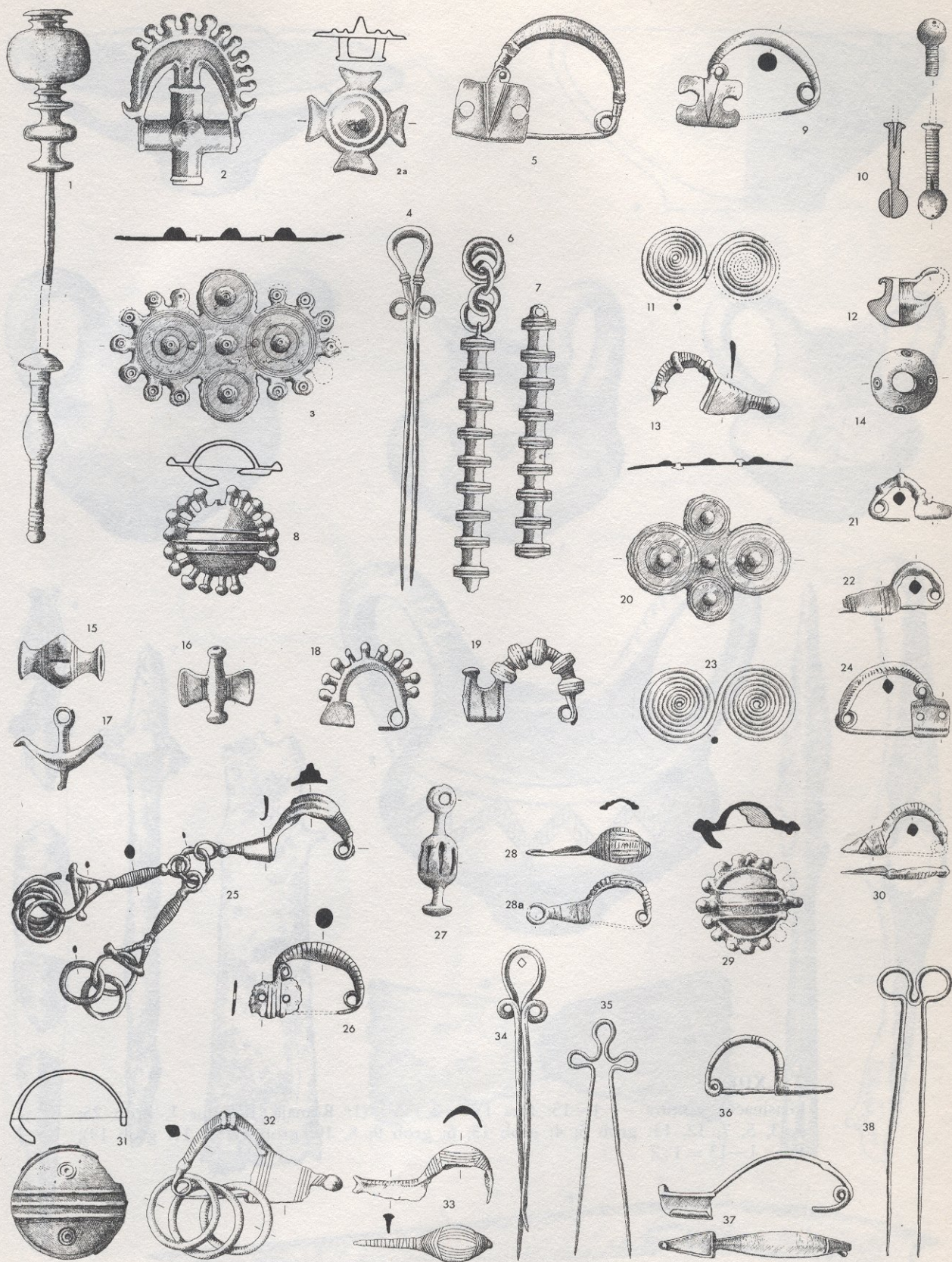




Glasinačka kultura — 1—11: faza IVa; 12—21: faza IVb (1—5: Gradac u Sokocu, tumulus III, grob 1; 6—8: Taline, tumulus X; 9—11: Rusanovići, tumulus XXXVIII, grob 4; 12: Ilijak, tumulus III, grob 2; 13: Podilijak, tumulus B, grob 2; 14: Podilijak, tumulus B, grob 5b; 15: Ilijak, tumulus III, grob 3; 16: Podlaze, tumulus LXXXVI; 17, 21: Ilijak, tumulus IV, grob 1; 18: Podilijak, tumulus A, grob 3; 19, 20: Gradac u Sokocu); R — 1—21 = 1:2



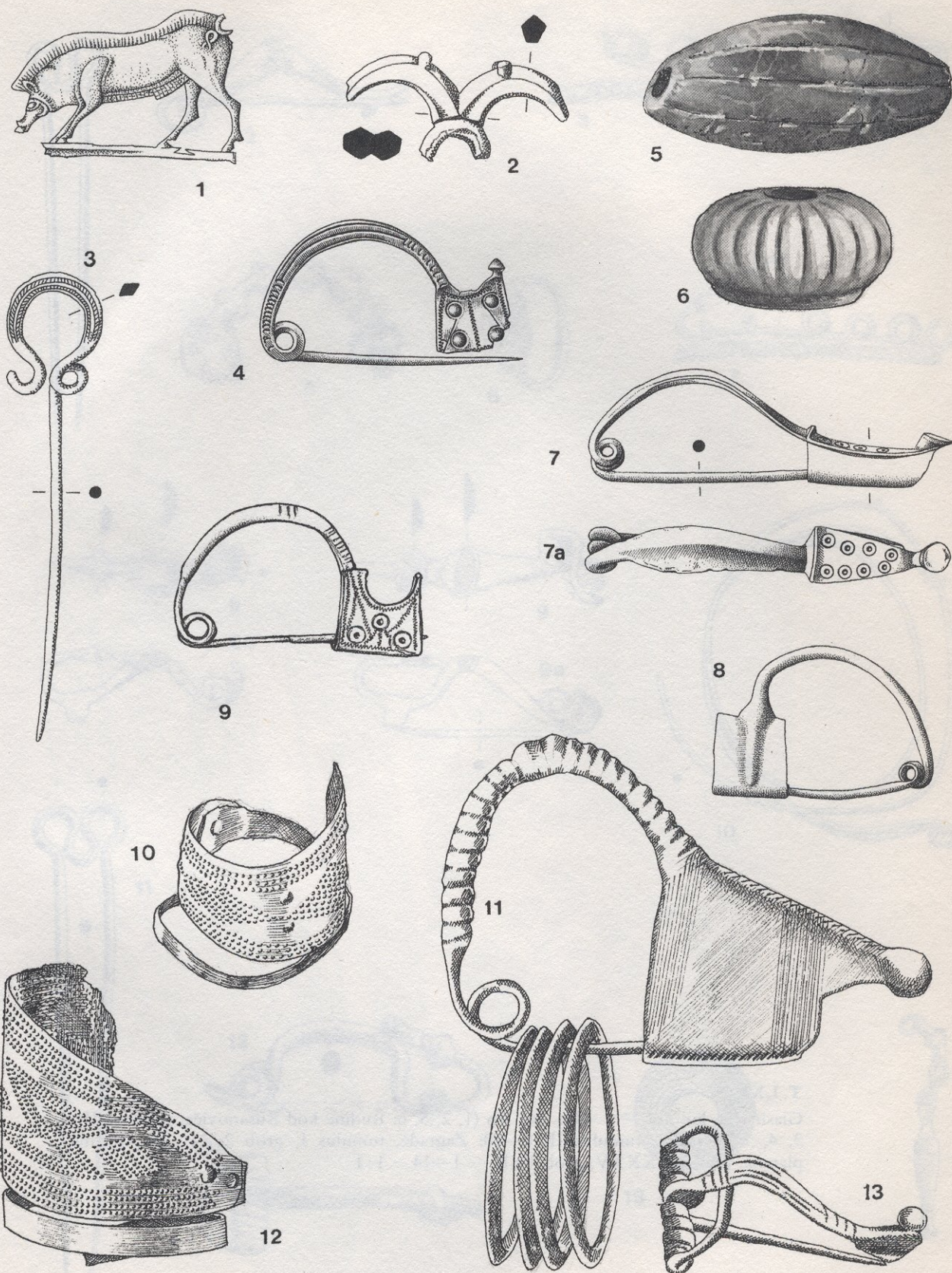
Glasinačka kultura — 1—12: faza IVb; 13—19: faza IVc—1 (1, 6: Ilijak, tumulus II, grob 1; 2—5, 9: Ilijak, tumulus III, grob 2; 7, 8, 11: Ilijak, tumulus IV, grob 1; 10: Loznik, tumulus I, grob 1; 12: Ilijak, tumulus I, grob 2; 13, 15—17: Luburić polje, tumulus III, grob 1; 14, 19: Brezje, tumulus I, grob 2; 18: Osovo 1897, tumulus I, grob 1); R — 1—19 = 1 : 2



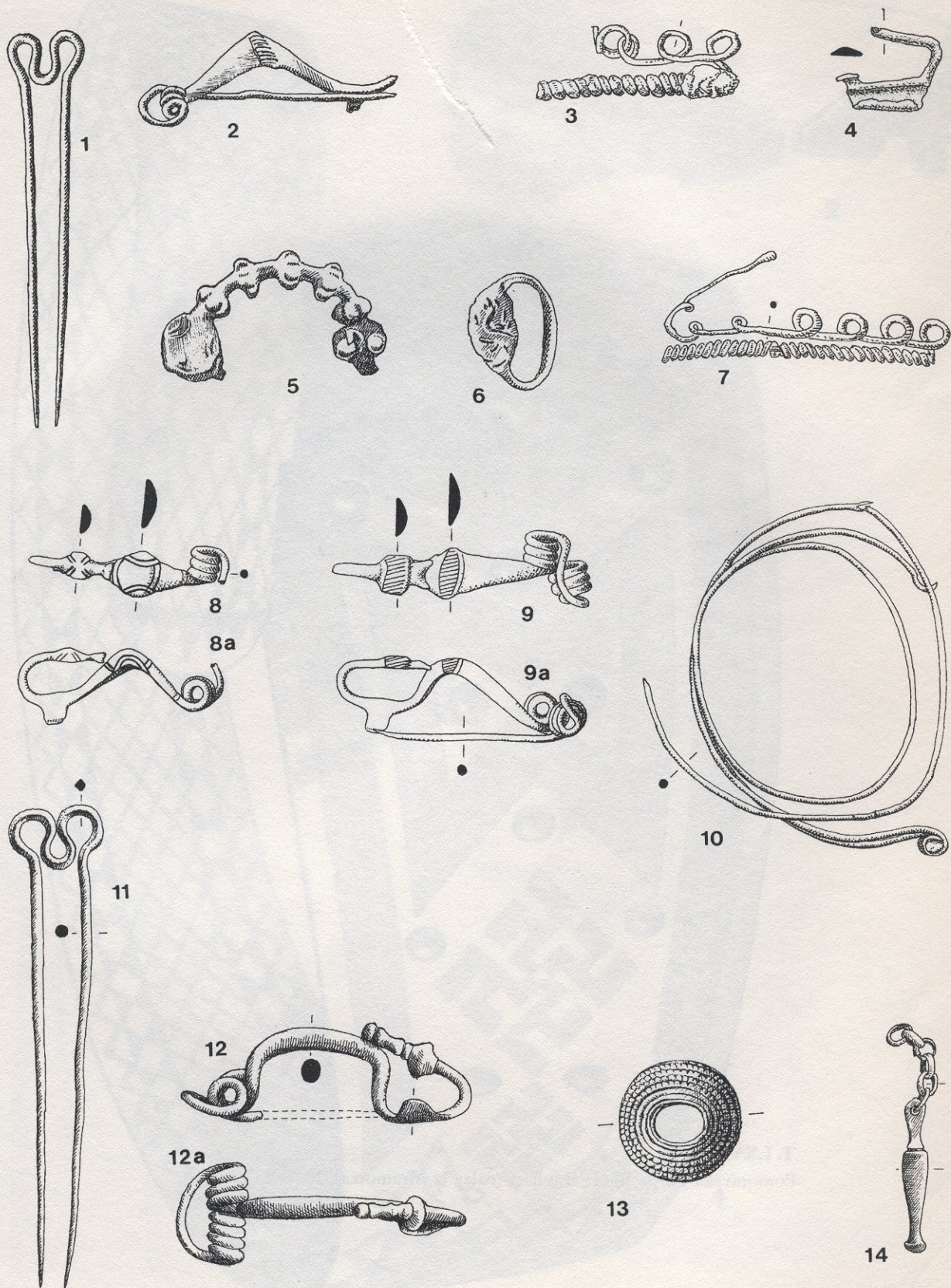
Glasinačka kultura — 1—5: faza IVc—1; 6—35: faza IVc—2; 36—38: faza Va (1, 2, 2a: Osovo 1897, tumulus II, grob 1; 3: Brankovići, tumulus I, grob 1; 4: Radava, tumulus IX, grob 1; 5: Osovo 1897, tumulus I, grob 1; 6, 7: Osovo 1896, tumulus I, grob 1; 8: Čitluci, tumulus I, grob 5; 9—14: Brankovići, tumulus III, grob 4; 15, 16: Gosinja planina, tumulus XXIII, grob 4; 17: Osovo 1896, tumulus II, grob 3; 18: Ilijak, tumulus XXII, grob 1; 19: Borovsko, tumulus III; 20—24: Brankovići, tumulus XII, grob 1; 25, 26: Brankovići, tumulus II, grob 3; 27—30: Brankovići, tumulus I, grob 4; 31: Osovo 1897, tumulus II, grob 2; 32, 33: Miletine, tumulus I, grob 2; 34, 35: Hrastovača, tumulus II; 36—38: Potpećine, tumulus IV, grob 1); R — 1—38 = 1:2



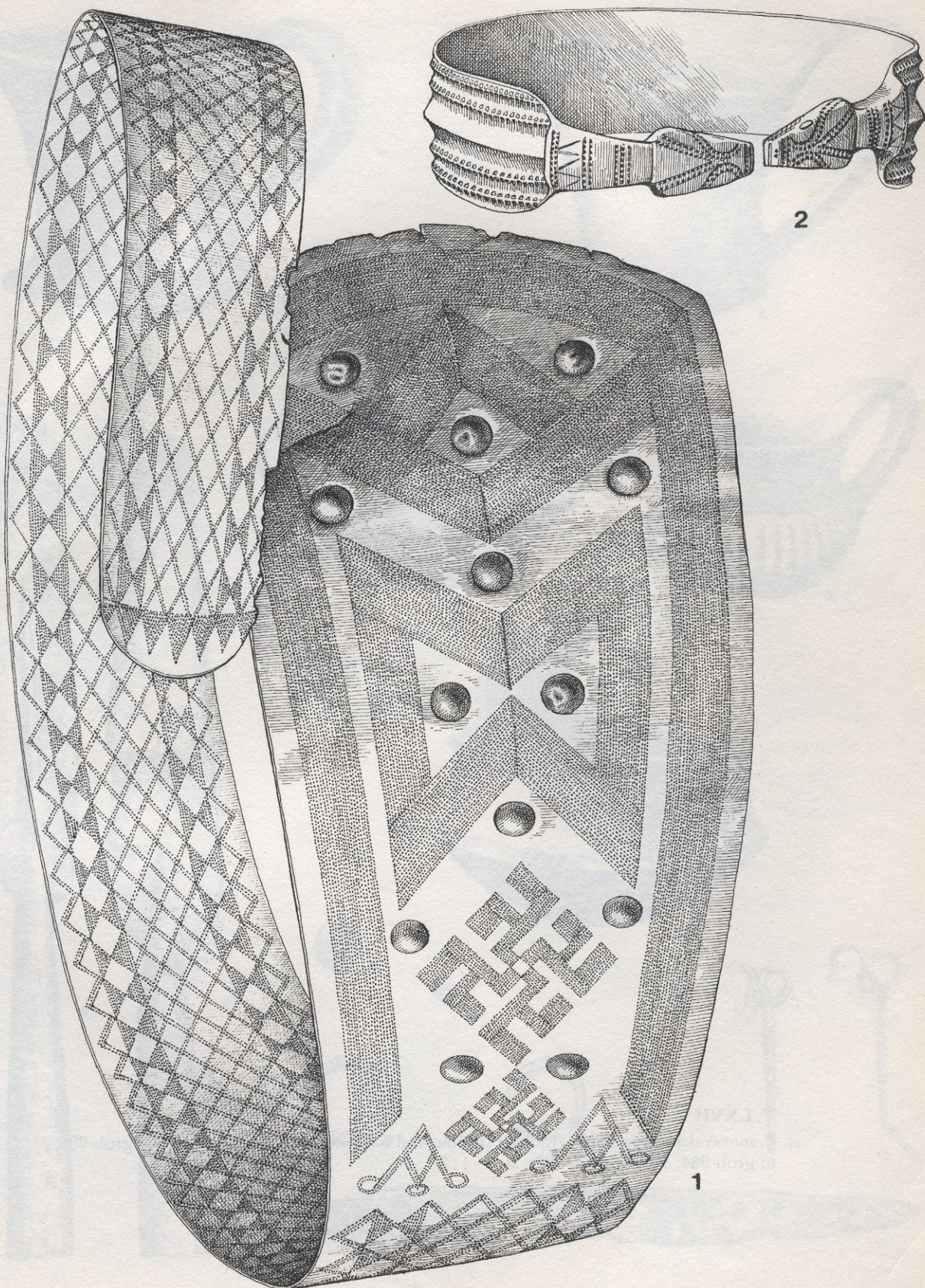
Glasinačka kultura — 1—13: faza IVc—2 i Va (1: Romaja, tumulus I, grob 25; 2, 3, 5, 7, 12, 13: grob 5; 4: grob 15; 6: grob 9; 8, 10: grob 17; 9, 11: grob 19); R— 1—13 = 1:2



Glasinačka kultura — 1—3, 9: faza IVc—2; 4—8, 10—13: faza Va (1—3: Zagrade, tumulus I, grob 3; 4: Crvena Lokva, tumulus CIII; 5, 6: Romaja, tumulus I, grob 21; 7, 8: Vražići, tumulus III, grob 5; 9: Rusanovići, tumulus XVI, grob 2; 10, 13: Čavarine, tumulus II; 11, 12: Potpećine, tumulus IX, grob 2); R — 1—13 = 1:1



Glasinačka kultura — 1—14: faza Vb (1, 2, 5, 6: Rudine kod Rusanovića, tumulus III; 3, 4, 7: Vratnica, tumulus II; 8—10: Zagrade, tumulus I, grob 2; 11—14: Gosinja planina, tumulus XXXV, grob 1); R — 1—14 = 1:1



Pomoravska grupa Rača—Ljuljaci (nalaz iz Mramorca); R — 1:1

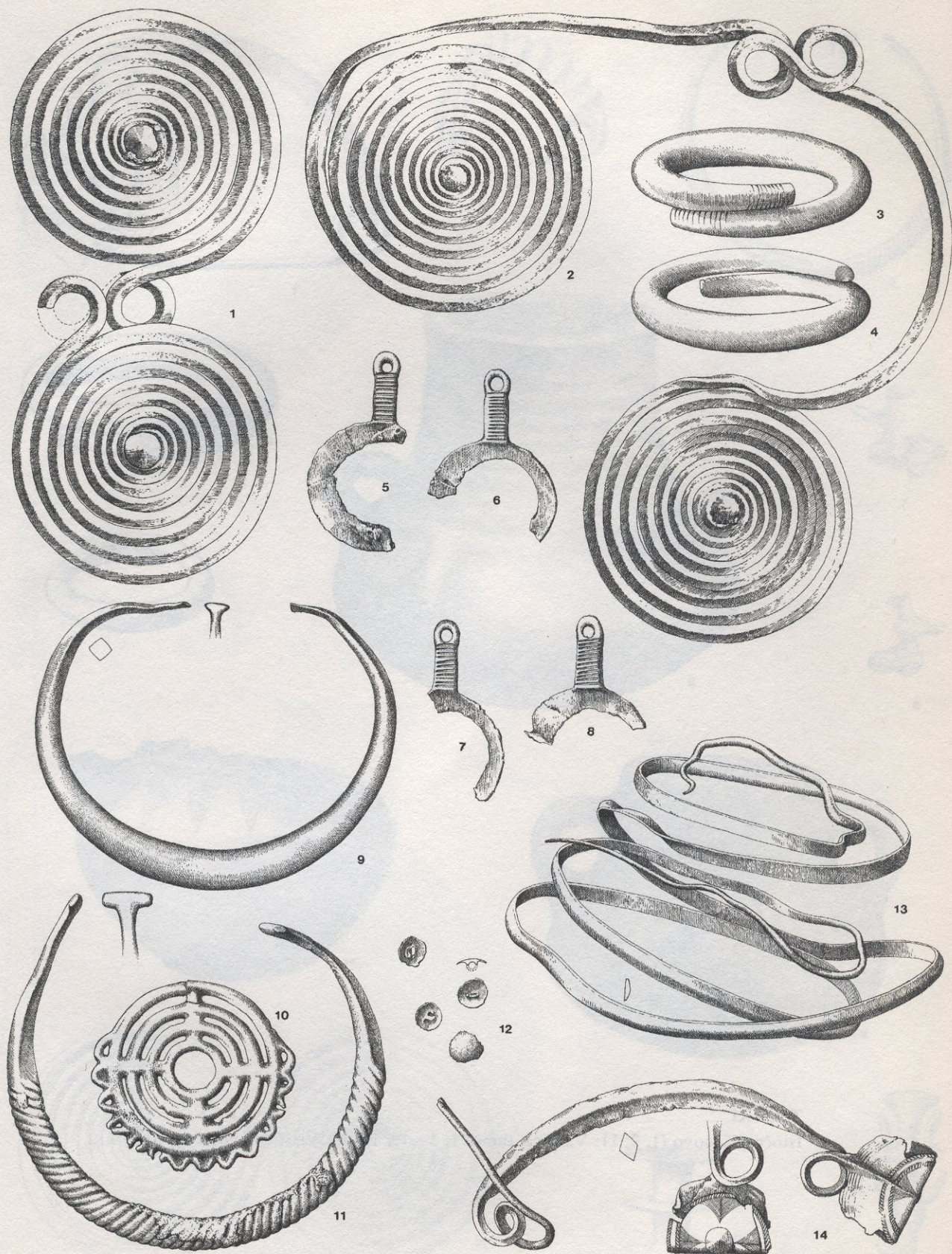


Pomoravska grupa Rača—Ljuljaci (Pećine kod Kostolca: 1, 5: grob 985; 2—4: grob 988; 6: grob 984; 7—14: grob 987); R — 1:2





Istočna Srbija (zlotska grupa — 1—6: grob iz Novog Sela, Dub.); Istočna Makedonija (7—18: nalaz iz Orešana); Pelagonija (19—21: Živojno; 22, 23: Visoči); R — 1 : 2

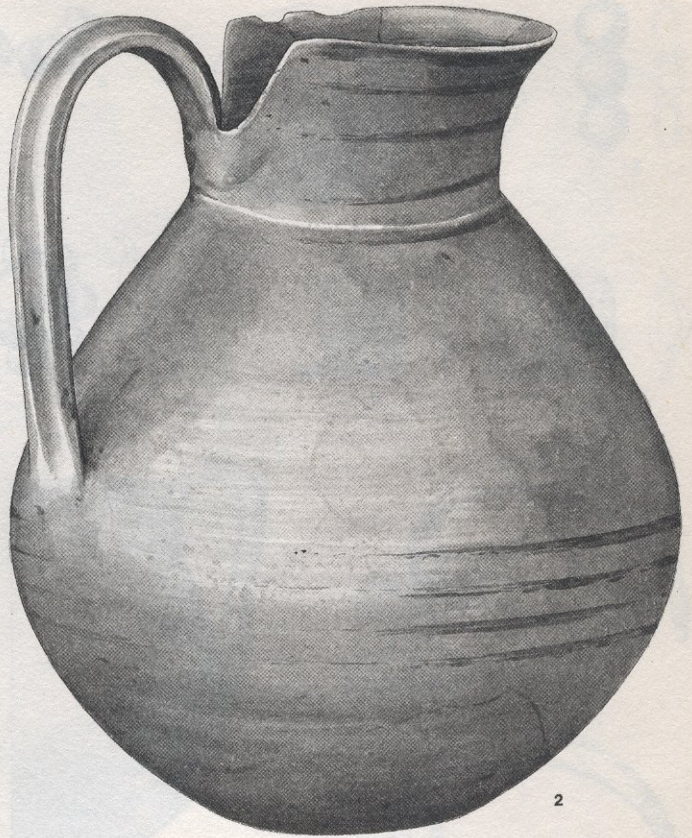




Istočno Kosovo (1, 2, 11: Vlačica, tumul 1; 3—10, 12, 13: Vlačica, tumul 2); R — 1:2



1



2



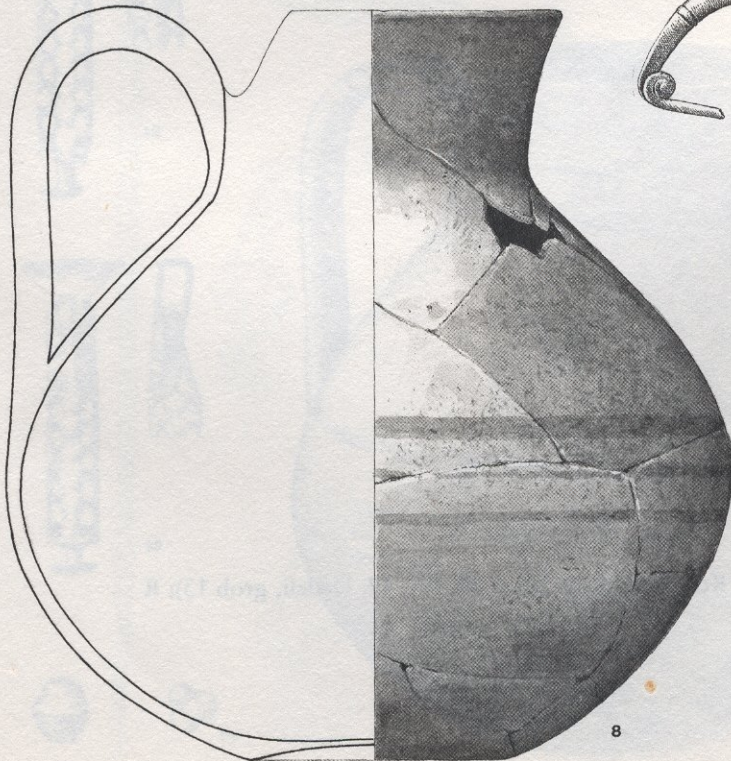
3



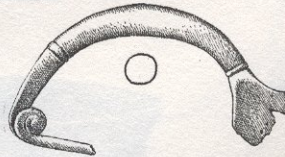
4



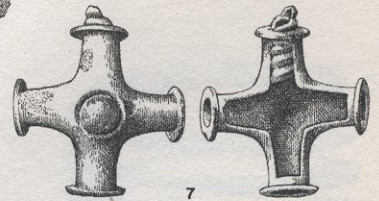
5



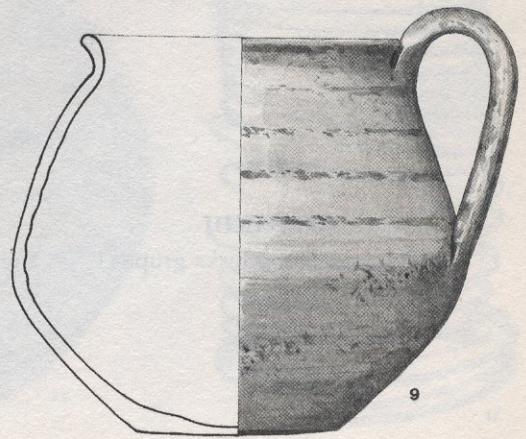
8



6



7

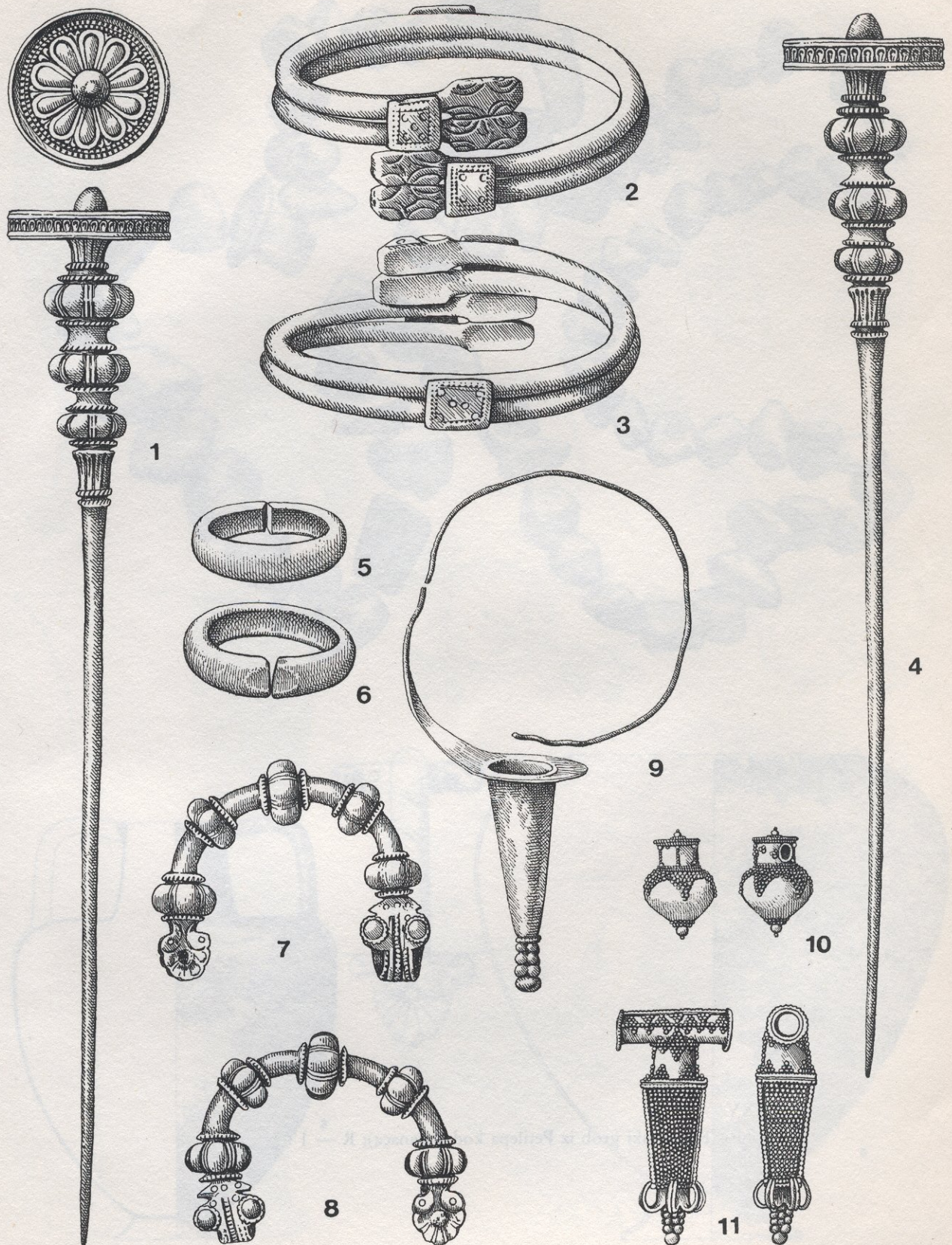


9

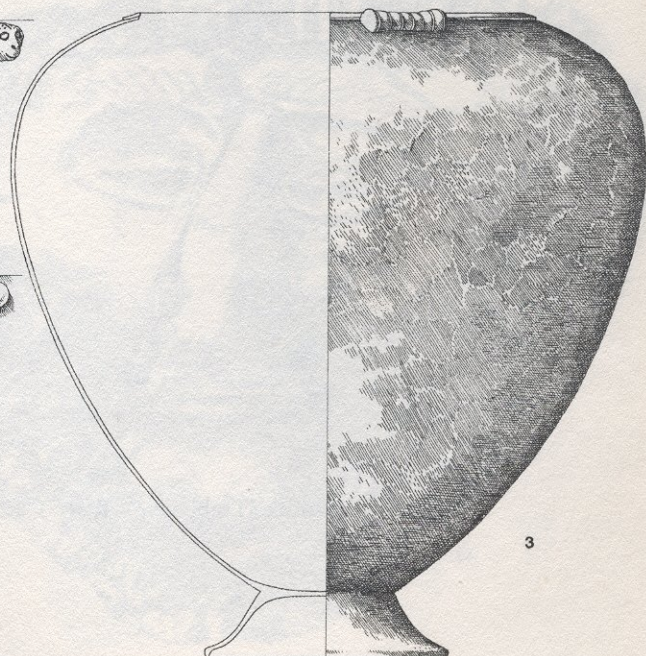
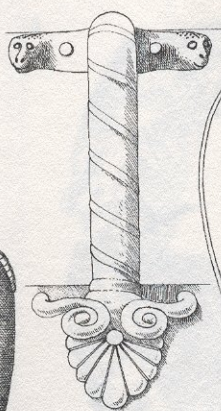
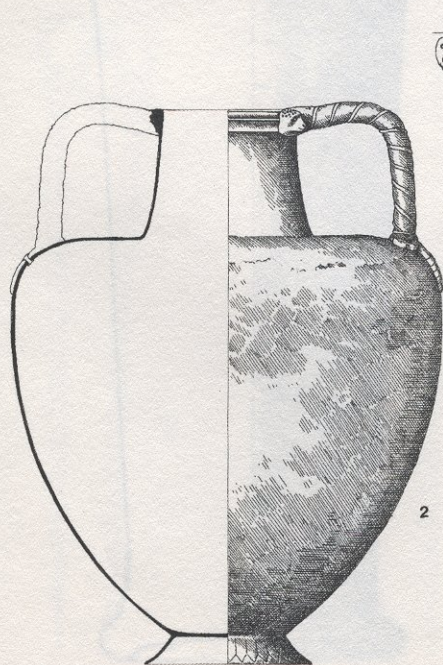
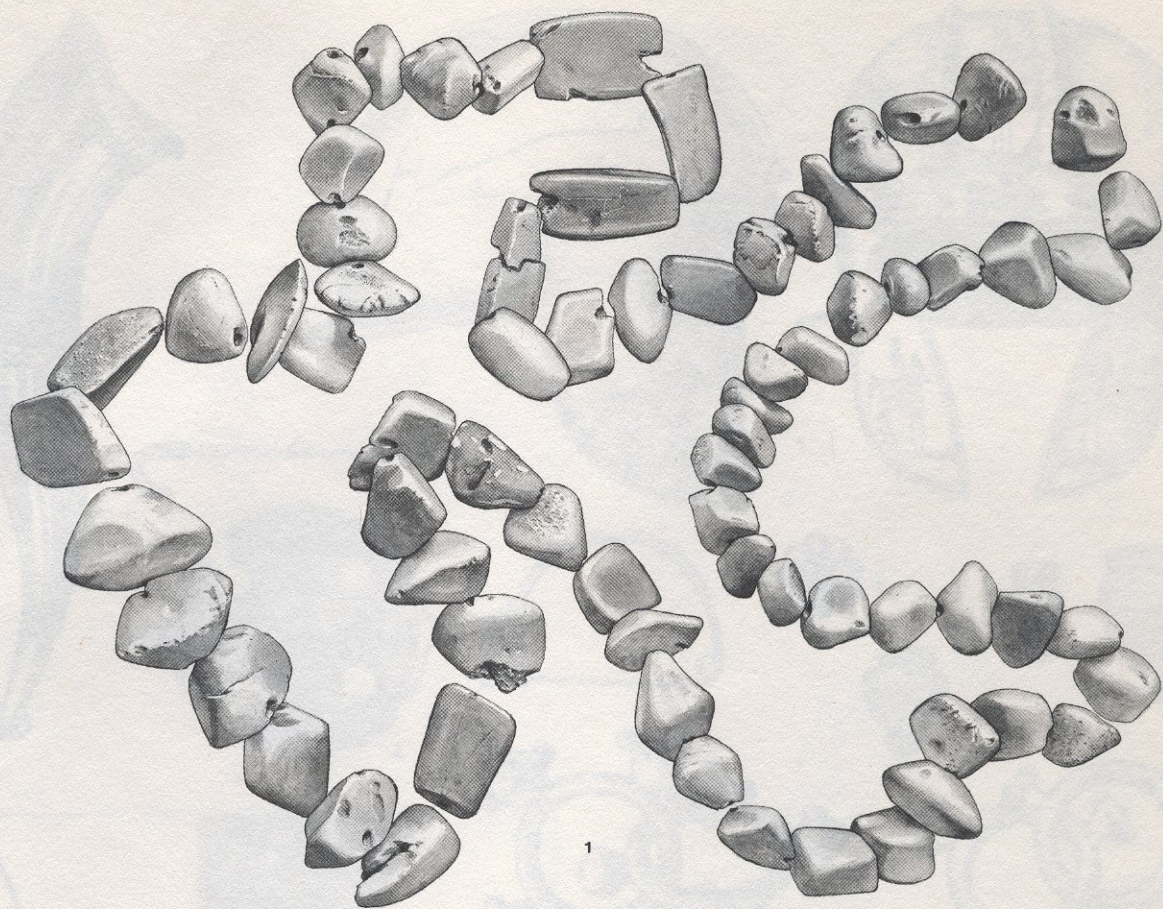
Devdelijska grupa (Suva Reka, Devdelija — 1—7: grob 25; 8, 9: grob 33); R — 1:2

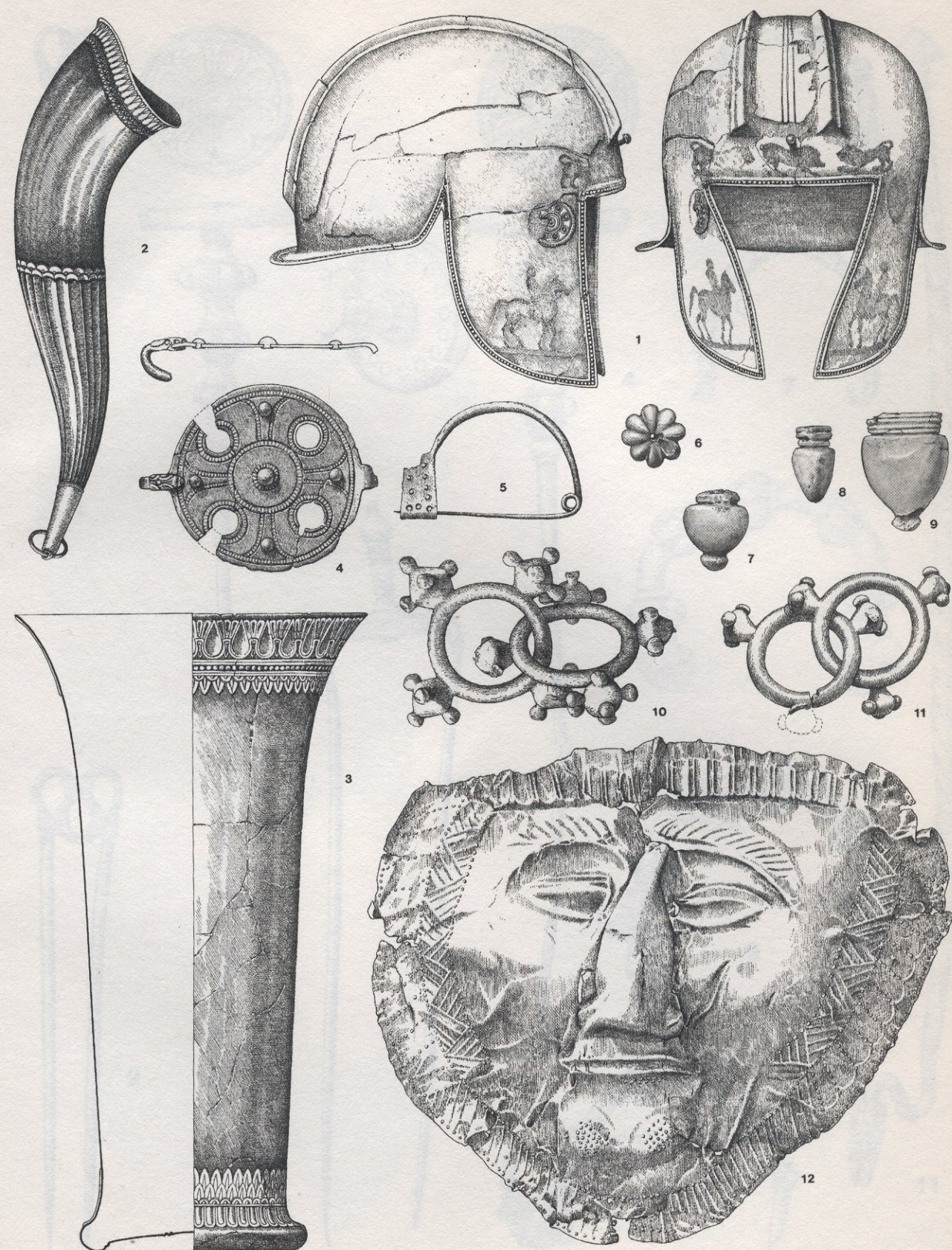


Devdelijska grupa (1—9: Suva Reka, Devdelija, grob 33; 10—17: Dedeli, grob 13); R
1:2

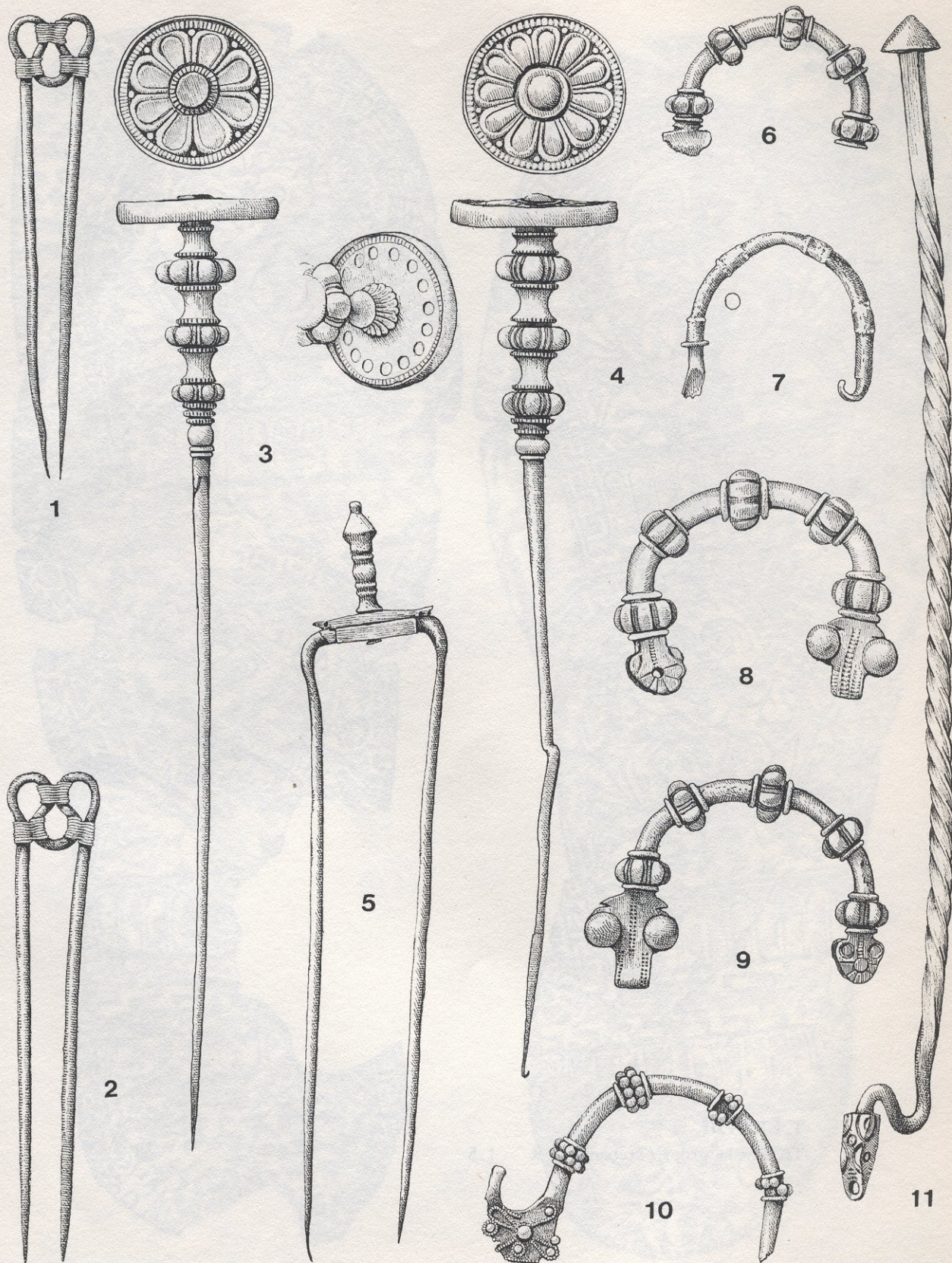


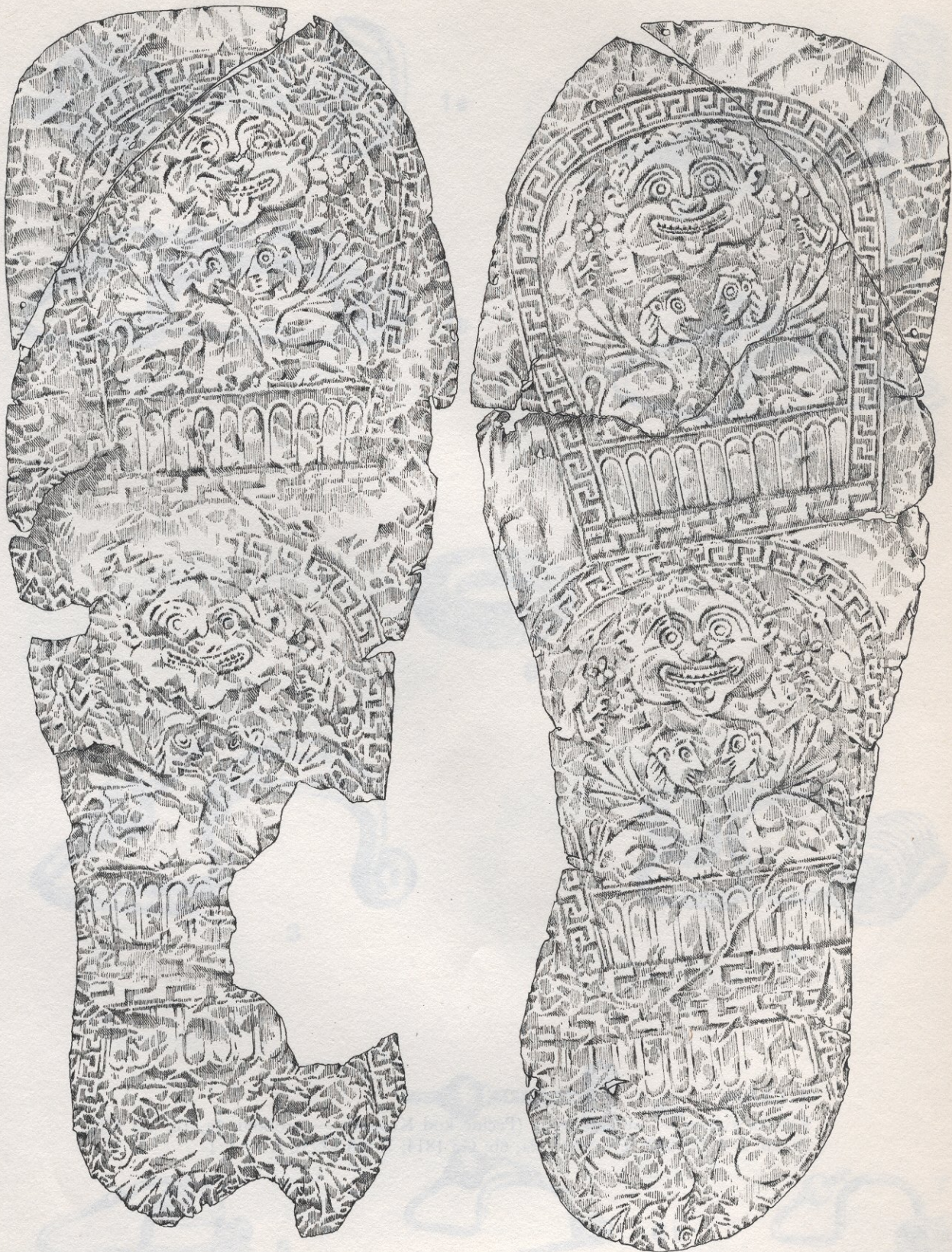
Pelagonija (Kneževski grob iz Petilepa kod Beranaca); R — 1 : 1

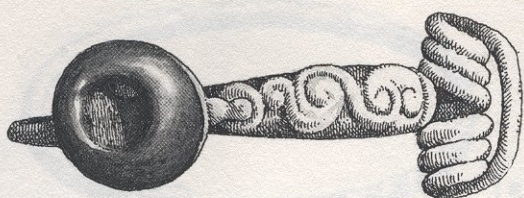




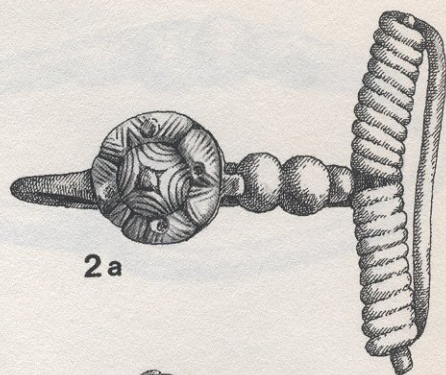
Trebeniška grupa (Trebenište); R — 1 : 2



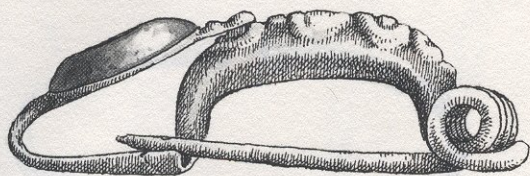




1a



2a



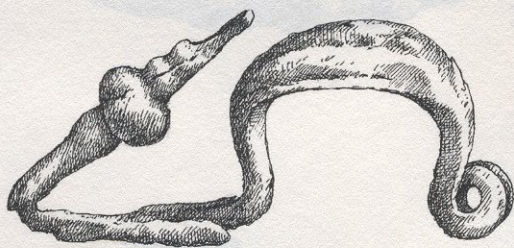
1b



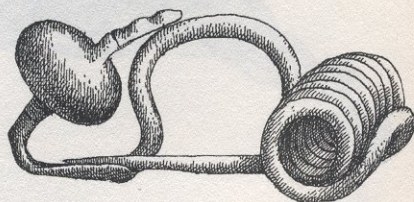
2b



8



3



4



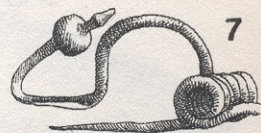
5



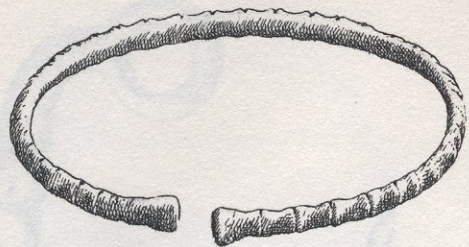
6a



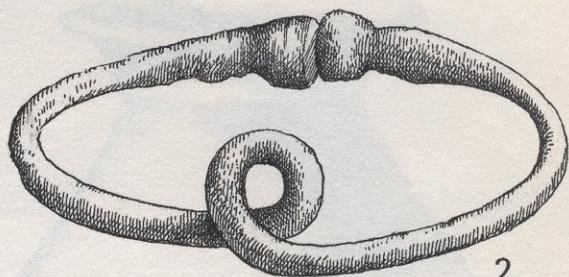
6b



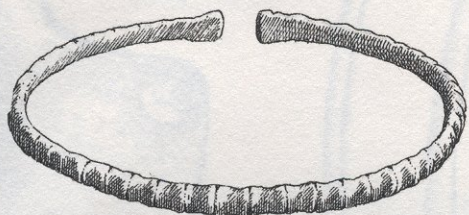
7



1a



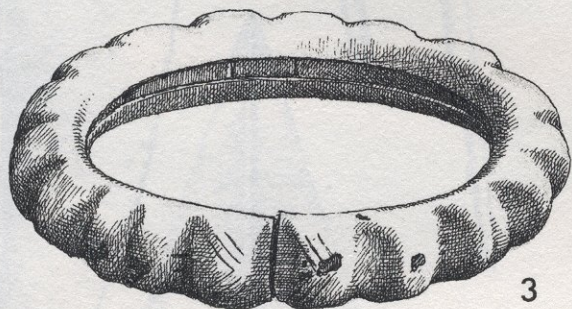
2



1b



4



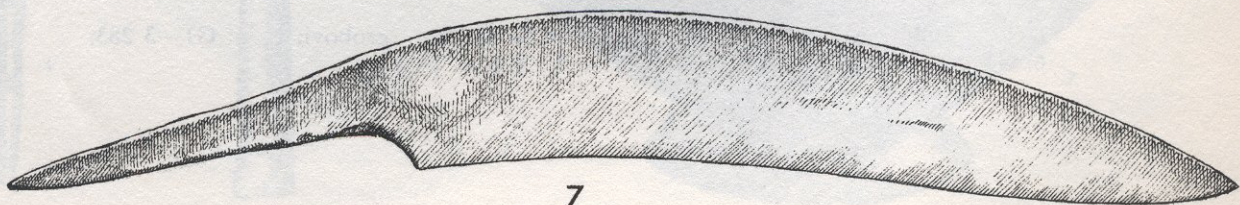
3



5



6



7

Keltska kultura — istočna grupa (Pećine kod Kostolca — grobovi: 1a, 1b, 2: G3 1201; 3: G 1—3 356; 4: G3 996; 5: G3 991; 6: G1—3 378; 7: G1—3 284); R — 1:1



Keltska kultura — istočna grupa (Pećine kod Kostolca — grobovi: 1—5: G1—3 283; 6: G3 982; 7: G1—3 457); R — 1—5, 7 = 1 : 2; 6 = 1 : 4



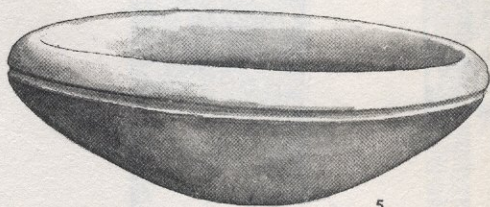
1



2



3



5



4



6



8

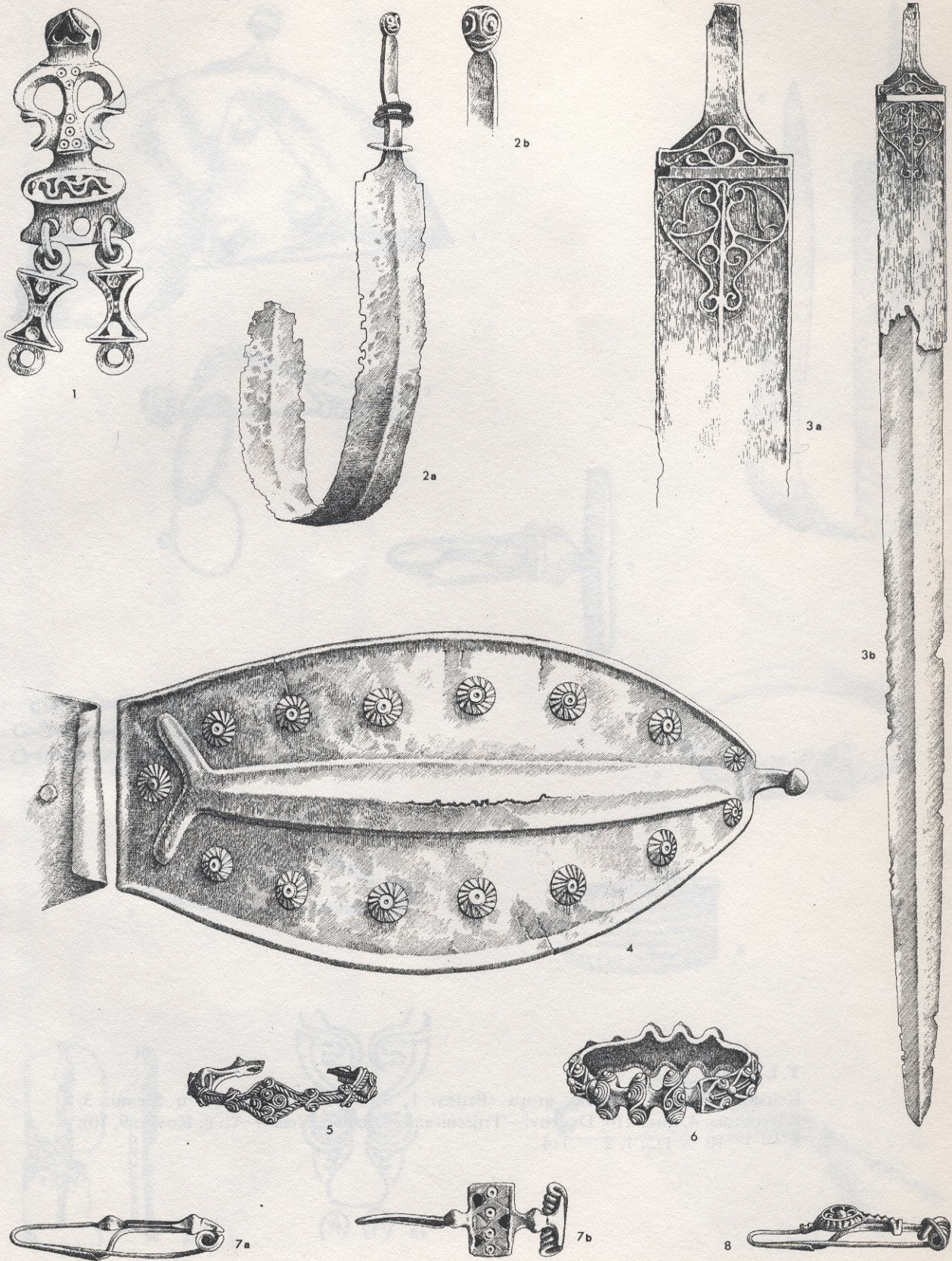


7

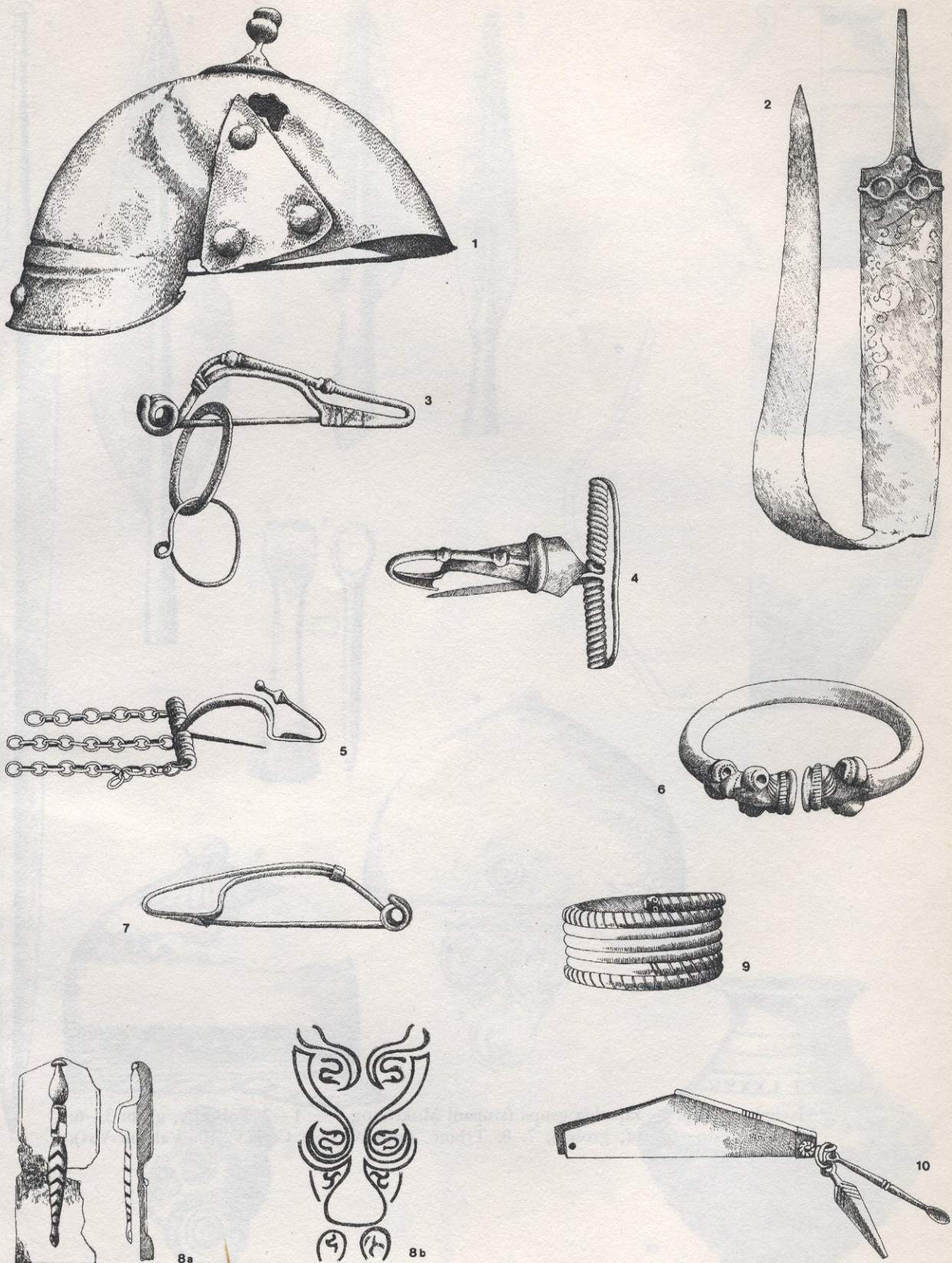


9

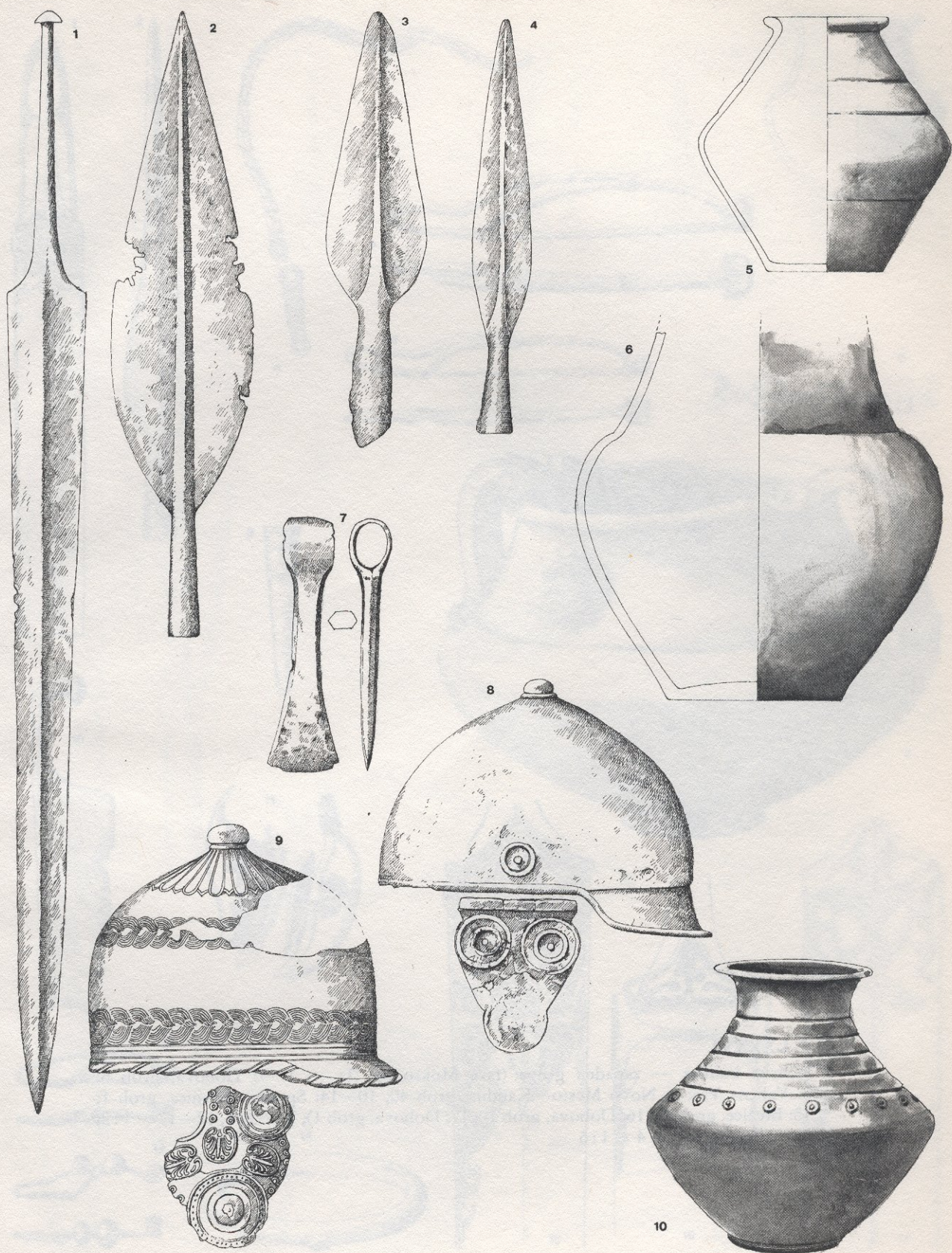
Keltska kultura — istočna grupa (Pećine kod Kostolca — grobovi: 1: G3 294; 2: G1—3 268; 3, 4: G3 996; 5: G1—3 283; 6, 7: G1—3 284; 8: G1—3 268; 9: G3 993); R — 1, 6, 7, 9 = 1 : 2; 2—5, 8 = 1 : 5



Kienka kultura — istočna grupa (Novi Banovci: 1; Kupinovo: 2a, 2b, 3a, 3b, 5, 8; Jarak: 4; Vukovar: 6; Boljevc: 7a, 7b); R — 1, 2b, 3a, 4—8 = 1:2; 2a, 3b = 1:4



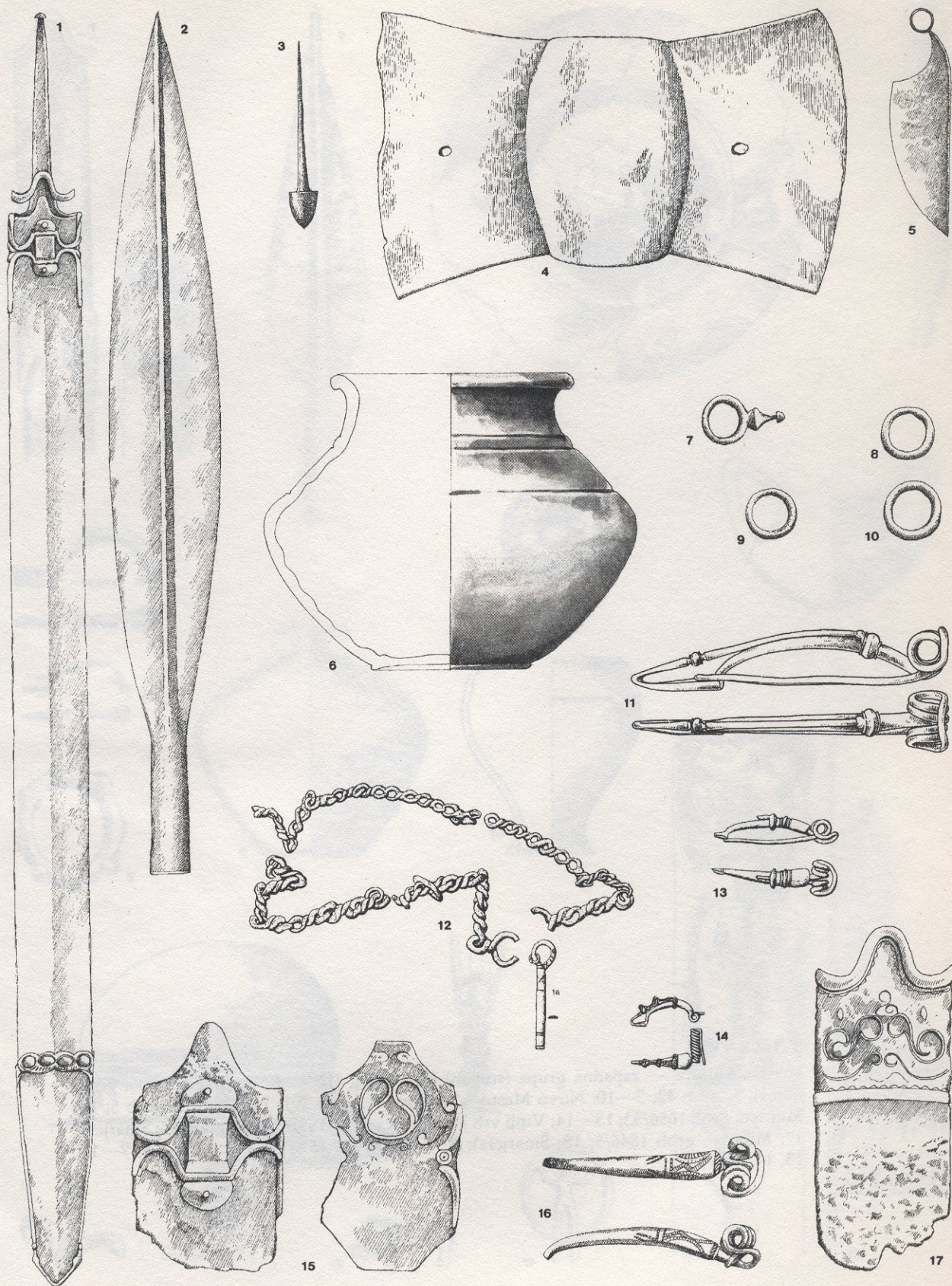
Keltska kultura — istočna grupa (Batina: 1, 3; nepoznato nalazište u Sreму: 3; Karaburma: 4, grob 110; Dvorovi—Triješnica: 5, 7, 8a, 8b; Vršac—At: 6; Kovin: 9, 10); R — 3—10 — 1:2; 1, 2 — 1:4



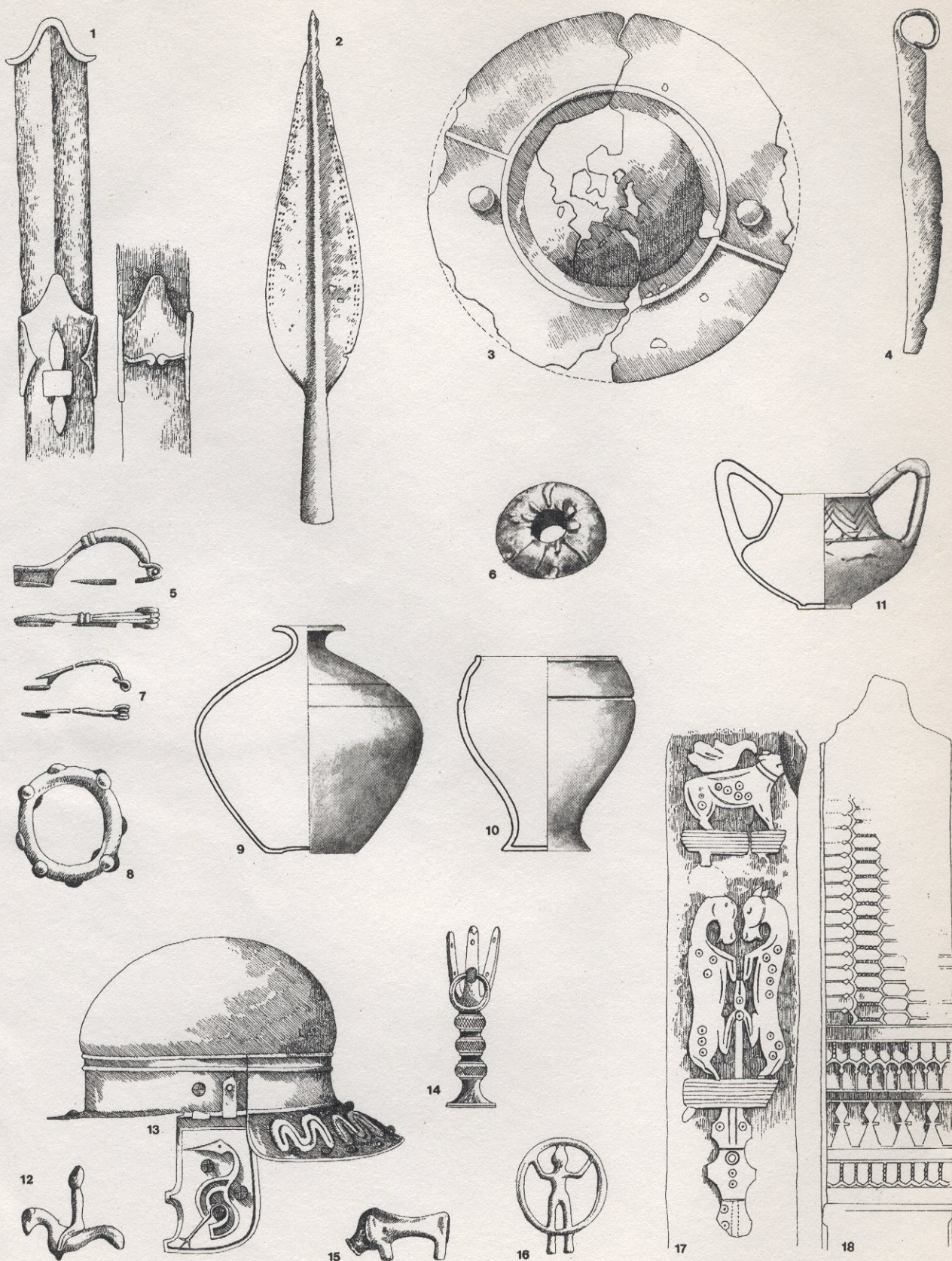
Keltska kultura — zapadna grupa (stupanj Mokronog I — 1—2: Pobrežje, grob; 3—6: Novo Mesto—Marof, grob 6; 7, 8: Trbinc, grob; 9: Bela Cerkev; 10: Valična Vas);
R — 1—10 = 1:4



Keltska kultura — zapadna grupa (faza Mokronog IIa — 1—7: Dobova, grob 6; 8: Valična Vas; 9: Novo Mesto—Kandija, grob 40; 10—14: Spodnja Slivnica, grob 1; 15: Brežice, grob 47; 16: Dobova, grob 10; 17: Dobova, grob 1); R — 5, 6, 12—17 = 1:2; 1—3, 7—11 = 1:4; 4 = 1:6



Keltska kultura — zapadna grupa (faza Mokronog IIb — 1—11: Dobova, grob 23; 12—14: Dobova, grob 26; 15: Valična Vas; 16: Ptuj; 17: Veliko Mraševo, grob 1); R — 11, 15—17 = 1:2; 2—10, 12—14 = 1:4; 1 = 1:5.



Keltska kultura — zapadna grupa (stupanj Mokronog III — 1—4: Magdalenska gora, humak 5, grob 42; 5—10: Novo Mesto—Beletov vrt, grob 201; 11: Mengeš, grob 5; 12: Mihovo, grob 1656/33; 13—14: Vinji vrh kod Bele Cerkve; 15: Brinjeva gora; 16: Šmarjeta; 17: Mihovo, grob 1846/5; 18: Šmarjeta); R — 5—8, 12, 15—18 = 1 : 2; 1—4, 9—11, 13, 14 = 1 : 4