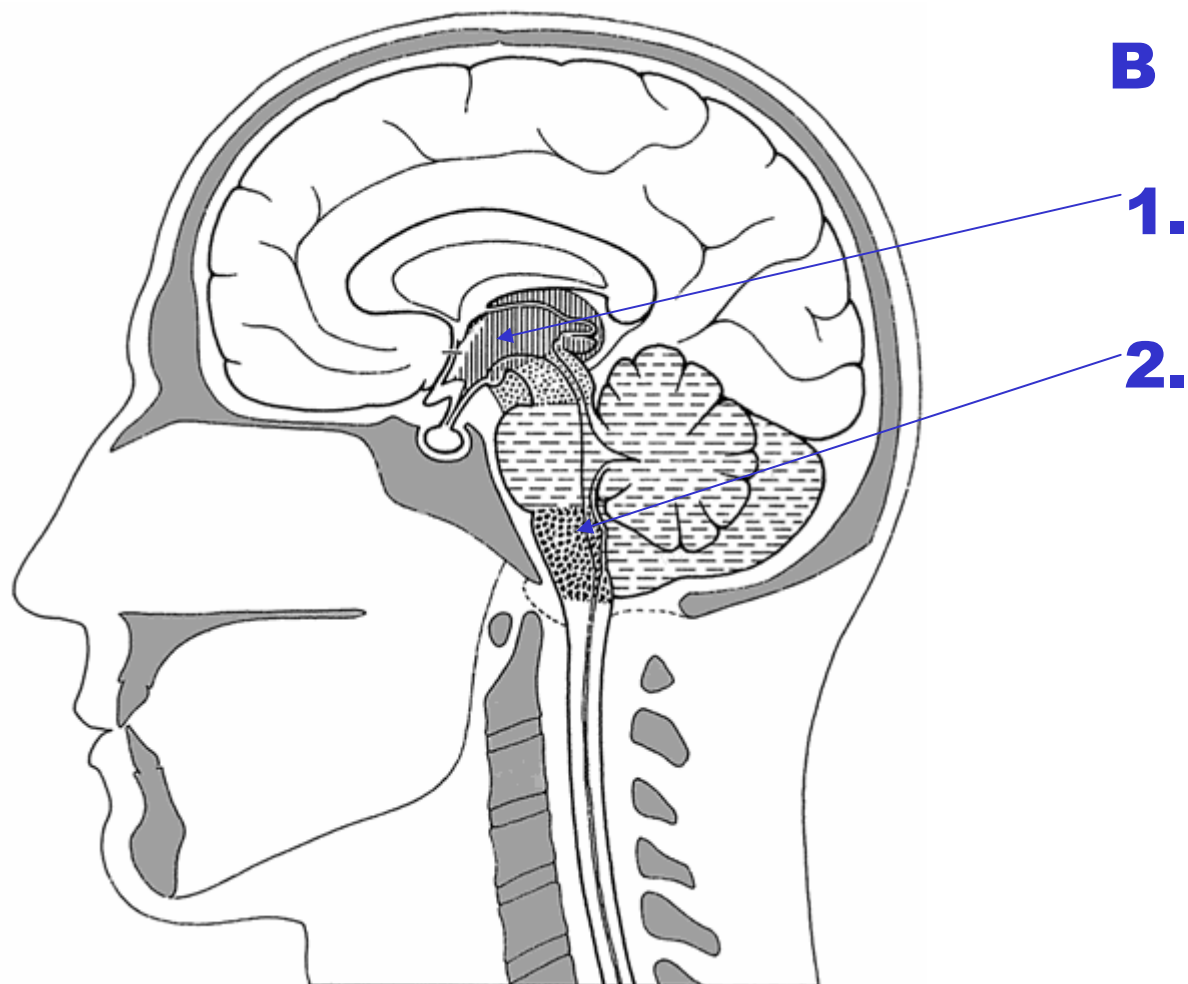
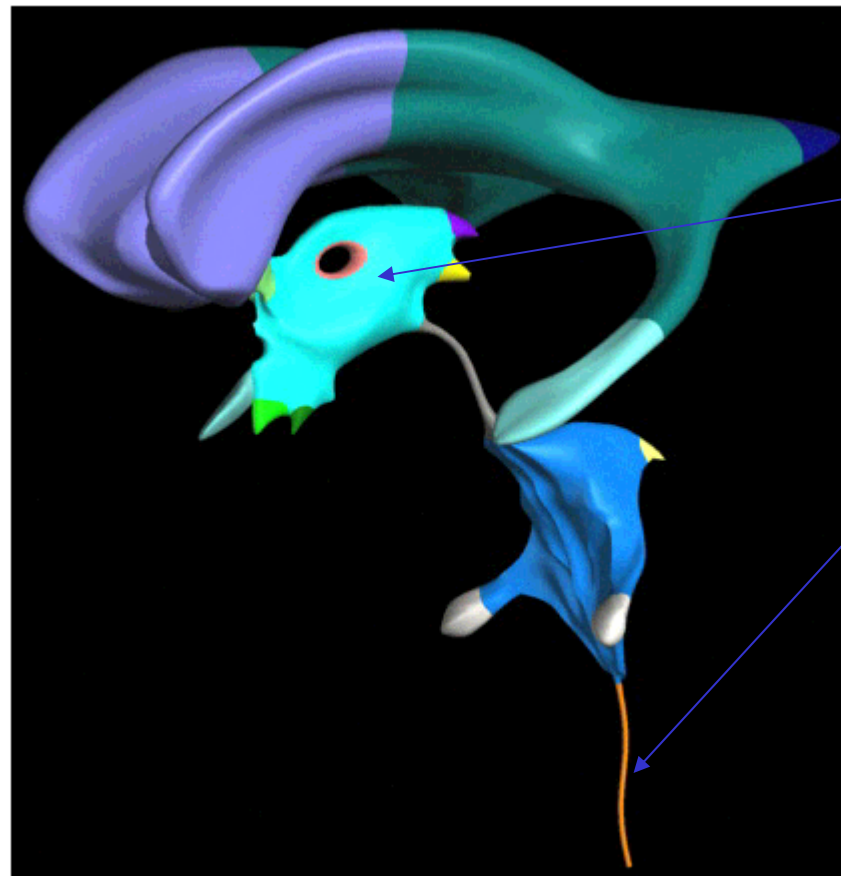


B - grupa

OPCA MORFOLOGIJA

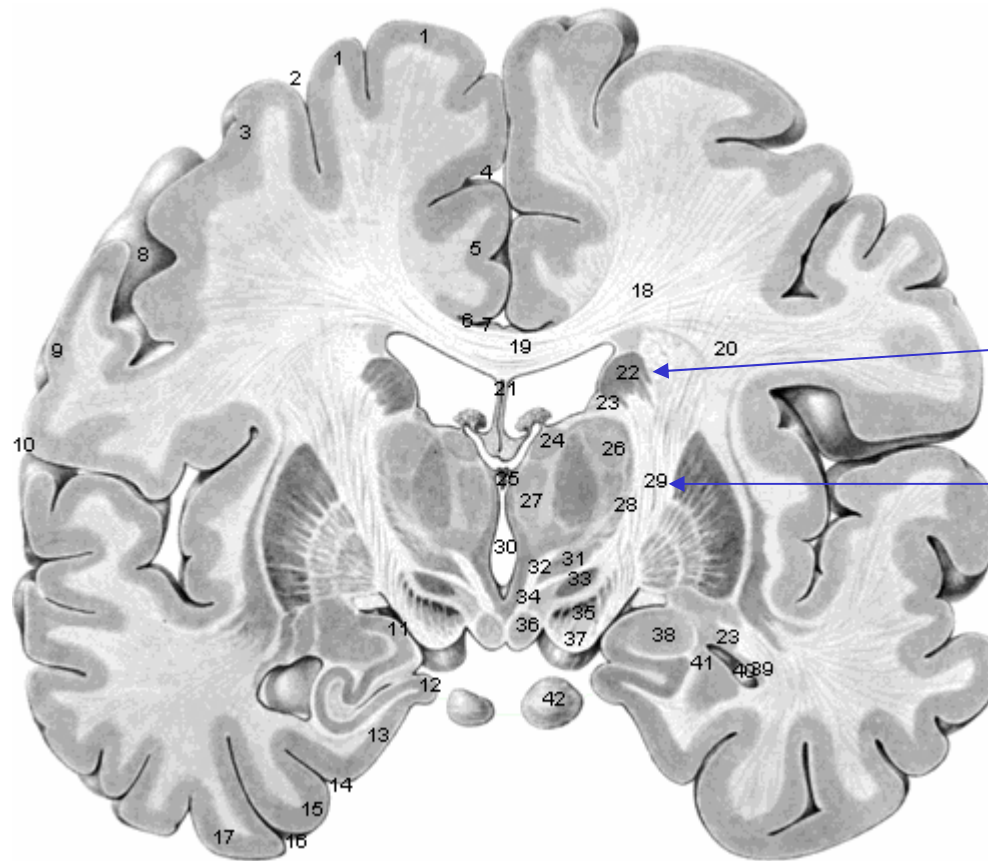
KOJEM MOŽDANOM MJEHURIĆU PRIPADA TVORBA





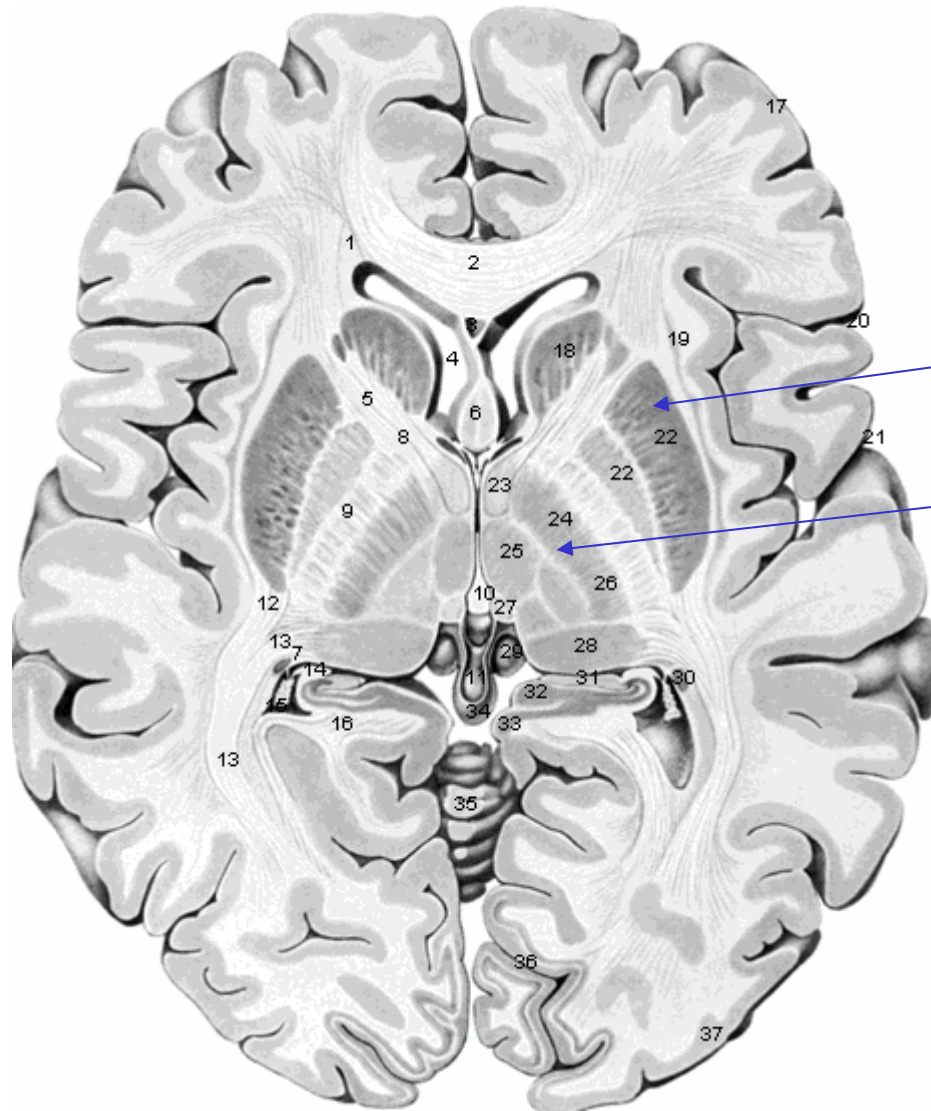
3.

4.



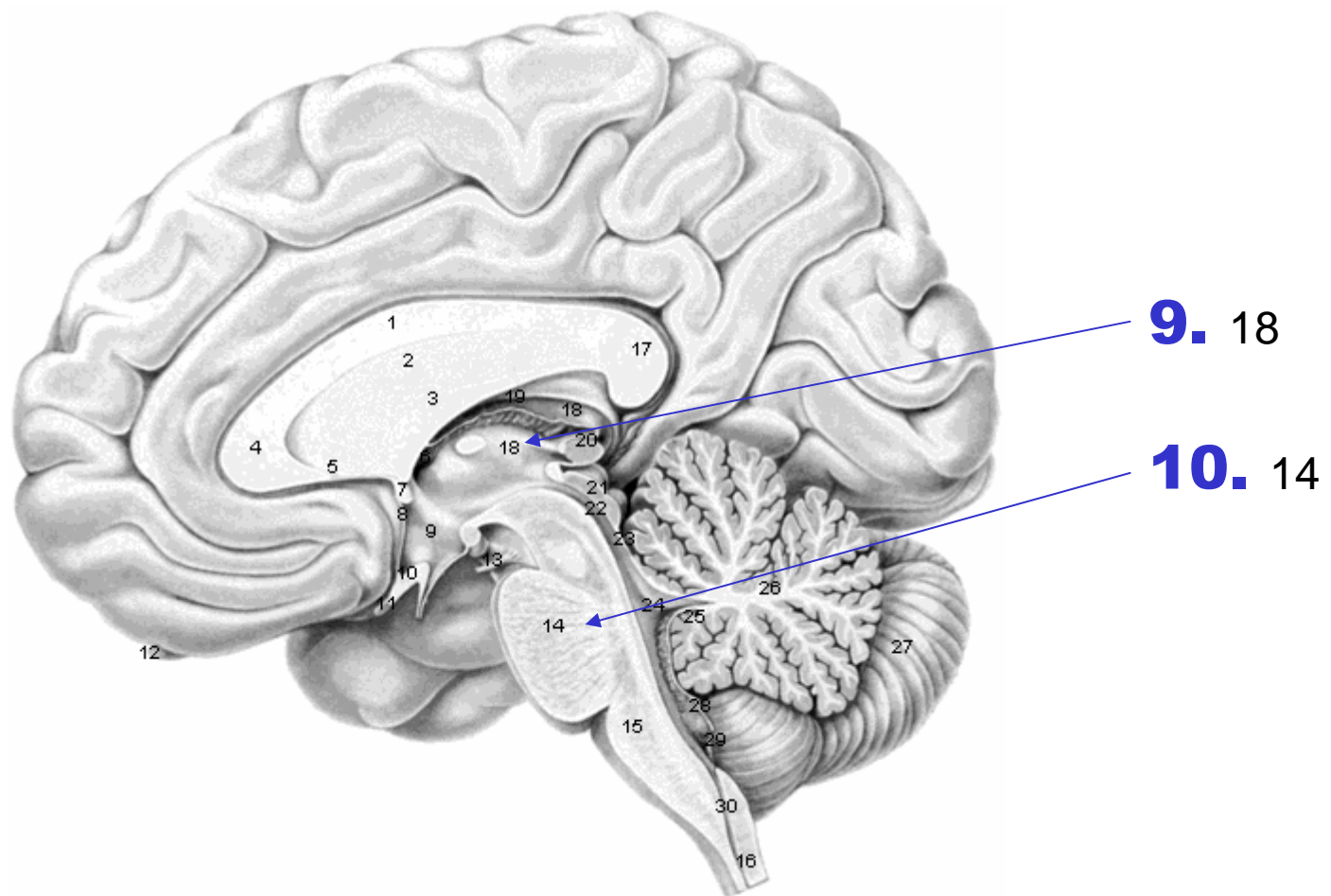
5. 22

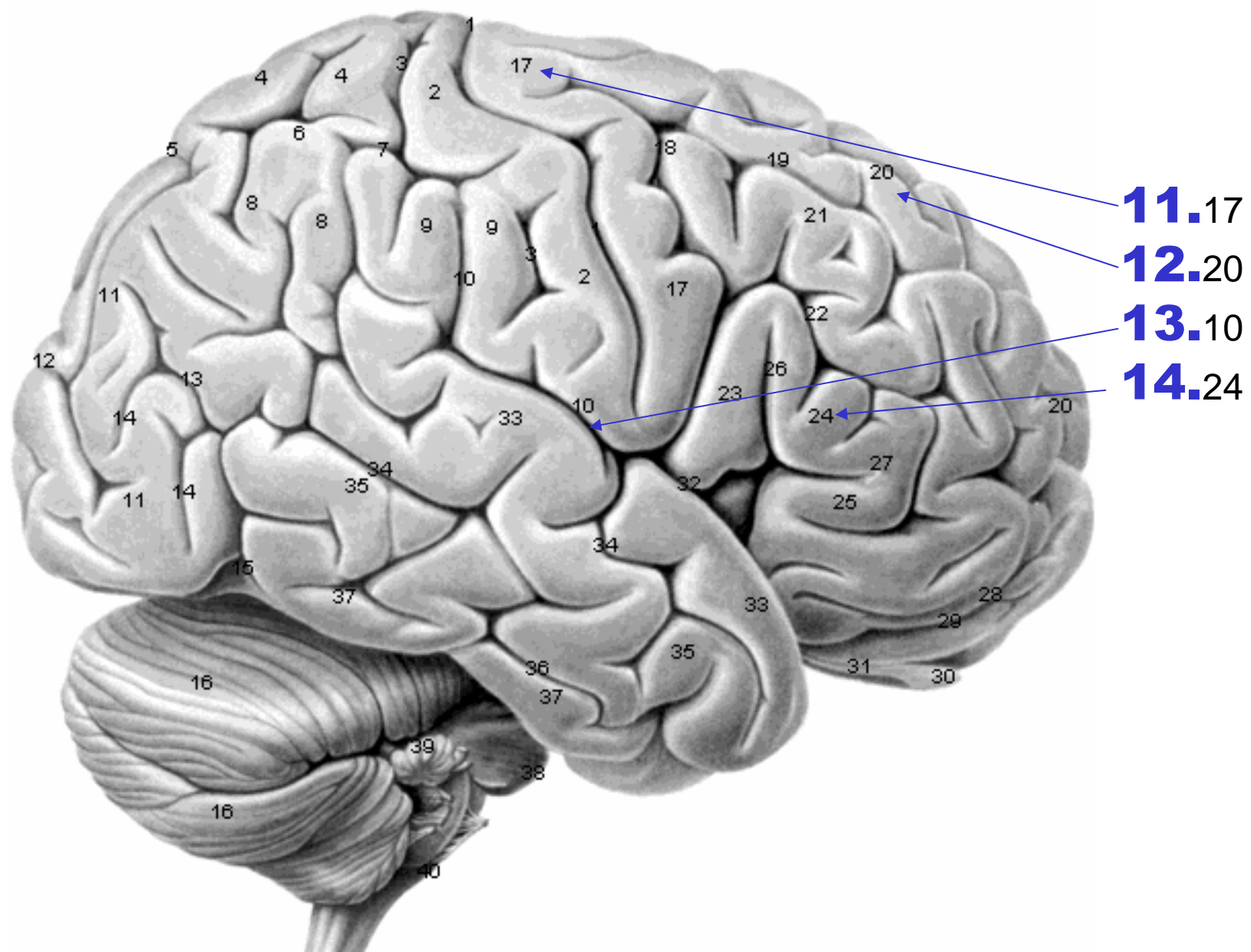
6. 29

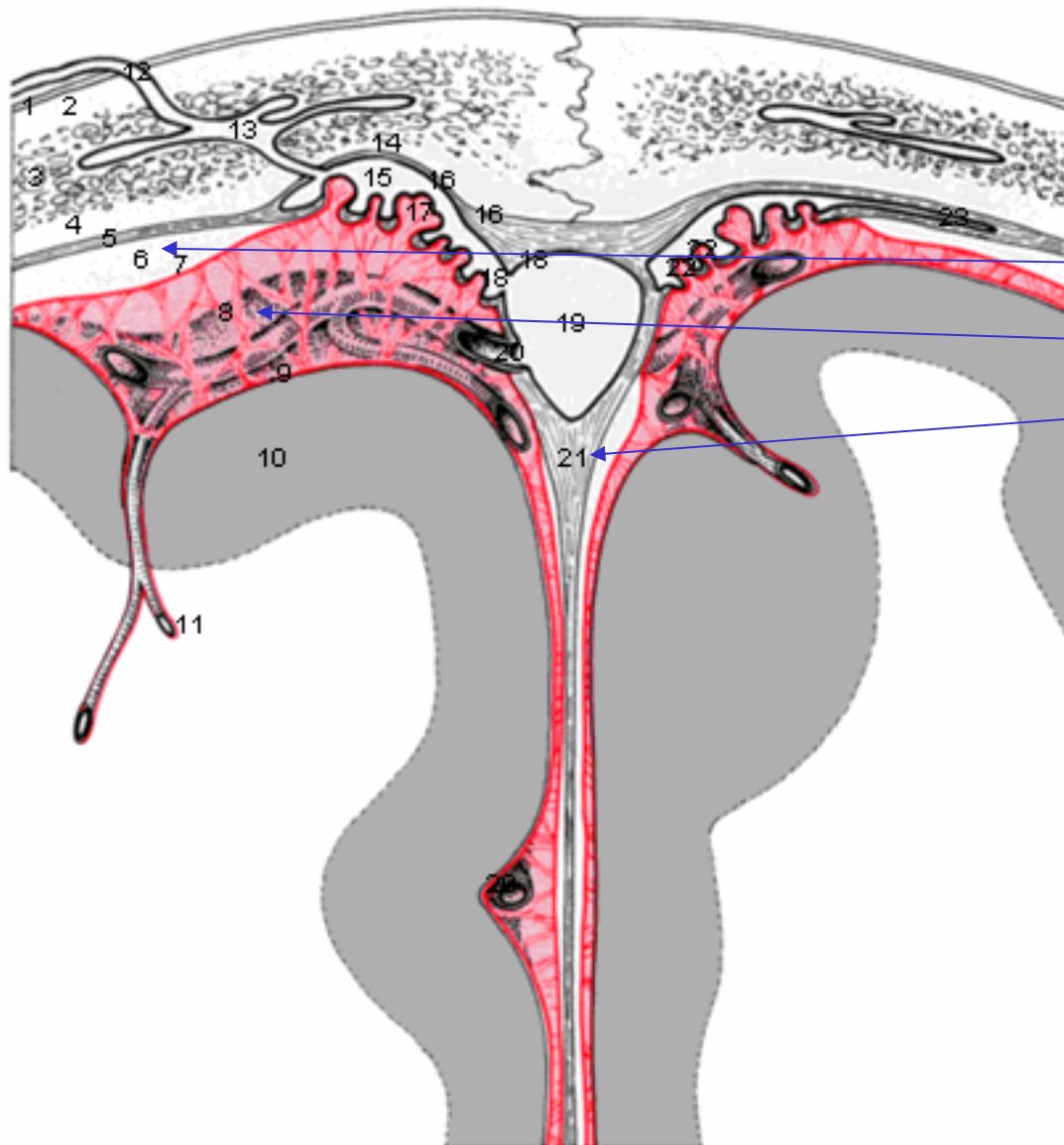


7. 22

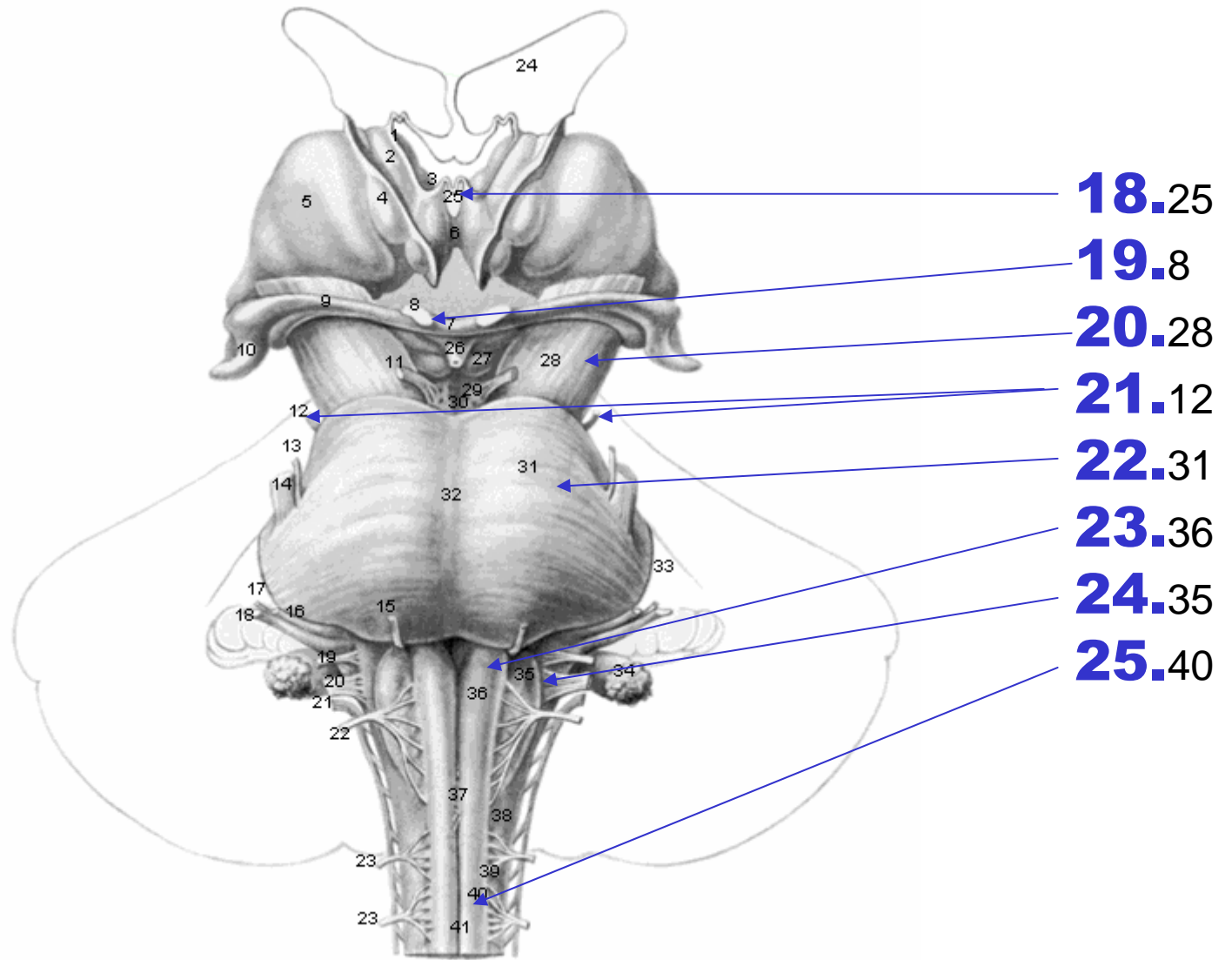
8. (24,25,26)



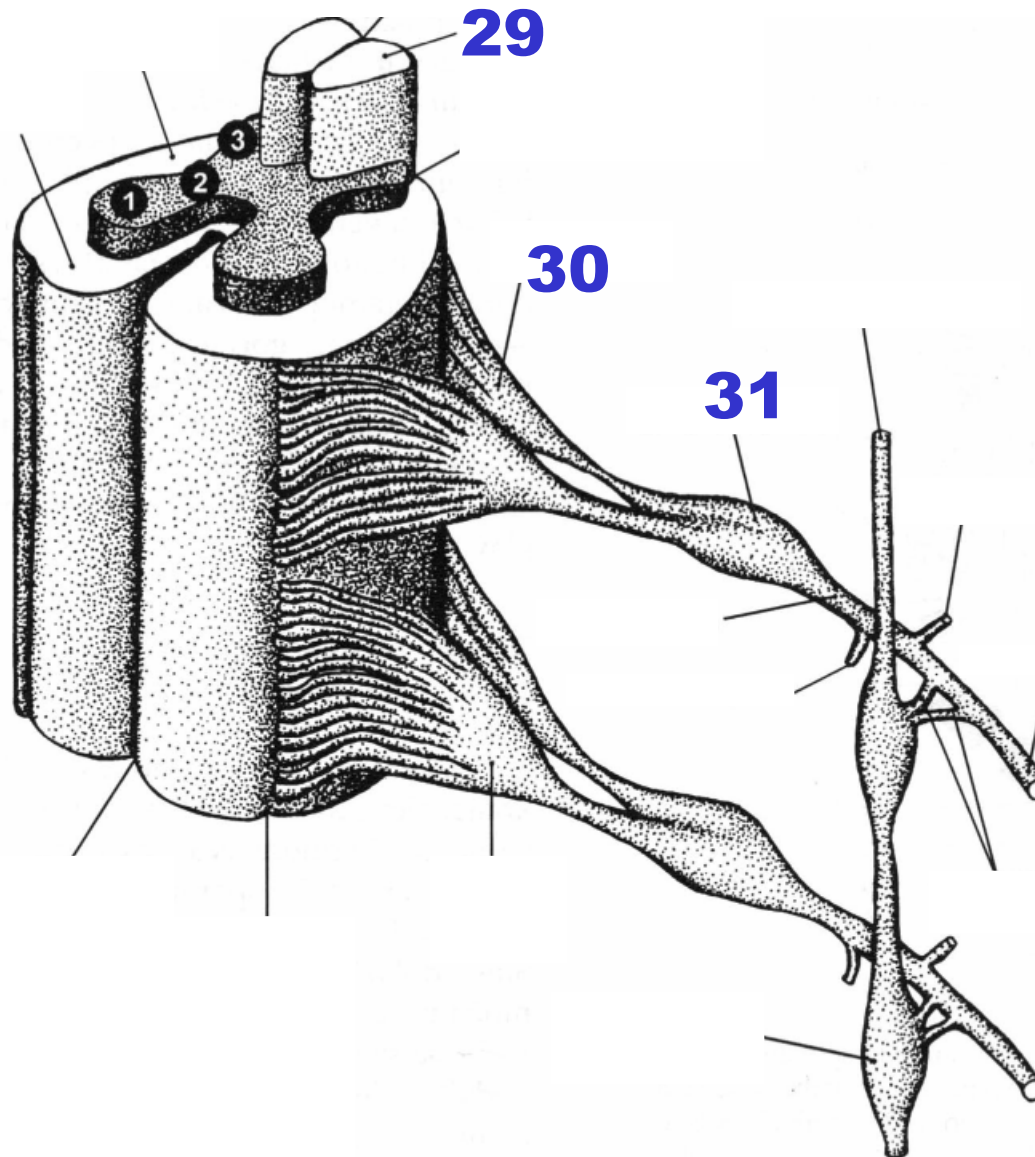




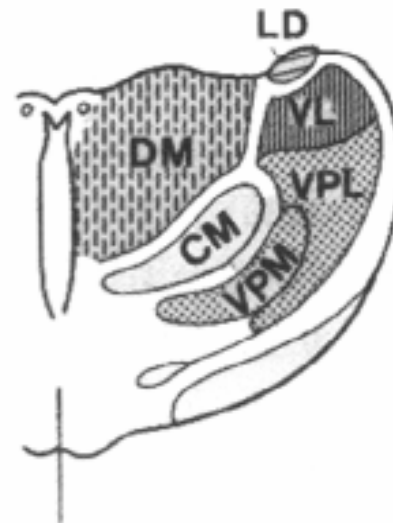
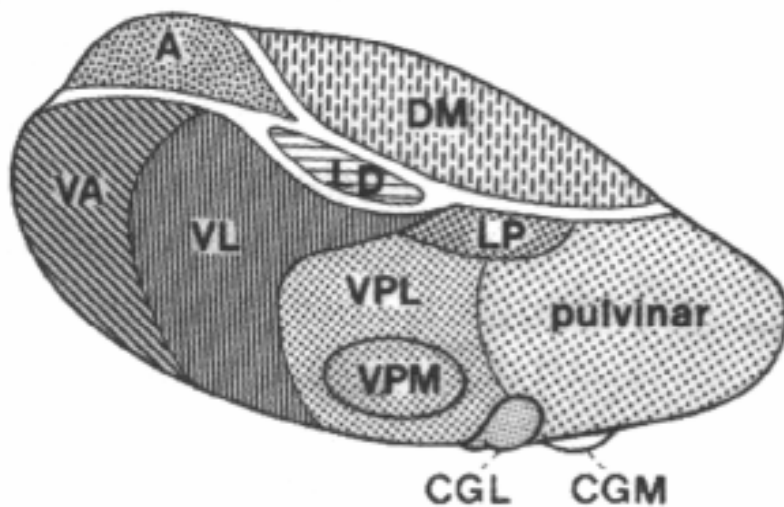
15.6
16.8
17.21



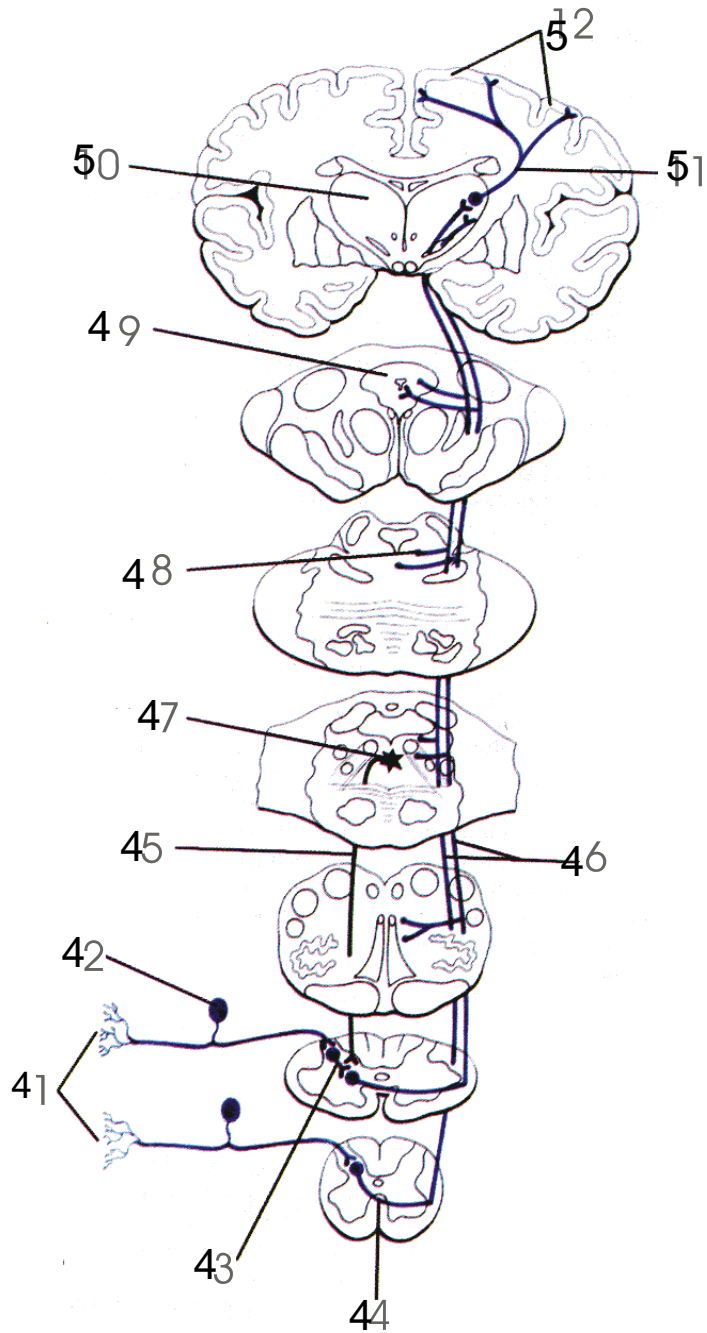
26 – 3; **27** – 1; **28** – 2



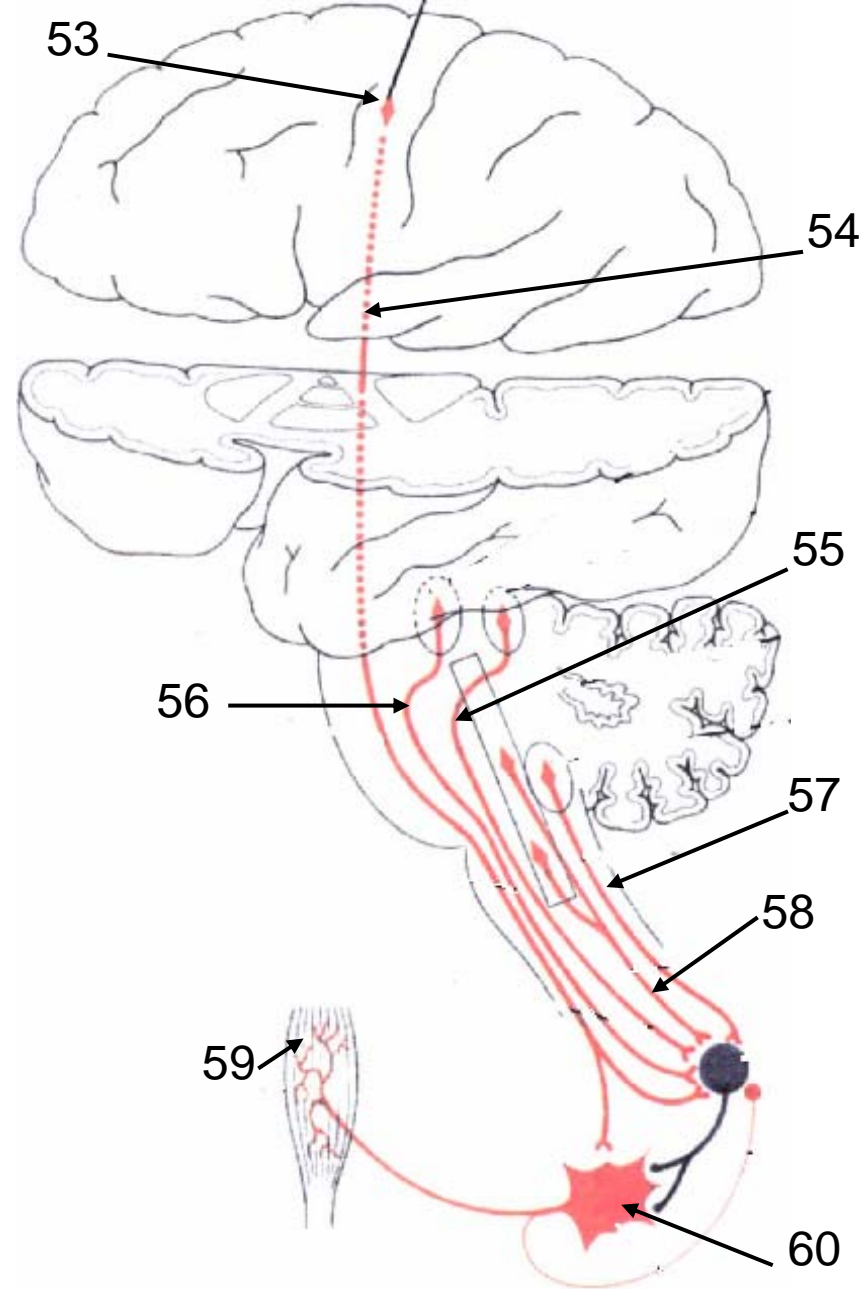
ŠTO OZNAČAVAJU KRATICE



32	CGL
33	CGM
34	LP
35	DM
36	A
37	VA
38	VL
39	VPL
40	VPM



ANTEROLATERALNI SPINOTALAMIČKI SUSTAV



SILAZNI MOTORNI PUTOVİ

