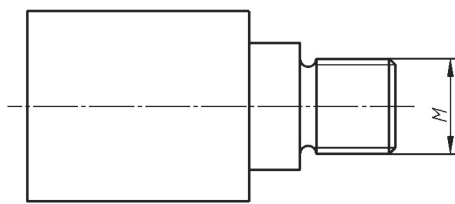
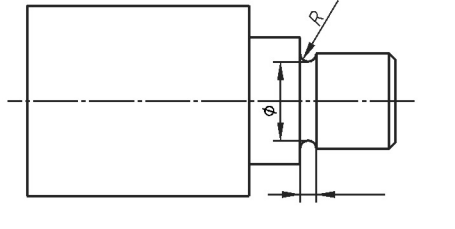
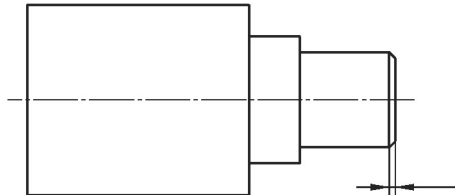
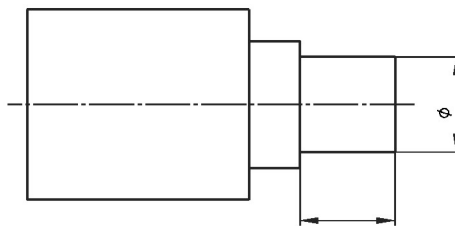
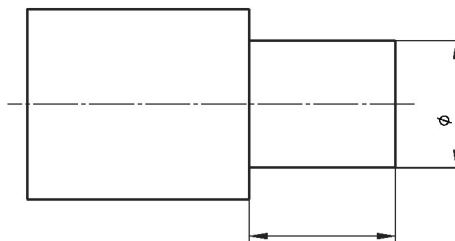
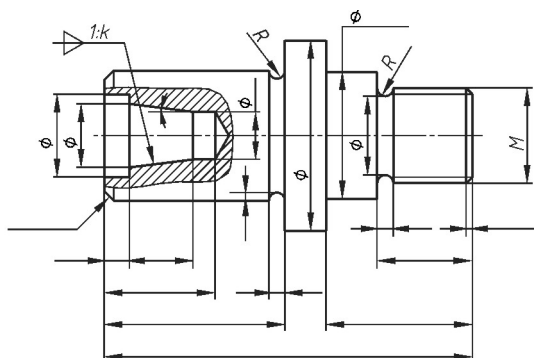
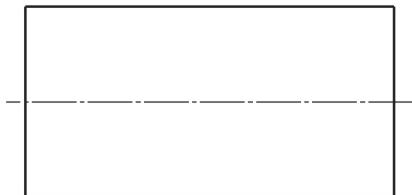
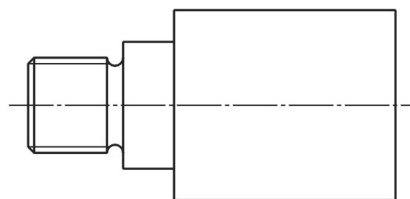
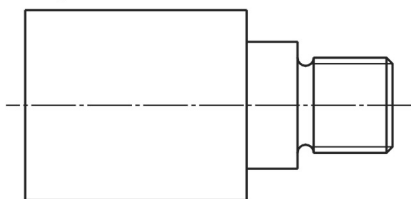
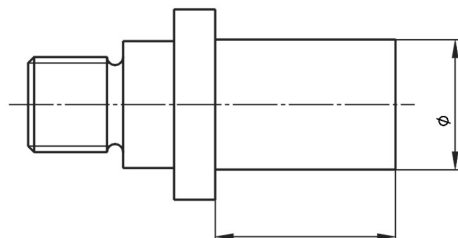
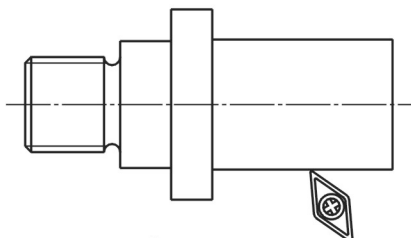
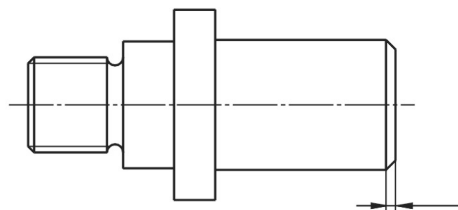
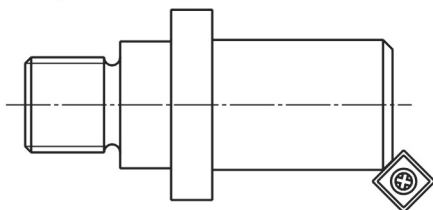
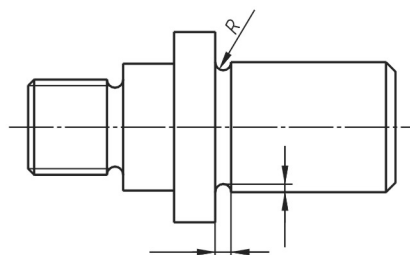
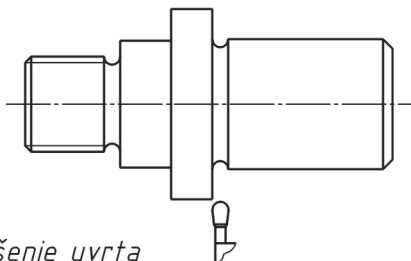
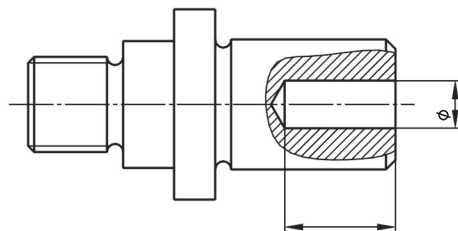
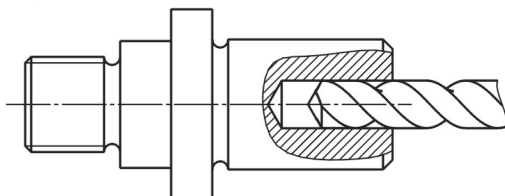
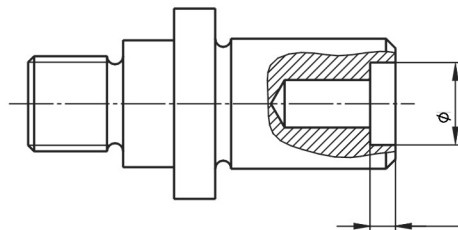
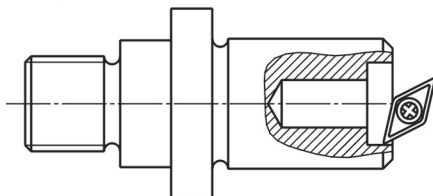
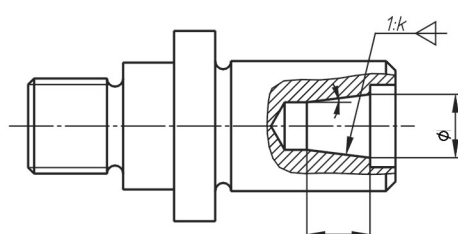
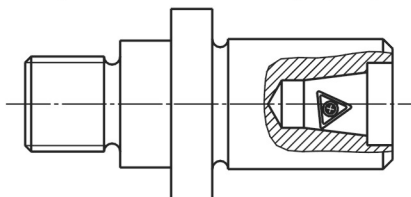
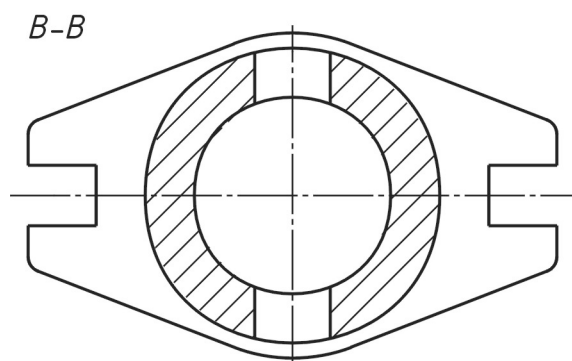
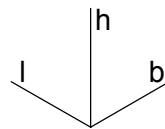
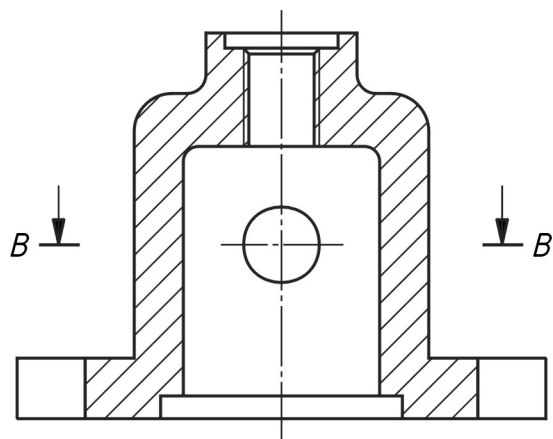


Osnovni materijal

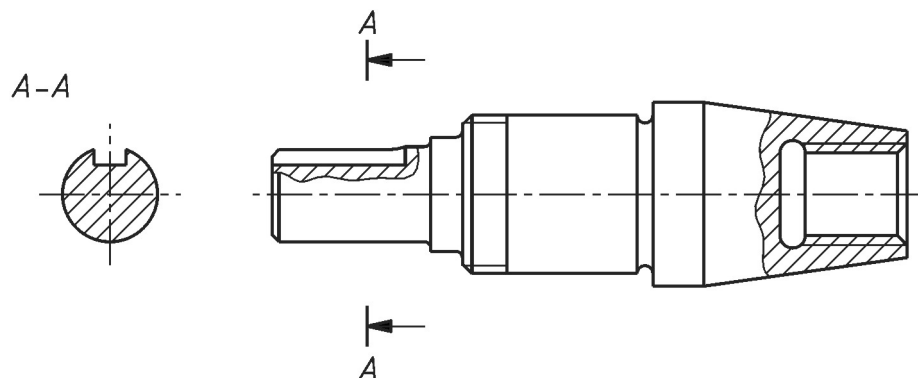


6. Okretanje obratka

7. Tokarenje cilindra

8. Tokarenje skošenja

9. Tokarenje ureza

10. Bušenje uvrta

11. Tokarenje upusta

12. Tokarenje konusa (brušenje po potrebi)


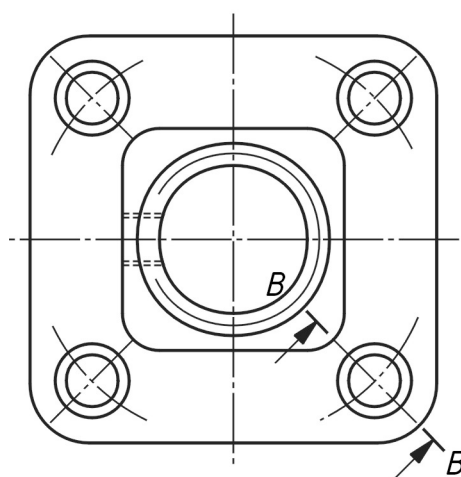
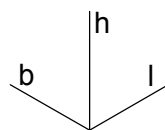
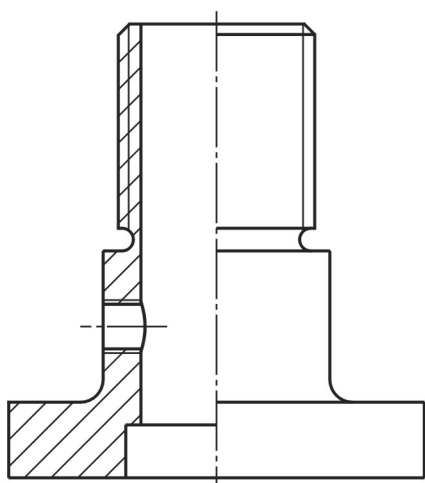
1. Strojni dio prikazan projekcijama N_{pr} i T_{pr} u mjerilu M1:2 treba kotirati (mjeriti i upisati kotne brojeve na mjernice). Nacrtajte isti strojni dio u izometriji (samo u pogledu) prema danom planu dimenzija u približnom mjerilu M 1:5.



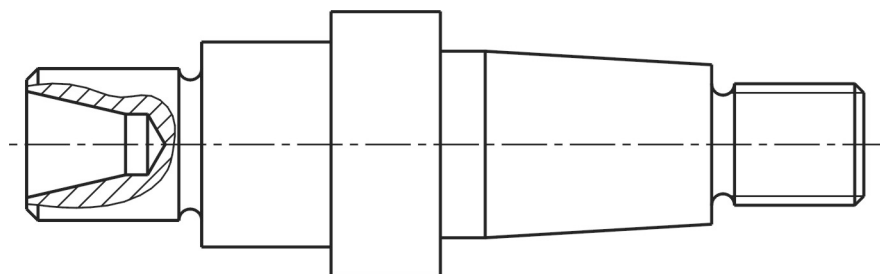
2. Kotirajte slijepim kotama (bez kotnih brojeva, ali navodeći oznake ϕ , R, M i sl.) vratilo, te unesite znakove obrade. Konus i cilindrična ploha s utorom za pero, fino su obrađene.



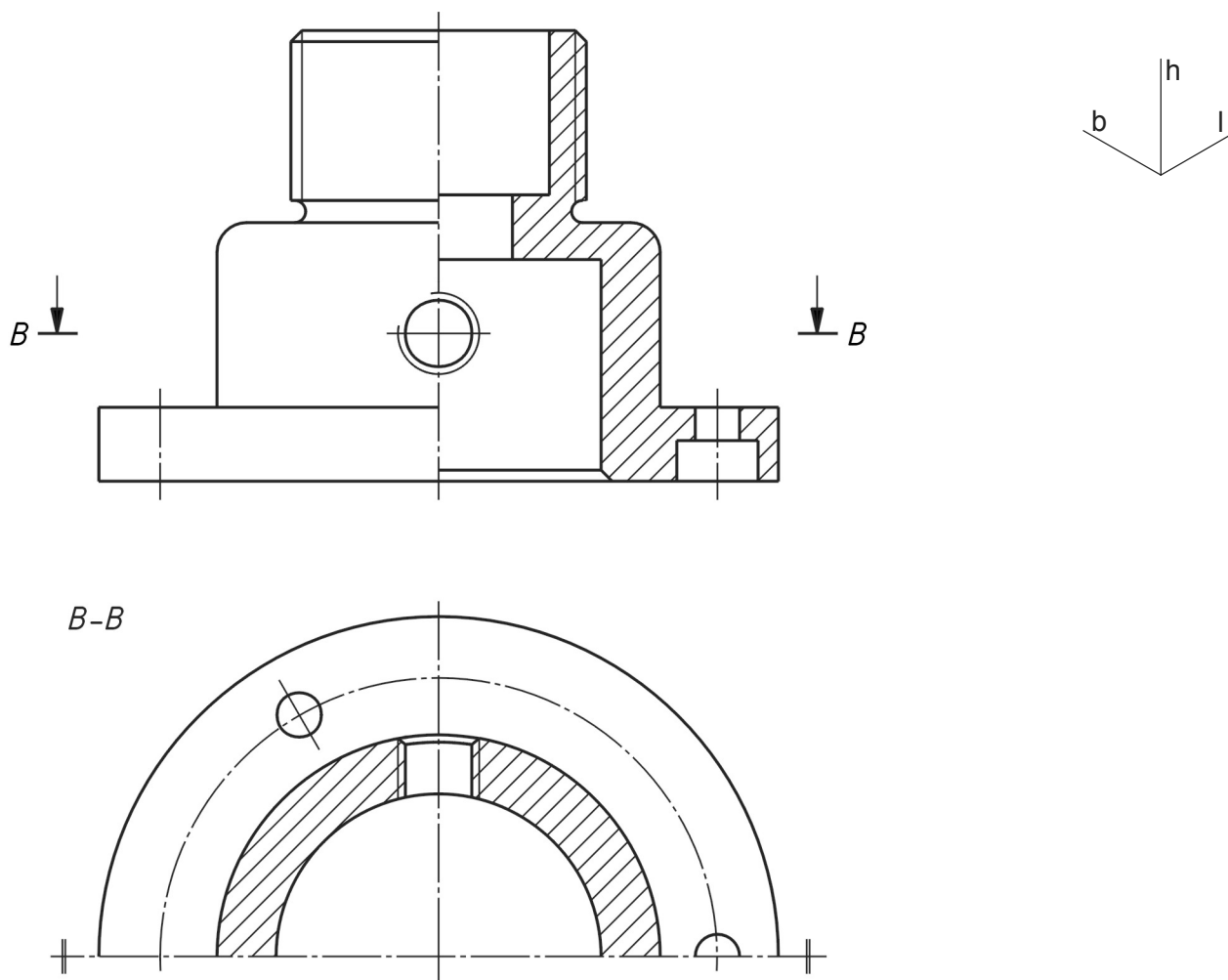
3. Strojni dio prikazan projekcijama $N_{pr1/2}$ i T u mjerilu M1:5 treba kotirati (mjeriti i upisati kotne brojeve na mjernice). Nacrtajte isti strojni dio u izometriji (samo u pogledu) prema danom planu dimenzija u približnom mjerilu M 1:5.



4. Kotirajte slijepim kotama (bez kotnih brojeva, ali navodeći oznake ϕ , R , M i sl.) vratilo, te unesite znakove obrade. Vanjski konus i prva cilindrična ploha s lijeve strane fino su obrađeni.



5. Strojni dio prikazan projekcijama $N_{pr1/2}$ i T_{pr} u mjerilu M1:2 treba kotirati (mjeriti i upisati kotne brojeve na mjernice). Nacrtajte isti strojni dio u izometriji (samo u pogledu) prema danom planu dimenzija u približnom mjerilu M 1:5.



6. Kotirajte slijepim kotama (bez kotnih brojeva, ali navodeći oznake ϕ , R , M i sl.) vratilo, te unesite znakove obrade. Vanjski konus i cilindrična ploha s utorom za pero fino su obrađeni.

